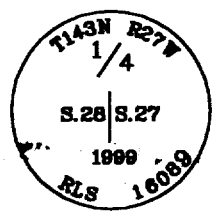
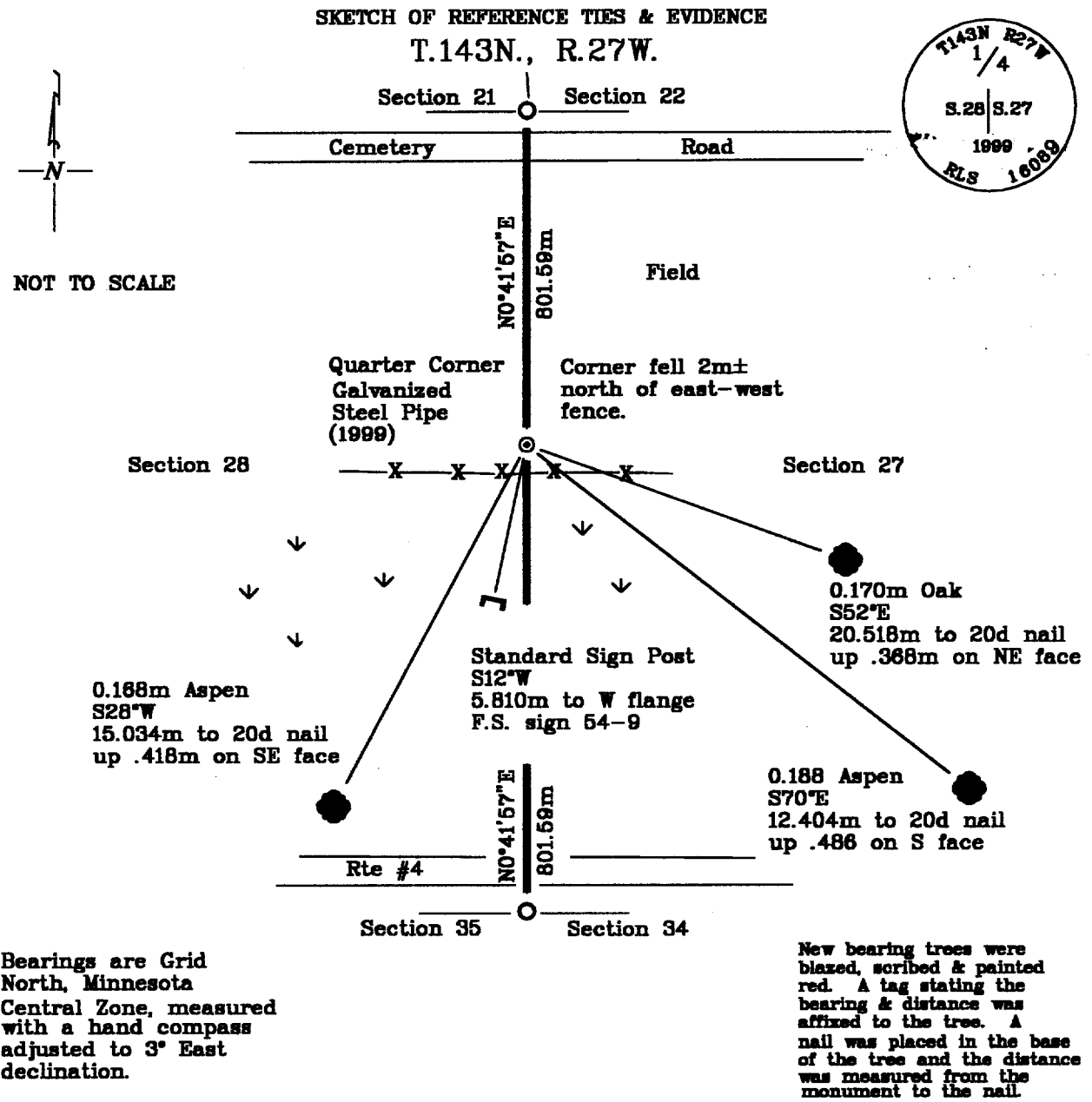


## CERTIFICATE OF LOCATION OF GOVERNMENT CORNER

East Quarter Corner, Section 28, Township 143 North, Range 27 West, of the Fifth Principal Meridian, Cass County, Minnesota.

January 13, 1999; Northern Lights Surveying and Mapping, Inc., (NLSM) monumented the Quarter Corner position with a 0.015m diameter, 0.610m long galvanized steel pipe, .220m below the surface, with a stamped brass cap. The corner was set "lost" between the NE and SE corners of section 28.



Statement of evidence relative to this corner location is on the back of this page

I hereby certify that this survey, plan, or report was prepared by me or under my direct supervision and that I am a duly Licensed Land Surveyor under the laws of the State of Minnesota.

*LaVerne Leuelling*      5-13-99  
 LaVerne Leuelling      Date  
 Licensed Land Surveyor No. 16089  
 NORTHERN LIGHTS SURVEYING & MAPPING, INC.

OFFICE OF THE COUNTY RECORDER 412857  
 County of Cass

I hereby certify that this document was filed in the Recorder's office.

Time: 12:20 P.M. Date: May 17, 1999  
 Recorder Claudine Kaylor  
 By K.F. Deputy  
 DOCUMENT NO. 412857

## Statement of Evidence

East Quarter Corner, Section 28, Township 143 North, Range 27 West, of the Fifth Principal Meridian, Cass County, Minnesota.

September, 1873; General Land Office (G.L.O.) survey notes; Deputy Surveyor William Allen set a wooden post for the quarter corner and referenced it with the following:

6" (0.152m) Aspen	7" (0.178m) Cedar
S47°W	N3°E
12 Links (2.414m)	9 Links (1.811m)

Edge of Cedar swamp was 10 chains to the south.

Said records are on file with the Secretary of State, St. Paul, Minnesota. Copies of these records are on file with the Cass County Surveyor's Office, Walker, Minnesota.

1969; United States Department of Agriculture - Forest Service (U.S.D.A.-F.S.) T.143N. R.27W. Field Book #1, p. 38; Curt Krause chained south from the section corner and found that the area had been sheared the previous year, for pasture. He found no evidence of the original post or references.

October 6, 1998; Northern Lights Surveying and Mapping, Inc., (NLSM) established initial control, and search, no conclusive evidence was found at this time.

December 2, 1998; NLSM crew of Foster and Brunner returned to GPS point and pulled to a calculated "Lost" quarter corner position and searched for evidence. Both BT's fell in, or on the edge of a farm field and the "Lost" position fell in the field  $\pm$  2m north of old fence line. A check was made to the cedar swamp call 10 chains south. The area to the south has been logged and is low lying, but no evidence of cedar was found. No conclusive evidence was found at the "Lost" Quarter Corner position either. Additional GPS was then established for a backsight the following day.

January 13, 1999; NLSM crew of Heinle and Carlson monumented the quarter corner position with a 0.015m diameter, 0.610m long galvanized steel pipe with a brass cap, and established the following references:

0.188 Aspen	0.170m Oak
S70°E	S52°E
12.404m to 20d nail	20.518m to 20d nail
up .486 on South face	up .368m on Northeast face
0.168m Aspen	Standard Sign Post
S28°W	S12°W
15.034m to 20d nail	5.810m to West flange
up .418m on Southeast face	F.S. sign 54-9

Northern Lights Surveying and Mapping, Inc., Boy River Township Field Book #3, p. 42.

## Coordinates:

## Cass County North

Northing = 71868.428 meters  
Easting = 161706.118 meters

State Plane Coordinate System  
Minnesota Central Zone  
NAD 83

Northing = 341858.101 meters  
Easting = 811832.539 meters

Latitude = 47°10'26.46488" North  
Longitude = 94°05'38.11319" West