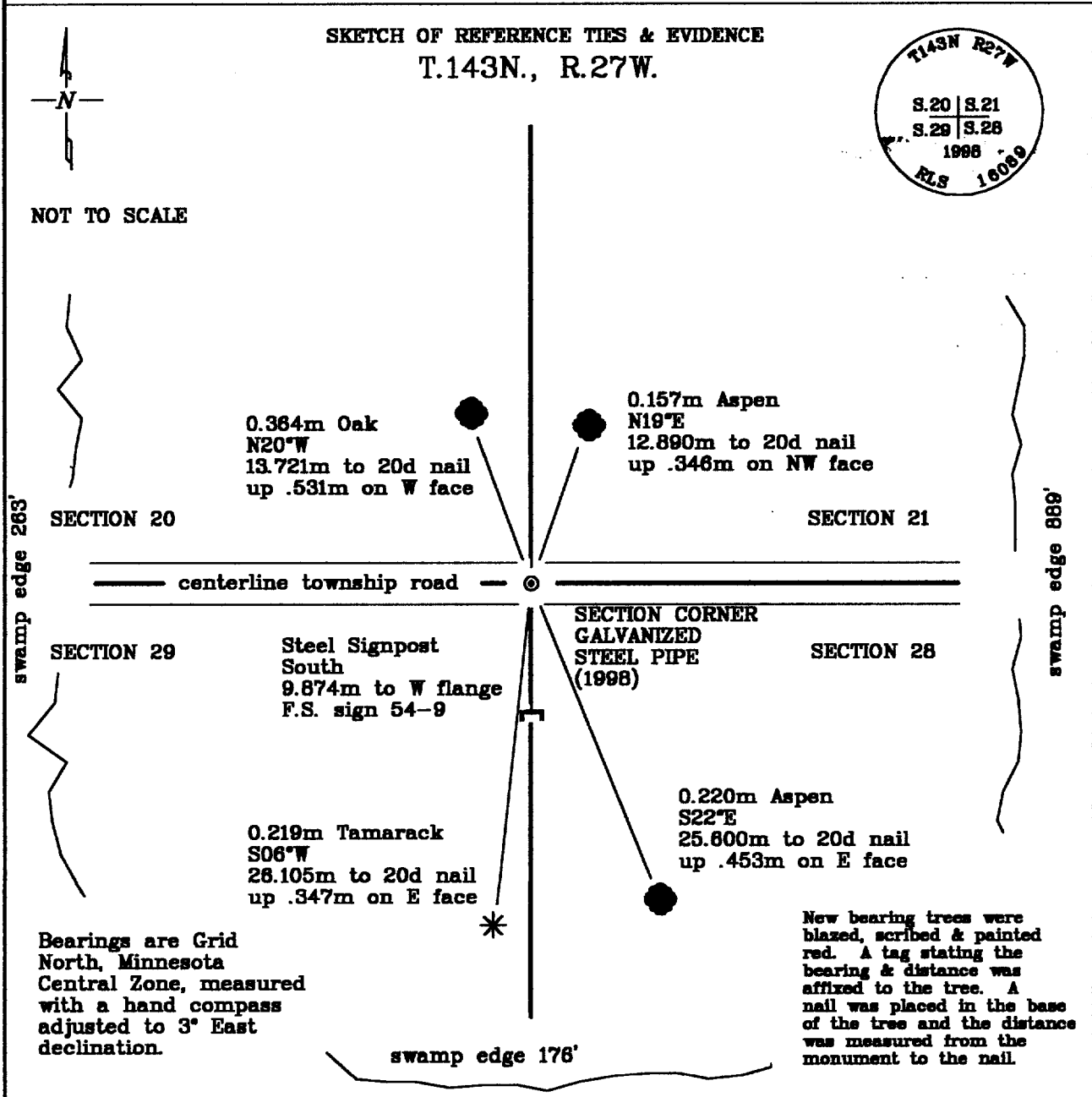


CERTIFICATE OF LOCATION OF GOVERNMENT CORNER

Northeast Corner, Section 29, Township 143 North, Range 27 West, of the Fifth Principal Meridian, Cass County, Minnesota.

December 15, 1998; Northern Lights Surveying and Mapping, Inc., (NLSM) set a galvanized steel pipe as a perpetuation of the original General Land Office (G.L.O.) section corner. The corner was based on the findings of a road survey done by John Curo, and a plat laid out from this corner.



Statement of evidence relative to this corner location is on the back of this page

I hereby certify that this survey, plan, or report was prepared by me or under my direct supervision and that I am a duly Licensed Land Surveyor under the laws of the State of Minnesota.

LaVerde Leuelling 5-13-99
LaVerde Leuelling Date

Licensed Land Surveyor No. 18089
NORTHERN LIGHTS SURVEYING & MAPPING, INC.

OFFICE OF THE COUNTY RECORDER 412852
County of Cass

I hereby certify that this document was filed in the Recorder's office.

Time: 11:55 A.M. Date: May 12, 1999
Recorder Claudine Kayler

By K. J. Deputy
DOCUMENT NO. 412852

Statement of Evidence

Page 2 of 3

North Quarter Corner, Section 22, Township 143 North, Range 27 West, of the Fifth Principal Meridian, Cass County, Minnesota.

September 1873; G.L.O. Deputy Surveyor William Allen set a wood post and referenced it with the following:

8"(0.203m) Tamarack S48°W 31 Links (8.236m)	10"(0.254m) Fir S43°E 49 Links (9.857m)	5"(0.127m) Norway Pine N42°E 25 Links (5.029m)
7"(0.178m) Tamarack N42°W 15 Links (3.018m)		

Said records are on file with the Secretary of State, St. Paul, Minnesota; copies of these records are on file with the Cass County Surveyor's Office, Walker, Minnesota.

June 15, 1916; Cass County Surveyor John Curo found a Tamarack stump about 7" with a southwest bearing.

1969; United States Department of Agriculture—Forest Service T148N R27W Field Book #1, p. 56; Curt Krause chained to the area from the quarter corner to the west. It fell at the end of a fence line running south and searched, but found no evidence of the corner or references.

September 2, 1998; Northern Lights Surveying and Mapping, Inc., used GPS to gain control in the area. There was a Forest Service location tag by Curt Krause 1969, no other evidence was found.

November 1998; NLSM crew of Leuelling and Heinle checked swamp calls to try and determine corner position, they were as follows:

South 2.5 chains to swamp edge (165')
NLSM distance: 176'
East 14.0 Chains to swamp edge (924')
NLSM distance: 889'
West 3.8 chains to swamp edge (250.8')
NLSM distance: 263'

December 15, 1998; NLSM set a 0.015m diameter galvanized steel pipe, 0.610m long, with a brass cap for the section corner. It was buried in the centerline below the surface, and the following references were established:

0.364m Oak N20°W 13.721m to 20d nail up .531m on W face	0.157m Aspen N19°E 12.890m to 20d nail up .348m on NW face	0.219m Tamarack S06°W 28.105m to 20d nail up .347m on E face
0.220m Aspen S22°E 25.600m to 20d nail up .453m on E face	Steel Signpost South 9.874m to W flange F.S. sign 54-9	

Also placed nail ties at: 3' West and 3' South

Northern Lights Surveying and Mapping, Inc., Boy River Township Field Book #2, p. 76.

Coordinates:

Cass County North

Northing = 72470.464 meters
Easting = 160100.172 meters

State Plane Coordinate System
Minnesota Central Zone
NAD 83

Northing = 342459.465 meters
Easting = 810226.321 meters

Latitude = 47°10'52.50883" North
Longitude = 94°06'54.32201" West