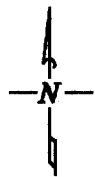


CERTIFICATE OF LOCATION OF GOVERNMENT CORNER

North Quarter Corner, Section 24, Township 143 North, Range 27 West, of the Fifth Principal Meridian, Cass County, Minnesota.

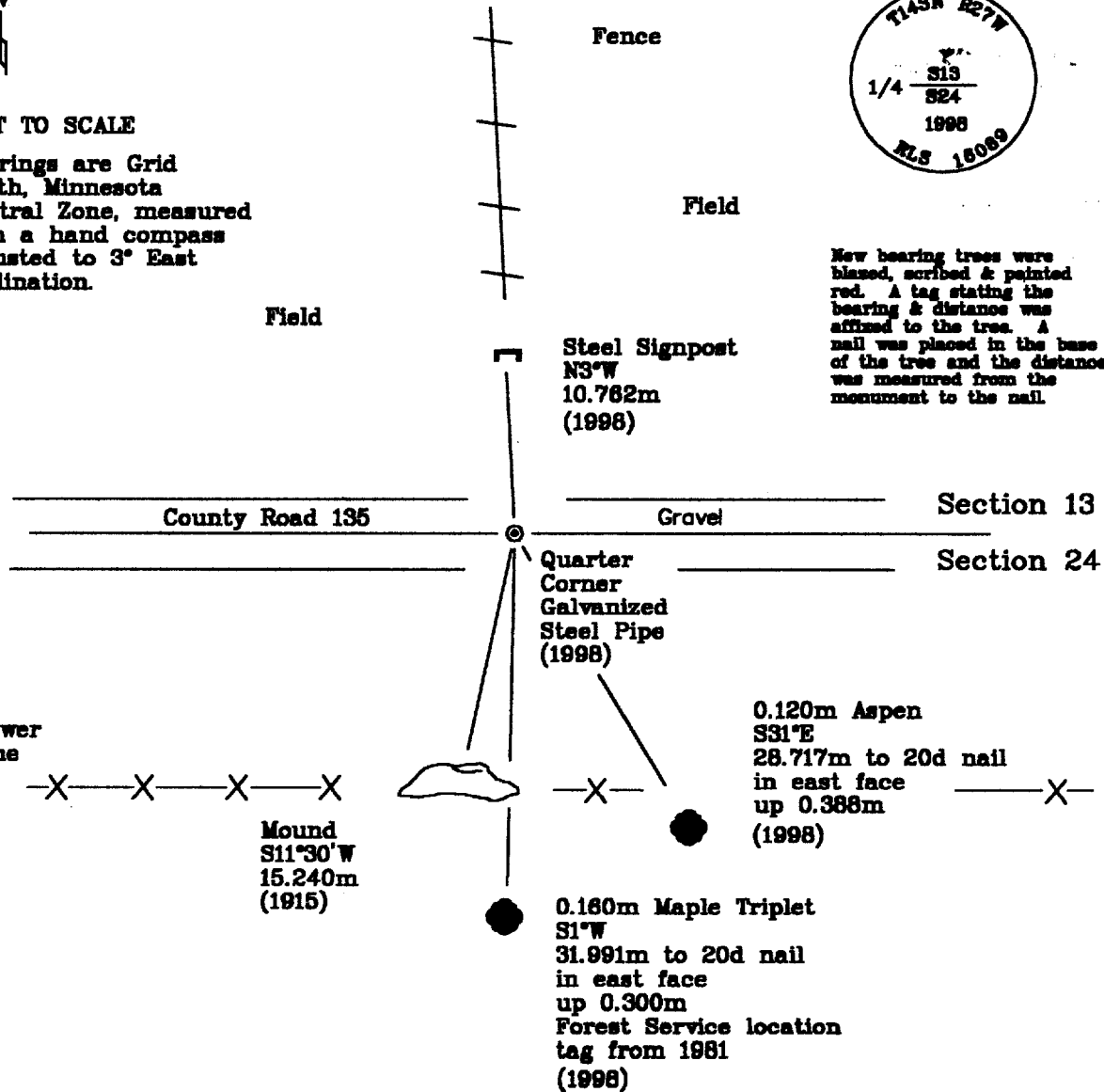
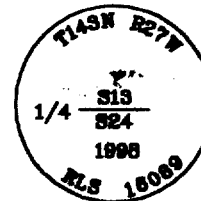
October, 1998, Northern Lights Surveying and Mapping Inc. set a brass capped pipe to perpetuate the original General Land Office (G.L.O.) monument as maintained through an extensive chain of Cass County and United States Department of Agriculture - Forest Service (U.S.D.A.-F.S.) surveys.

SKETCH OF REFERENCE TIES & EVIDENCE T.143N., R.27W.



NOT TO SCALE

Bearings are Grid North, Minnesota Central Zone, measured with a hand compass adjusted to 3° East declination.



New bearing trees were blazed, scribed & painted red. A tag stating the bearing & distance was affixed to the tree. A nail was placed in the base of the tree and the distance was measured from the monument to the nail.

Statement of evidence relative to this corner location is on the back of this page

I hereby certify that this survey, plan, or report was prepared by me or under my direct supervision and that I am a duly Licensed Land Surveyor under the laws of the State of Minnesota.

Verne Leuelling 5-13-99
Date

Licensed Land Surveyor No. 18089
NORTHERN LIGHTS SURVEYING & MAPPING, INC.

OFFICE OF THE COUNTY RECORDER 412848
County of Cass

I hereby certify that this document was filed in the Recorder's office.

Time: 11:35 A.M. Date: May 12, 1999
Recorder Claudine Kaylor

By K. J. Deputy
DOCUMENT NO. 412848

Statement of Evidence

Page 2 of 3

North Quarter Corner, Section 24, Township 143 North, Range 27 West, of the Fifth Principal Meridian, Cass County, Minnesota.

September, 1873; General Land Office (G.L.O.) survey notes; Deputy Surveyor William Allen set a wooden post for the quarter corner and referenced it with the following:

7" (0.178m) Balm of Gilead	5" (0.127m) Fir
S35°E	N4°E
8 Links (1.609m)	7 Links (1.408m)

Said records are on file with the Secretary of State, St. Paul, Minnesota; copies of these records are on file with the Cass County Surveyor's Office, Walker, Minnesota.

1910-1915; Cass County Road Survey by George Ralph Book "B", p.97, Survey Record #260; he found an old post, but no references. He established the following new references:

4" (0.102m) Pine	15" (0.381m) Poplar
S11°30'W	N4°W
50 Feet (15.240m)	39.5 Feet (12.040m)
Nail in tree	Falls in plowed field
under Rural	
Electric Association line	

He showed the distance to two section corners (east and west) as being 2640 feet (804.674m).

1915; Book "B", p.455 and 456; John Curo LS#1428, found a corner set by the state engineer and the following reference:

16" (0.408m) Aspen
N3°05'W
39.60 Feet (12.070m)

1925; Cass County Land Corner Record; during a survey for State Road #45, the county highway department searched for and found an "approximate" corner.

1935; United States Department of Agriculture - Forest Service (U.S.D.A.-F.S.) Form 874-9; A.H. Jager found a badly burned pine stump as evidence of the location of the corner. He placed a metal location poster on a 3" (0.076m) Aspen S5°W, .45 chains (9.053m) away.

November, 1935; J.A. Gjelhaug LS# 1337 also found an original corner at the north quarter of Section 24. He computed the bearing and distance to the northeast corner of Section 24 as N88°30'E, 2629.44 feet (801.456m) and the bearing and distance to the northwest corner of the section as S88°20'W, 2640 feet (804.674m).

October, 1998; Northern Lights Surveying and Mapping, Inc. crew of Leuelling and Heinle set a 0.015m diameter galvanized steel pipe, 0.610m long, with stamping, in the centerline of County Road #135. The cap is 0.250m below the surface of the road.

The corner was set at the intersection of the road centerline and the extension of a north-south fence to the north. The position was checked to a stump mound at S11°30'W, 15.24m. Remnants of pine were found but the location was disturbed by a power company clearing. The position fits the Gjelhaug survey within a meter, and with the 1910-1915 road survey within 7.500m (over 5 miles of survey).

The crew established the following new references:

Steel Signpost	0.120m Aspen	0.160m Maple Triplet
N3°W	S31°E	S1°W
10.762m	28.717m to 20d nail	31.991m to 20d nail
	in east face	in east face
	up 0.388m	up 0.300m
		Forest Service location
		tag from 1981

Northern Lights Surveying and Mapping, Inc. Boy River Township Field Book #2, p. 40.

Statement of Evidence

Page 3 of 3

North Quarter Corner, Section 24, Township 143 North, Range 27 West, of the Fifth Principal Meridian, Cass County, Minnesota.

Coordinates:

Cass County North

Northing = 74204.701 meters
Easting = 165753.262 meters

State Plane Coordinate System
Minnesota Central Zone
NAD 83

Northing = 344195.903 meters
Easting = 815878.557 meters

Latitude = 47°11'48.33736" North
Longitude = 94°02'25.66380" West