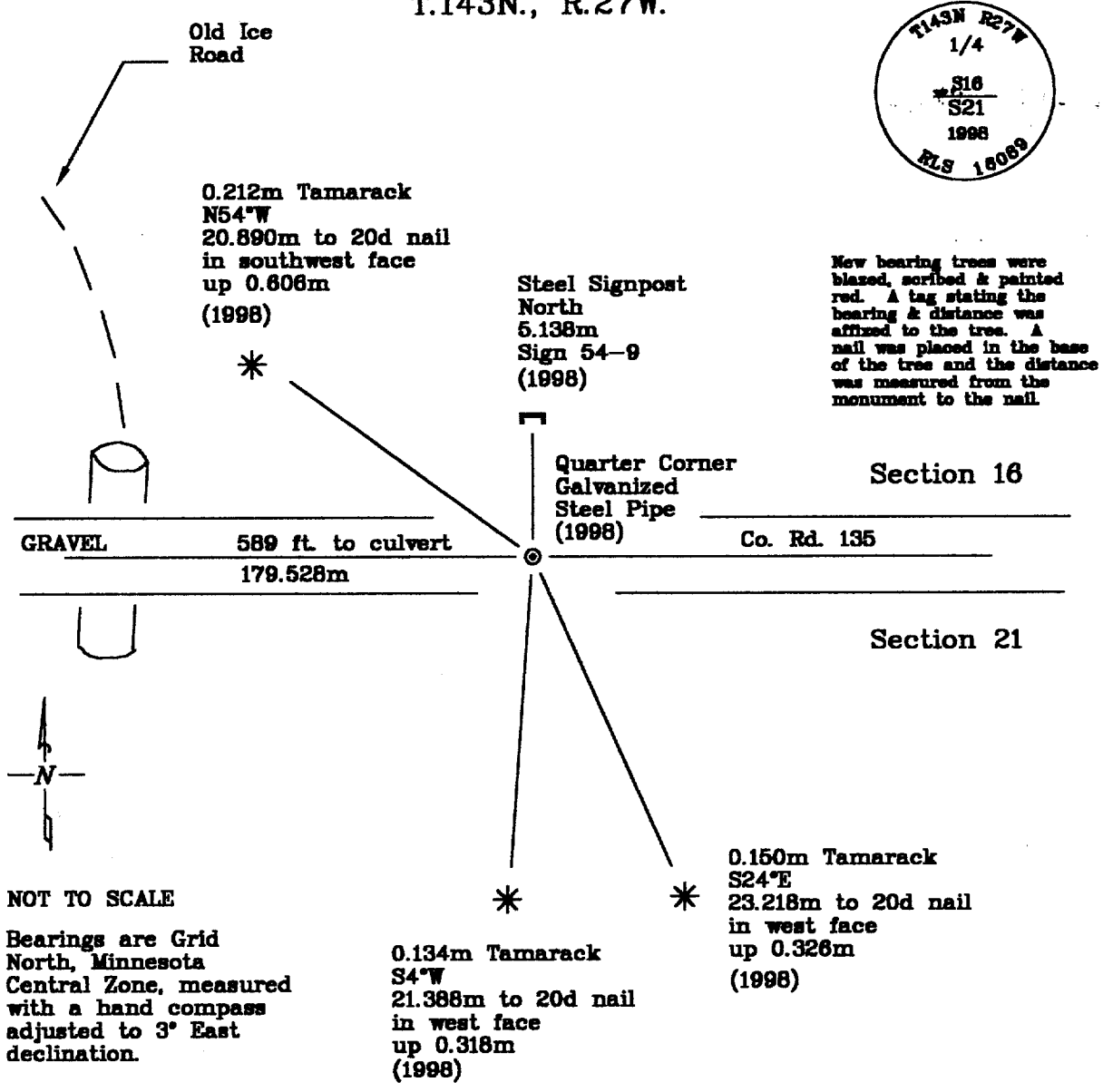


CERTIFICATE OF LOCATION OF GOVERNMENT CORNER

North Quarter Corner, Section 21, Township 143 North, Range 27 West, of the Fifth Principal Meridian, Cass County, Minnesota.

November, 1998; Northern Lights Surveying and Mapping, Inc. monumented the position as a perpetuation of the original General Land Office (G.L.O.) 1873 survey. This was accomplished by setting the corner in the place indicated by the Cass County Highway Department which maintained the corner between 1910 and 1925.

SKETCH OF REFERENCE TIES & EVIDENCE
T.143N., R.27W.



Statement of evidence relative to this corner location is on the back of this page

I hereby certify that this survey, plan, or report was prepared by me or under my direct supervision and that I am a duly Licensed Land Surveyor under the laws of the State of Minnesota.

LaVerne Leuelling
LaVerne Leuelling Date 5-13-99
Licensed Land Surveyor No. 16089
NORTHERN LIGHTS SURVEYING & MAPPING, INC.

OFFICE OF THE COUNTY RECORDER 412844
County of Cass

I hereby certify that this document was filed in the Recorder's office.

Time: 11:15 A.M. Date: May 12, 1999
Recorder Claudine Taylor
By K. J. Deputy
DOCUMENT NO. 412844

Statement of Evidence

North Quarter Corner, Section 21, Township 143 North, Range 27 West, of the Fifth Principal Meridian, Cass County, Minnesota.

1873; General Land Office (G.L.O.) survey notes; Deputy Surveyor William Allen set a wooden post for the quarter corner and referenced it with the following:

5" (0.127m) Tamarack S32°E 14 Links (2.816m)	5" (0.127m) Tamarack N21°W 27 Links (5.432m)
--	--

Said records are on file with the Secretary of State, St. Paul, Minnesota; copies of these records are on file with the Cass County Surveyor's Office, Walker, Minnesota.

1910-1915; Cass County road survey by George Ralph recorded in Book B, p. 97, survey record #260; notes indicate that no post was found, but one original G.L.O. reference was found:

5" (0.127m) Tamarack
Northwest
17 Feet (5.182m)

He established the following new references:

4" (0.102m) Tamarack S52°30'W 56.2 Feet (17.130m)	5" (0.127m) Tamarack N31°30'W 49.0 Feet (14.935m)
---	---

1925; Cass County Land Corner Record; during a survey for State Road #5, Cass County Highway Department found the following references:

4" (0.102m) Tamarack Stump Southwest 56.2 Feet (17.130m)	3" (0.076m) Tamarack South 69.6 Feet (21.214m)
--	--

They also noted that a culvert lay 589 feet (179.528m) west of the corner, and that the corner lay in the centerline of the road.

November, 1998; Northern Lights Surveying and Mapping, Inc. crew of Heinle and Miro monumented the quarter corner position with a 0.015m diameter, 0.610m long galvanized steel pipe with a brass cap, and established the following references:

0.212m Tamarack N54°W 20.890m to 20d nail in southwest face up 0.606m	0.134m Tamarack S4°W 21.388m to 20d nail in west face up 0.318m
---	---

The corner was set in the center of Co. Rd. 135 and 179.527m east of the culvert, which drained an old ice road.

Northern Lights Surveying and Mapping, Inc., Boy River Township Field Book #2, p. 21.

Coordinates:

Cass County North

Northing = 74092.889 meters
Easting = 160873.370 meters

State Plane Coordinate System
Minnesota Central Zone
NAD 83

Northing = 344081.955 meters
Easting = 810998.842 meters

Latitude = 47°11'45.00147" North
Longitude = 94°06'17.49160" West