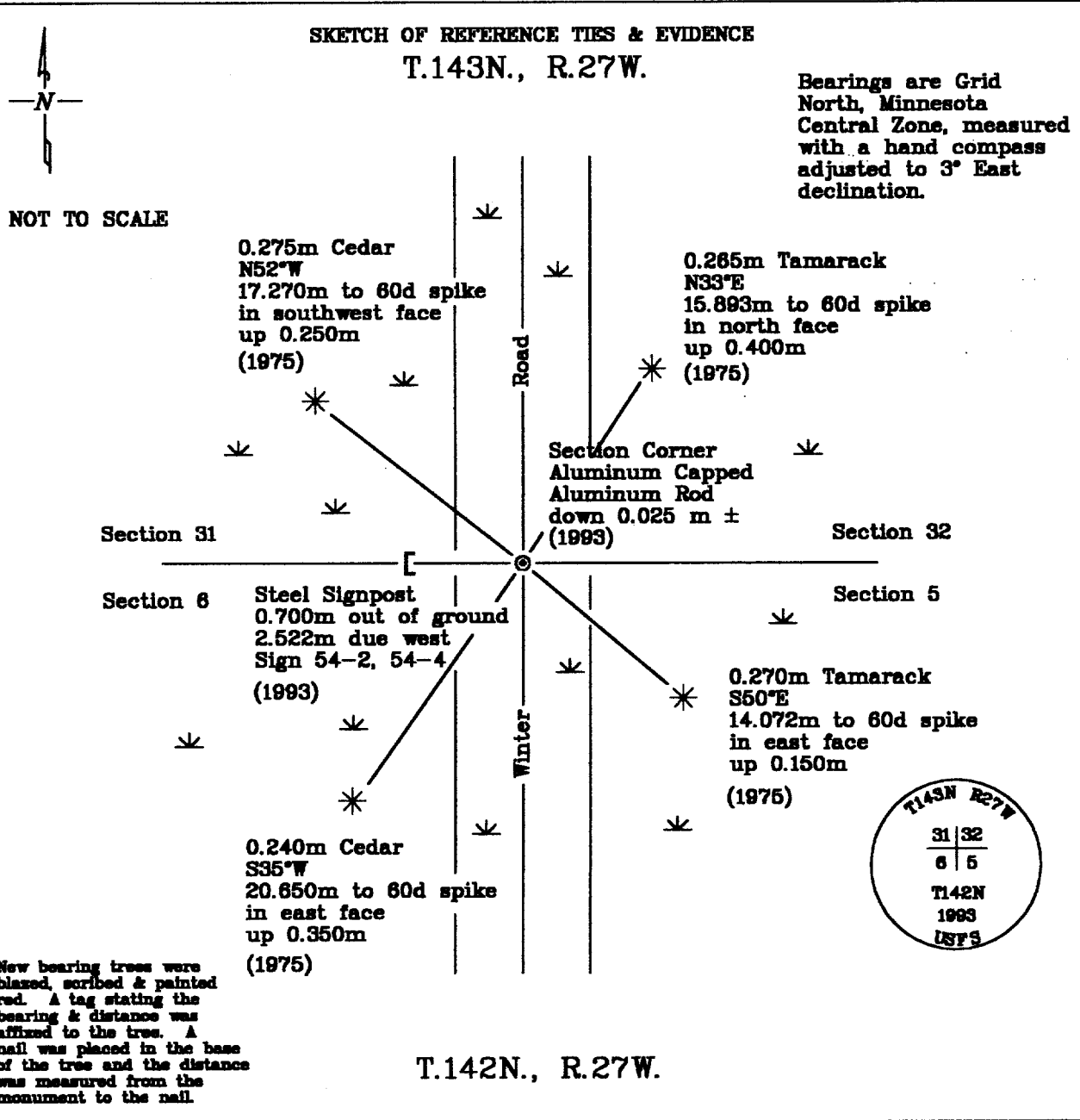


CERTIFICATE OF LOCATION OF GOVERNMENT CORNER

Northeast Corner, Section 6, Township 142 North, Range 27 West, of the Fifth Principal Meridian, Cass County, Minnesota.

August 18, 1998, Northern Lights Surveying and Mapping, Inc. found, maintained and accepted the 1993 United States Department of Agriculture - Forest Service (U.S.D.A.-F.S.) monument as a perpetuation of the original General Land Office (G.L.O.) section corner.



New bearing trees were blazed, scribed & painted red. A tag stating the bearing & distance was affixed to the trees. A nail was placed in the base of the tree and the distance was measured from the monument to the nail.

Statement of evidence relative to this corner location is on the back of this page

I hereby certify that this survey, plan, or report was prepared by me or under my direct supervision and that I am a duly licensed Land Surveyor under the laws of the State of Minnesota.

Joseph Foster 4-28-99
Joseph Foster Date
Licensed Land Surveyor No. 25345
NORTHERN LIGHTS SURVEYING & MAPPING, INC.

OFFICE OF THE COUNTY RECORDER 412422
County of Cass

I hereby certify that this document was filed in the Recorder's office.

Time: 10:00 A.M. Date: 5-5-99
Recorder Claudine Kaylor
By K.F. Deputy
DOCUMENT NO. 412422

Statement of Evidence

Page 2 of 3

Northeast Corner, Section 6, Township 142 North, Range 27 West, of the Fifth Principal Meridian, Cass County, Minnesota.

1873; General Land Office (G.L.O.) survey notes; Deputy Surveyor P.H. Conger set a wooden post for the section corner and referenced it with the following:

6" (0.152m) Tamarack S15°W 8 Links (1.207m)	8" (0.203m) Tamarack S57°E 8 Links (1.609m)	8" (0.203m) Tamarack N37.5°E 8 Links (1.609m)	5" (0.127m) Tamarack N38°W 8 Links (1.207m)
---	---	---	--

Said records are on file with the Secretary of State, St. Paul, Minnesota; copies of these records are on file with the Cass County Surveyor's Office, Walker, Minnesota.

1903-1904; United States Army Corps of Engineers Survey drawing of the Leech Lake Reservoir, including Section 33, T143N, R27W, labels the corner as a "known Section corner". No reference is made to the corner in field notes of record.

Said records are on file with the National Archives Regional Office, Chicago, Illinois.

1920; G.L.O. survey notes; the crew found a decayed unmarked wood stake and the original NE BT, a 12" (0.305m) diameter tamarack bearing N37.5°E, 8 lks. (1.609m) with scribe visible. They then set a 2" (0.051m) diameter, 36" (0.914m) long brass capped iron post for the corner and referenced it with:

6" (0.152m) Cedar N76.75°E 88 Links (17.709m)	14" (0.356m) Dead Tamarack S25°E 89 Links (13.861m)	8" (0.203m) Cedar S71.25°W 88 Links (17.709m)	8" (0.203m) Tamarack N30°W 75 Links (15.088m)
---	---	---	---

Said records are on file with the Secretary of State, St. Paul, Minnesota; copies of these records are on file with the Cass County Surveyor's Office, Walker, Minnesota.

May, 1975; United States Department of Agriculture - Forest Service (U.S.D.A.-F.S.) T.143N. R.27W. Corner Restoration Book #2, p. 26; Curt Krause found the 1920 GLO monument in good condition and the 1920 ties in various states of decay. He then established the following new references:

8" (0.229m) Tamarack N33°E 52.0 Feet (15.850m) Scribed S32BT	7" (0.178m) Tamarack S50°E 46.1 Feet (14.051m) Scribed S5BT	8" (0.203m) Cedar S35°W 67.6 Feet (20.605m) Scribed S6BT	8" (0.203m) Cedar N52°W 56.4 Feet (17.19m) Scribed S31BT
---	--	---	---

Steel Signpost
West
3.0 Feet (0.914m)
Sign 54-2, 54-4

September, 1975; Certificate of Location of Government Corner (Doc.# 223553) filed in May 1975 by William Okerman RLS No. 6807 with Cass County Recorder's Office, Walker, Minnesota cites the above 1975 information.

March, 1993; U.S.D.A.-F.S. T.143N. R.27W. Corner Restoration Book #2; p. 26; R. Main found the section corner had been removed during construction of a logging road. He set a 3/4" (0.019m) x 10' (33.808m) aluminum rod with a 3" (0.076m) diameter aluminum cap approximately 1" (0.025m) below a winter haul road and referenced it with:

13" (0.332m) Tamarack N33°E 52.0 Feet (15.850m) (1975)	12" (0.305m) Tamarack S50°E 46.1 Feet (14.051m) (1975)	11" (0.279m) Cedar S35°W 67.6 Feet (20.605m) (1975)	11" (0.279m) Cedar N52°W 56.4 Feet (17.191m) (1975)
---	---	--	--

August 18, 1998; Northern Lights Surveying and Mapping, Inc. crew member Matt Brunner found the 1993 U.S.D.A.-F.S. monument and the following accessories:

0.265m Tamarack N33°E 15.893m from 60d spike in north face up 0.400m (1975)	0.270m Tamarack S50°E 14.072m to 60d spike in east face up 0.150m (1975)	0.240m Cedar S35°W 20.650m to 60p spike in east face up 0.350m (1975)	0.275m Cedar N52°W 17.270m to 60d spike in southwest face up 0.250m (1975)
--	---	--	---

Statement of Evidence

Page 3 of 3

Northeast Corner, Section 8, Township 142 North, Range 27 West, of the Fifth Principal Meridian, Cass County, Minnesota.

Steel Signpost
0.700m out of ground
2.522m due west
Sign 54-2, 54-4
(1993)

He maintained the corner and GPS'd its position for control purposes.

Northern Lights Surveying and Mapping, Inc. Boy River Township Field Book #4, pp. 50-53.

Coordinates:

Cass County North

Northing = 69335.088 meters
Easting = 158480.175 meters

State Plane Coordinate System
Minnesota Central Zone
NAD 83

Northing = 339323.530 meters
Easting = 808587.853 meters

Latitude = 47°09'11".04816 North
Longitude = 94°08'12".35997 West