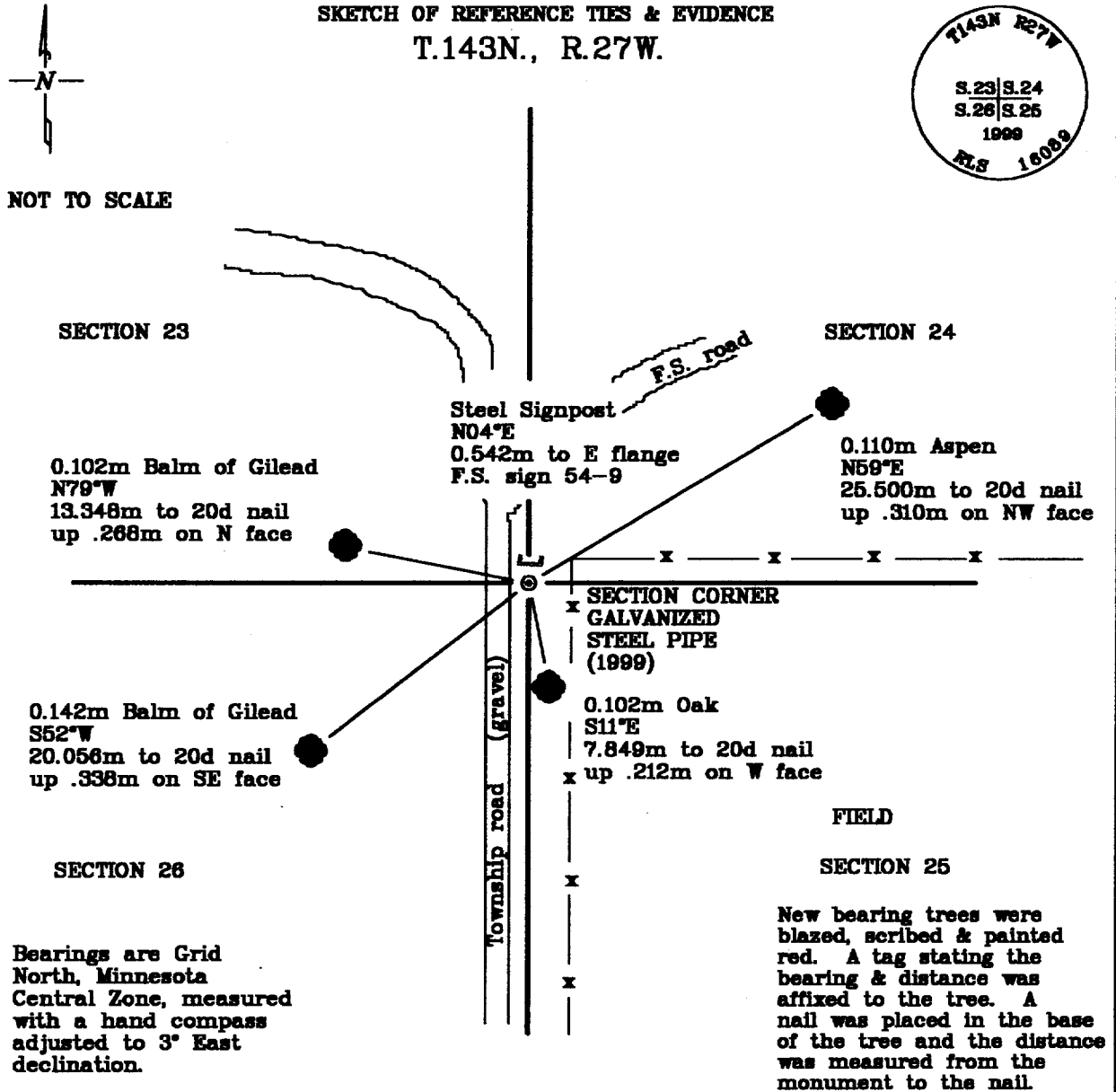


**CERTIFICATE OF LOCATION OF GOVERNMENT CORNER**

Northeast Corner Section 26, Township 143 North, Range 27 West, of the Fifth Principal Meridian, Cass County, Minnesota.

December 5, 1998; Northern Lights Surveying and Mapping, Inc., (NLSM) set a galvanized steel pipe for the corner position based on the 1915 survey by Donner and a testimony given by a local resident, Mr. Leonard Robbins, who had seen the government corner.



Statement of evidence relative to this corner location is on the back of this page

I hereby certify that this survey, plan, or report was prepared by me or under my direct supervision and that I am a duly Licensed Land Surveyor under the laws of the State of Minnesota.

*LaVerne Leuelling* 4-24-99  
 LaVerne Leuelling Date  
 Licensed Land Surveyor No. 16089  
 NORTHERN LIGHTS SURVEYING & MAPPING, INC.

OFFICE OF THE COUNTY RECORDER 412250  
 County of Cass

I hereby certify that this document was filed in the Recorder's office.

Time: 12:20 P.M. Date: 4-29-99  
 Recorder Claudine Kaylor  
 By K.S. Deputy  
 DOCUMENT NO. 412250

## Statement of Evidence

Page 2 of 3

Northeast Corner, Section 26, Township 143 North, Range 27 West, of the Fifth Principal Meridian, Cass County, Minnesota.

1873; General Land Office (G.L.O.) Deputy Surveyor William Allen set a wooden post and referenced:

6"(0.152m) Fir N47°E 9 Links (19.488m)	6"(0.152m) Fir S85°E 11 Links (23.819m)	7"(0.178m) Fir N33°W 14 Links (30.315m)
8"(0.203m) Fir S38°W 15 Links (32.480m)		

Said records are on file with the Secretary of State, St. Paul, Minnesota; copies of these records are on file with the Cass County Surveyor's office, Walker, Minnesota.

1915; Cass County engineer, T.A. Donner makes reference to an approximate corner position with a distance on his plat and his field notes. The position was near a logging camp. Book B, Record #328, p. 455-482.

November 1969; United States Department of Agriculture-Forest Service T.143N. R.27W. Field Book #1, p. 7; Curt Krause searched but could not find the corner.

October 1, 1998; Northern Lights Surveying and Mapping, Inc., received testimony from 87 year old local resident Leonard (Guy) Robbins for the location of the corner. He recalls seeing a 4" x 4" squared post sticking 8" above the ground when he was 15 years old (±circa 1927). The post was located east of the road which, at that time led to a mill pond pothole (now a swamp) near the NE corner of section 25. NLSM set a 60d spike at the location pointed out by Mr. Robbins. He stated that the corner he saw was within 5' of the spike.

December 5, 1998; NLSM crew set a brass capped, 0.015m diameter galvanized steel pipe, 0.610m long, flush with the ground, and near a field entrance for the section corner.

We have accepted Mr. Robbins' memory as the best evidence of the location of the original government corner. The following references were then established:

0.110m Aspen N59°E 25.500m to 20d nail up .310m on NW face	0.102m Balm of Gilead N79°W 13.348m to 20d nail up .268m on N face	0.142m Balm of Gilead S52°W 20.056m to 20d nail up .338m on SE face
0.102m Oak S11°E 7.849m to 20d nail up .212m on W face	Steel Signpost N04°E 0.542m to E flange F.S. sign 54-9	

Northern Lights Surveying and Mapping, Inc., Boy River Township Field Book #3, p.2 and Book #6, p.80.

## Coordinates:

## Cass County North

Northing = 72527.110 meters  
Easting = 164940.876 meters

State Plane Coordinate System  
Minnesota Central Zone

NAD 83

Northing = 342,518.041 meters  
Easting = 815,066.854 meters

Latitude = 47°10'54".07538 North  
Longitude = 94°3'4".42472 West