

CERTIFICATE OF LOCATION OF GOVERNMENT CORNER

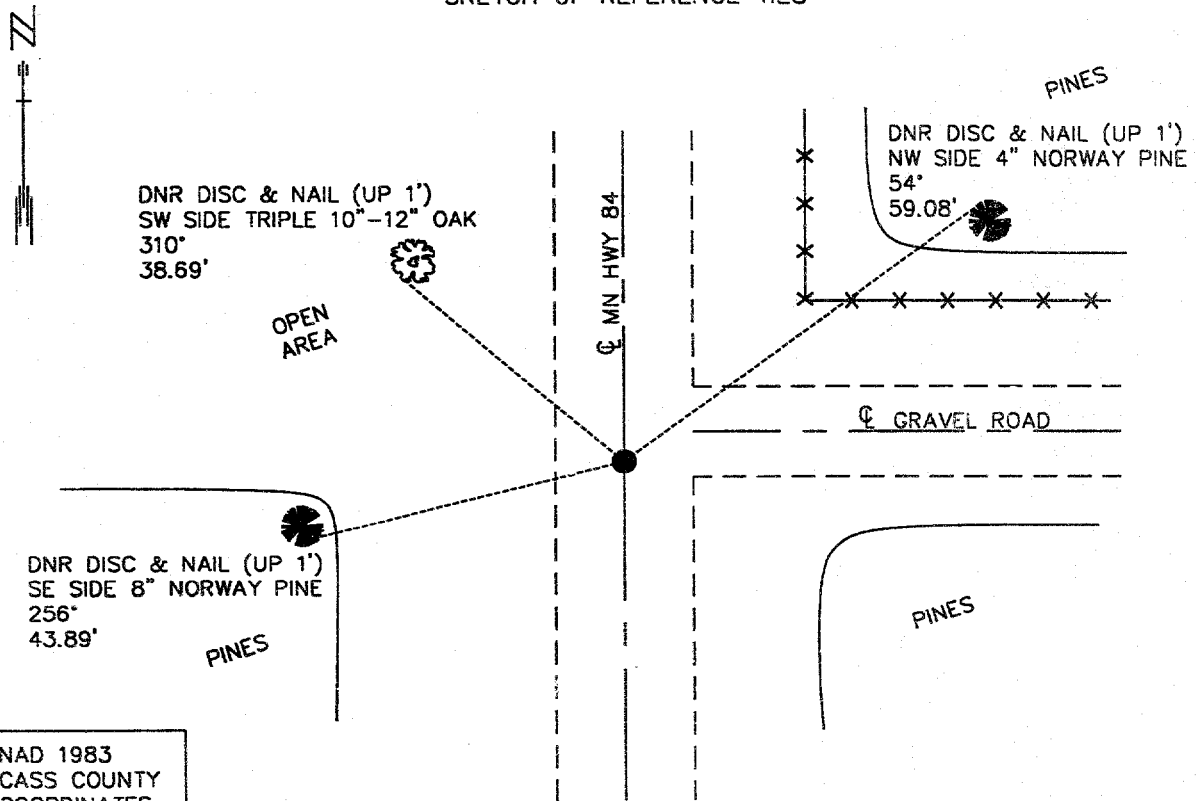
EAST QUARTER Corner of Section 29 , Township 138 N , Range 29 W , 5th P.M.

STATE OF MINNESOTA, County of CASS

At the corner location shown on the sketch:

- On 1-15-98 found a 3/4" INSIDE DIAMETER IRON PIPE (DOWN 0.3') IN CENTER LINE N-S ROAD
DATE AND 4' SOUTH OF CENTER LINE ROAD EAST.
- left monument as found, lowered monument, removed monument (explain)
- On DATE Placed a

SKETCH OF REFERENCE TIES



NAD 1983
CASS COUNTY
COORDINATES
N 313004.26
E 525404.39

NOT TO SCALE
AZIMUTHS OBSERVED WITH A COMPASS

Statement of evidence relative to this corner location is on back of page.

3-19-98
FOM01863

I hereby certify that this document and the data contained herein was prepared by me or under my direct supervision.

John D. Walker 4/30/98
SIGNATURE DATE

License Number 16098

- Land Surveyor, Professional Engineer
- County Surveyor, County Engineer

OFFICE OF THE COUNTY RECORDER 408860
County of Cass

I hereby certify that this document was filed in the Co. recorders office at 2:05 P.M. on the 14th day of January A.D., 1999

County Recorder Claudine Taylor
By R.F. , Deputy

DOCUMENT NO. 408860

East Quarter Corner Section 29, Township 138 North, Range 29 West

The Department of Natural Resources, Bureau of Engineering contacted the following offices for information regarding this corner:

MN Secretary of State
Cass County Surveyor
Widseth, Smith and Nolting of Brainerd
Landecker and Associates of Pequot Lakes
Landecker and Associates of Walker
Central Minnesota Surveying

1865 The US General Land Office field notes, on file in the Secretary of State's Office, show this corner to be marked with a post and the following bearing trees were marked:

N Pine 18" S 55° E 52 links (34.32')
N Pine 15" N 17 3/4° W 199 links (131.34')

1998 The DNR survey crew found a 3/4" inside diameter iron pipe down 0.3' in centerline of north-south MN Hwy 84 and 4' south of centerline of a gravel road east. The position of the monument was located using GPS equipment. The distances to the section corners north and south is 2656.87 feet.

For more information on our survey in this area please contact MN DNR, Bureau of Engineering, Survey Section, 1601 Minnesota Drive, Brainerd, MN 56425