

CERTIFICATE OF LOCATION OF GOVERNMENT CORNER

NORTH QUARTER Corner of Section 1, Township 134, Range 31, 5th P.M.

STATE OF MINNESOTA, County of CASS

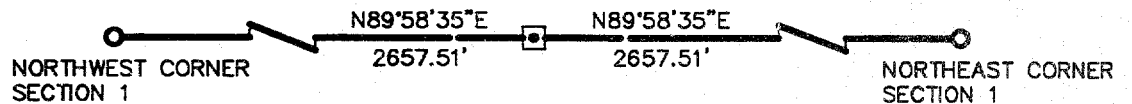
At the corner location shown on the sketch:

- On found a
DATE
- left monument as found, lowered monument, removed monument (explain)
- On APRIL 1996 Placed a 3/4" x 24" REBAR WITH ALUMINUM CAP STAMPED: "DNR SURVEY MARKER"
DATE
(UP 0.2') WITH STEEL FENCE POST ON SOUTH SIDE.

SKETCH OF REFERENCE TIES



NOTE:
MONUMENT IS ON EAST EDGE OF OPEN SWAMP
NO TIES AVAILABLE



NAD 1983
CASS COUNTY
COORDINATES
N 209398.46
E 484196.37

NOT TO SCALE

Statement of evidence relative to this corner location is on back of page.

MAY 1996
SFT99999

I hereby certify that this document and the data contained herein was prepared by me or under my direct supervision.

John W. Waller 3-3-97
SIGNATURE DATE

License Number 16098

- Land Surveyor, Professional Engineer
- County Surveyor, County Engineer

OFFICE OF THE COUNTY RECORDER

County of Cass

I hereby certify that this document was filed in the Co. recorders office at 1:20 P.M. on the 14th day of January A.D., 1999

County Recorder Claudine Kayler
By K.F., Deputy

DOCUMENT NO. 408851

408851

North Quarter Corner Section 1, Township 134 North, Range 31 West

The Department of Natural Resources, Bureau of Engineering contacted the following offices for information regarding this corner:

MN Secretary of State
Cass County Surveyor
Widseth, Smith and Nolting of Brainerd
Landecker and Associates of Pequot Lakes

1858 The U.S. General Land Office field notes, on file in the Secretary of State's Office, show this corner to be marked with a post and the following bearing trees are marked:

Wh. Birch 9" S 45°W 14 links (9.24')
Wh. Birch 6" N 67° W 5 links (3.30')

1996 The DNR survey crew searched for this corner with no success. There is no information since the original survey. A DNR Survey Marker was set at the lost location between the section corners east and west.

For more information on our survey in this area please contact MN DNR, Bureau of Engineering, Survey Section, 500 Lafayette Road, St. Paul, MN 55155-4029.