

# CERTIFICATE OF LOCATION OF GOVERNMENT CORNER

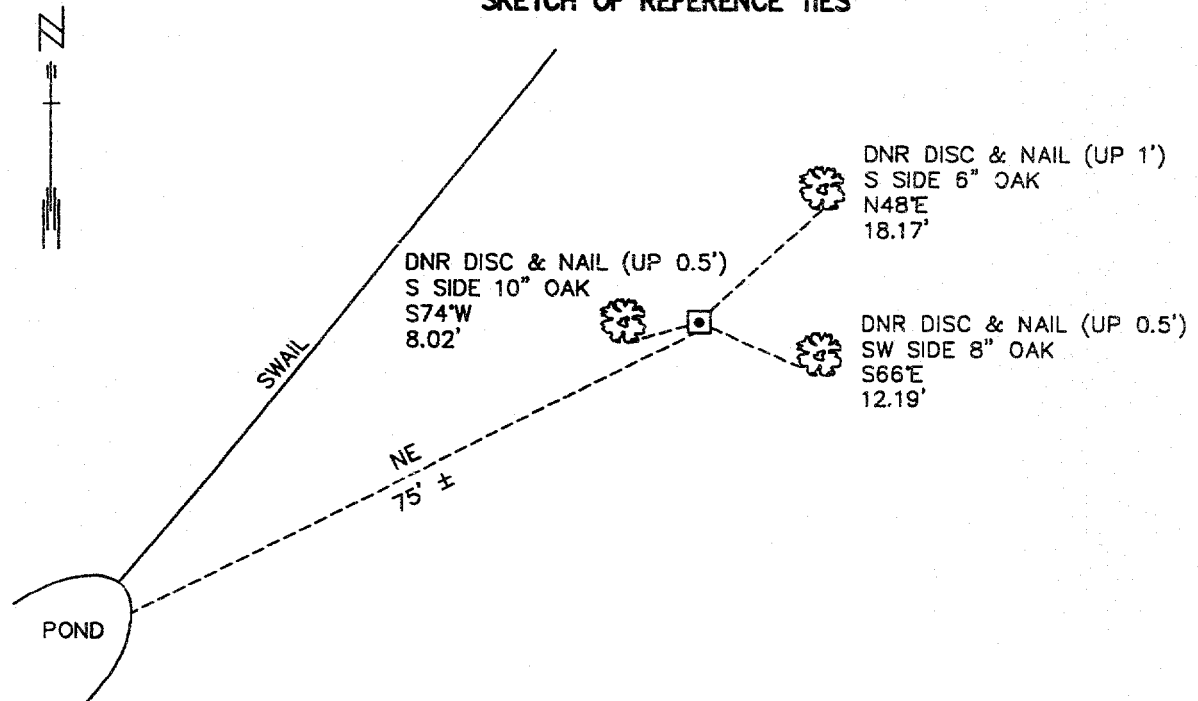
EAST QUARTER Corner of Section 36, Township 135, Range 31, 5th P.M.

STATE OF MINNESOTA, County of CASS

At the corner location shown on the sketch:

- On \_\_\_\_\_ found a \_\_\_\_\_  
DATE
- left monument as found,       lowered monument,       removed monument (explain)
- On 4-24-96 Placed a 3/4" x 24" REBAR WITH ALUMINUM CAP STAMPED: "DNR SURVEY MARKER"  
DATE  
(UP 0.2') AT TOE OF NW FACING SLOPE

### SKETCH OF REFERENCE TIES



NAD 1983  
CASS COUNTY  
COORDINATES  
N 212044.30  
E 486838.30

NOT TO SCALE  
BEARINGS OBSERVED WITH A COMPASS

Statement of evidence relative to this corner location is on back of page.

MAY 1996  
SFT99999

I hereby certify that this document and the data contained herein was prepared by me or under my direct supervision.

John D. Walder      3-3-97  
SIGNATURE      DATE

License Number 16098

- Land Surveyor,       Professional Engineer  
 County Surveyor,       County Engineer

OFFICE OF THE COUNTY RECORDER 408849

County of Cass

I hereby certify that this document was filed in the Co. recorders office at 1:10 P.M. on the 14th day of January, A.D., 1997

County Recorder Claudine Taylor

By K.F., Deputy

DOCUMENT NO. 408849

**East Quarter Corner Section 36, Township 135 North, Range 31 West**

The Department of Natural Resources, Bureau of Engineering contacted the following offices for information regarding this corner:

MN Secretary of State  
Cass County Surveyor  
Widseth, Smith and Nolting of Brainerd  
Landecker and Associates of Pequot Lakes

1858 The U.S. General Land Office field notes, on file in the Secretary of State's Office, show this corner to be marked with a post and the following bearing trees are marked:

Wh. Birch 6" S 72°W 16 links (10.56')

Wh. Birch 8" N 13° W 10 links (6.60')

1996 The DNR survey crew searched for this corner with no success. There is no information since the original survey. A DNR Survey Marker was set at the lost location between the section corners north and south.

For more information on our survey in this area please contact MN DNR, Bureau of Engineering, Survey Section, 500 Lafayette Road, St. Paul, MN 55155-4029.