

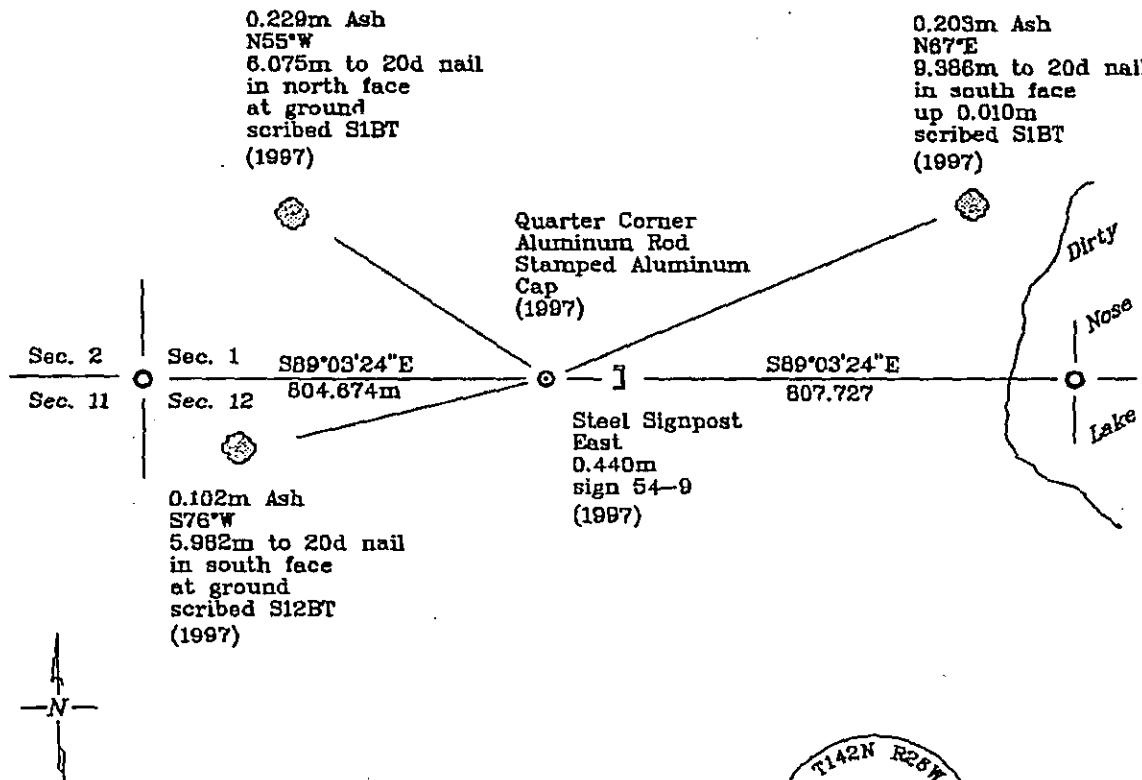
### CERTIFICATE OF LOCATION OF GOVERNMENT CORNER

Quarter Corner common to Sections 1 and 12, Township 142 North, Range 26 West, of the Fifth Principal Meridian, Cass County, Minnesota.

In July, 1997, Northern Lights Surveying and Mapping, Inc. set an aluminum capped aluminum rod on line between the Southwest corner of Section 1 and a theoretical Southeast corner of Section 1, at the General Land Office record distance.

#### SKETCH OF REFERENCE TIES & EVIDENCE

T.142N., R.26W.



NOT TO SCALE

Bearings are Grid North Minnesota Central Zone, measured with a hand compass adjusted to 3° East declination.

New bearing trees were blazed, scribed & painted red. A tag stating the bearing & distance was affixed to the tree. A nail was placed in the base of the tree and the distance was measured from the monument to the nail.



400498

Statement of evidence relative to this corner location is on the back of this page

I hereby certify that this survey, plan, or report was prepared by me or under my direct supervision and that I am a duly Licensed Land Surveyor under the laws of the State of Minnesota.

*LaVerne Leueling* 5-20-1998  
LaVerne Leueling Date

Registered Land Surveyor No. 16089  
NORTHERN LIGHTS SURVEYING & MAPPING

OFFICE OF THE COUNTY RECORDER  
County of Cass

I hereby certify that this document was filed in the Recorder's office.

Time: 1:35 P M. Date: June 1st, 1998  
Recorder Claudine Kaylor  
By K.S. Deputy  
DOCUMENT NO. 400498

## Statement of Evidence

Quarter Corner common to Sections 1 and 12, Township 142 North, Range 26 West, of the Fifth Principal Meridian, Cass County, Minnesota.

1872; General Land Office (G.L.O.) survey notes; Deputy Surveyor E.W. Griffin set a wooden post for the quarter corner and referenced it with the following:

8" Cedar (0.203m)	14" Cedar (0.356m)
N66°W	S43°W
21 Links (4.225m)	6 Links (1.207m)

Said records are on file with the Secretary of State, St. Paul, Minnesota; copies of these notes are on file with the Chippewa National Forest Supervisor's Office, Cass Lake, Minnesota.

April, 1963; United States Department of Agriculture-Forest Service (U.S.D.A.-F.S.) T.142N., R.26W. Field Book #1, p.5; U.S.D.A.-F.S. survey technician R.H. McDonald chained east from the meander corner common to Sections 2 and 11 89.52 chains (1398.523m), searched, but found no evidence of the original G.L.O. survey.

October, 1996; Mike Smith of Northern Lights Surveying and Mapping, Inc. cruised to a search area and established two Global Positioning System (G.P.S.) positions. Later in the same year, Smith and Foster returned to the area to search calculated positions, and mapped several stumps. A search was conducted, but no original G.L.O. evidence was found.

July, 1997; Northern Lights Surveying and Mapping, Inc. crew of Foster and Berg monumented the "lost" quarter corner position at record distance from the reestablished southwest corner of Section 1, and on line between the southwest corner and a theoretical southeast corner, as that line best represents the cardinal direction of the original G.L.O. surveyor. The crew established the following refernces:

0.203m Ash	0.102m Ash	0.229m Ash	Steel Signpost
N67°E	S76°W	N55°W	East
9.386m to 20d nail	5.982m to 20d nail	6.075m to 20d nail	0.440m
in south face	in south face	in north face	sign 54-9
up 0.010m	at ground	at ground	
scribed S1BT	scribed S12BT	scribed S1BT	

Northern Lights Surveying and Mapping, Inc. Slater Township Field Book #2, p. 18.

## Coordinates

## Cass County North

Northing = 62,679.935 meters  
Easting = 176,229.781 meters

State Plane Coordinates  
Minnesota Central Zone  
NAD 83

Northing = 332,875.583 meters  
Easting = 828,359.051 meters

Latitude = 47°05'34.10678" North  
Longitude = 93°54'10.17487" West