

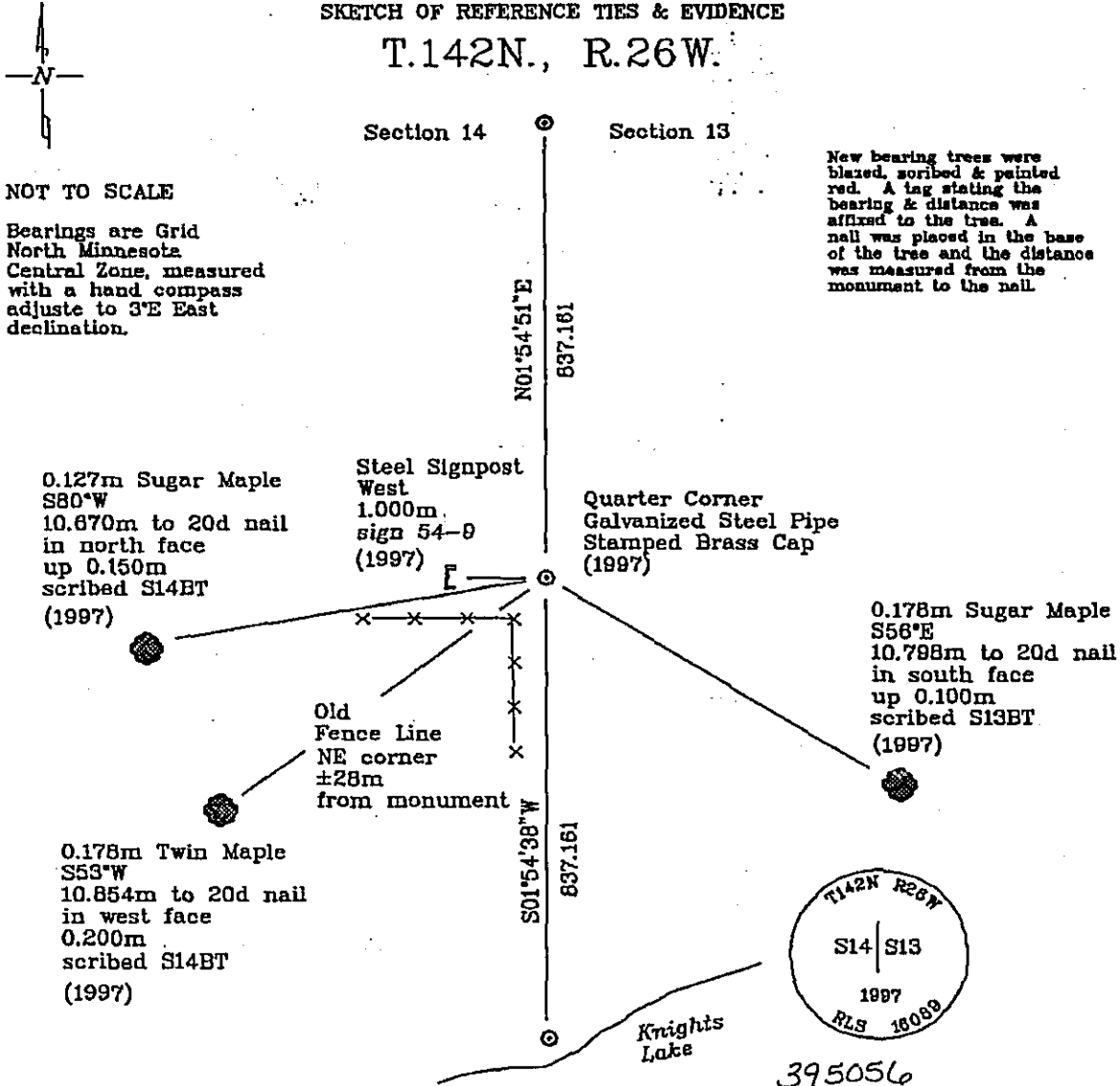
CERTIFICATE OF LOCATION OF GOVERNMENT CORNER

East Quarter Corner, Section 14, Township 142 North, Range 26 West, of the Fifth Principal Meridian, Cass County, Minnesota.

On June 19th, 1997, Northern Lights Surveying and Mapping, Inc. re-established this corner by single proportionment between the northeast corner of Section 14 and the Meander Corner on the north shore of Knights Lake.

SKETCH OF REFERENCE TIES & EVIDENCE

T.142N., R.26W.



Statement of evidence relative to this corner location is on the back of this page

I hereby certify that this survey, plan, or report was prepared by me or under my direct supervision and that I am a duly licensed Land Surveyor under the laws of the State of Minnesota.

LaVerne Leuelling 11-16-97
 LaVerne Leuelling Date
 Registered Land Surveyor No. 18089
 NORTHERN LIGHTS SURVEYING & MAPPING

OFFICE OF THE COUNTY RECORDER
County of Cass

I hereby certify that this document was filed in the Recorder's office.

Time: 3:20 P .M. Date: Dec. 8, 1997
 Recorder Claudine Kaylor
 By K.S. Deputy
 DOCUMENT NO. 395056

Statement of Evidence

East Quarter Corner, Section 14, Township 142 North, Range 26 West, of the Fifth Principal Meridian, Cass County, Minnesota.

1872; General Land Office (G.L.O.) survey notes; Deputy Surveyor E.W. Griffin set a wooden post for the quarter corner and referenced it with the following:

8" Norway Pine (0.203m)	8" Norway Pine (0.203m)
N80°E	S70°W
10 Links (2.012m)	12 Links (2.414m)

Said records are on file with the Secretary of State, St. Paul, Minnesota; handwritten copies of these notes are on file with the United States Department of Agriculture - Forest Service (U.S.D.A.-F.S.) Chippewa National Forest Supervisor's Office, Cass Lake, Minnesota.

October, 1863; U.S.D.A.-F.S. Field Book #1, p.33; U.S.D.A.-F.S. survey crew measured from the re-established meander corner on the lake north along a fence line to a fence intersection approximately 1308' (398.679m) (government measure 1267.2' [386.243m]), but found no evidence of the original corner or references.

October, 1998; Northern Lights Surveying and Mapping, Inc. crew of Mike Smith and Pete Berg cruised to the corner location and established two Global Positioning System (G.P.S.) search positions which were used during a G.P.S. session. The crew noted a fence line running east-west approximately 3' (0.914m) south of the corner position, and a hacked pine stump approximately 2' (0.610m) to the south. These items were tied into the search positions.

June 19, 1997; Northern Lights Surveying and Mapping, Inc. crew of Berg and Gerving set a 1.219m long, 0.015m diameter galvanized steel pipe with a stamped 0.063m diameter brass cap for the quarter corner by single proportionment between the northeast corner of Sections 14 and the Meander Corner on the north shore of Knights Lake.

0.127m Sugar Maple	0.178m Sugar Maple	0.178m Twin Maple	Steel Signpost
S80°W	S56°E	S53°W	West
10.670m to 20d nail	10.798m to 20d nail	10.854m to 20d nail	1.000m
in north face	in south face	in west face	sign 54-9
up 0.160m	up 0.100m	0.200m	

Northern Lights Surveying and Mapping, Inc. Slater Township Field Book #2, p.59.

Coordinates

Cass County North

Northing = 65,160.774 meters
Easting = 174,583.510 meters

State Plane Coordinates

Minnesota Central Zone
NAD 83

Northing = 335,155.687 meters
Easting = 824,711.939 meters

Latitude = 47°06'54.64235 North
Longitude = 93°55'27.78901 West