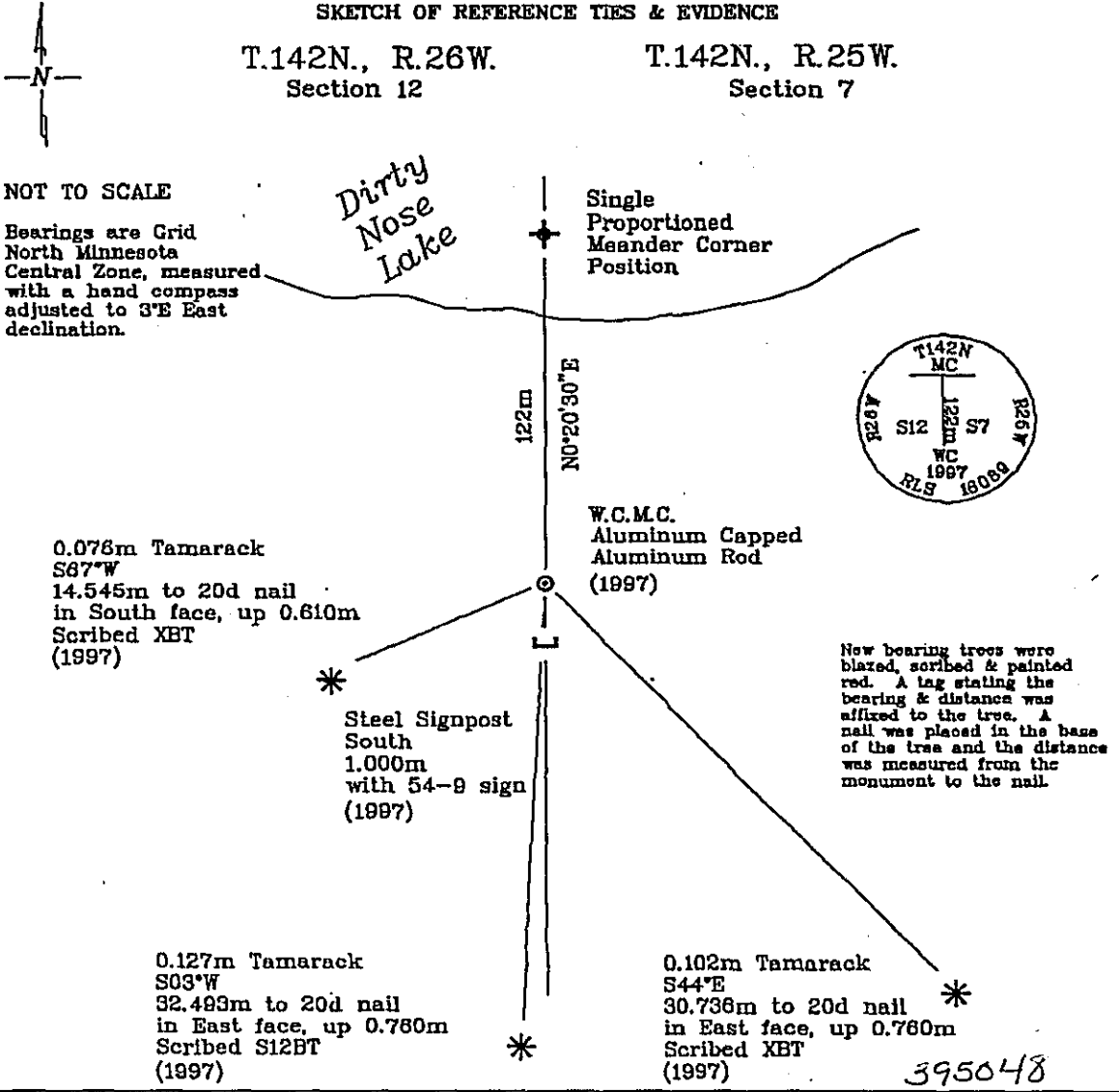


CERTIFICATE OF LOCATION OF GOVERNMENT CORNER

Witness Corner to the Meander Corner (W.C.M.C.), east side Section 12, Township 142 North, Range 26 West, of the Fifth Principal Meridian, Cass County, Minnesota.

On January 28, 1997, Northern Lights Surveying and Mapping, Inc. monumented a witness corner 122.00 meters southerly of the single-proportioned meander corner position on line between the East Quarter Corner, Section 12, and the East Quarter Corner, Section 1, Township 142 North, Range 26 West.

SKETCH OF REFERENCE TIES & EVIDENCE



New bearing trees were blazed, scribed & painted red. A tag stating the bearing & distance was affixed to the tree. A nail was placed in the base of the tree and the distance was measured from the monument to the nail.

395048

Statement of evidence relative to this corner location is on the back of this page

I hereby certify that this survey, plan, or report was prepared by me or under my direct supervision and that I am a duly Licensed Land Surveyor under the laws of the State of Minnesota.

LaVerne Leucelling 11-16-97
 LaVerne Leucelling Date
 Registered Land Surveyor No. 16089
 NORTHERN LIGHTS SURVEYING & MAPPING

OFFICE OF THE COUNTY RECORDER
 County of Cass

I hereby certify that this document was filed in the Recorder's office.

Time: 3:00 P .M. Date: Dec. 8, 1997
 Recorder Claudine Kaylor
 By K.S. Deputy
 DOCUMENT NO. 395048

Statement of Evidence

Witness Corner to the Meander Corner (W.C.M.C.) common to Section 7, Township 142 North, Range 25 West, and Section 12, Township 142 North, Range 26 West, of the Fifth Principal Meridian, Cass County, Minnesota.

November, 1871; General Land Office (G.L.O.) survey notes; Deputy Surveyors Walker, Allen, and Putnam set a wooden post for the Meander Corner and referenced it with the following:

6" Spruce (0.152m)	4" Spruce (0.102m)
S46°E	S20°W
15 Links (3.016m)	12 Links (2.414m)

Said records are on file with the Secretary of State, St. Paul, Minnesota; copies of these notes are on file with the Cass County Surveyor's Office, Walker, Minnesota.

November 2, 1998; Northern Lights Surveying and Mapping, Inc. crew chief David Anderson cruised to the area of the Meander Corner and established a search position which was used in a Global Positioning System (G.P.S.) session. The position was marked by a barn nail in a Tamarack cut off 1.200m above water level. There were no ties available. A search for original G.L.O. evidence was conducted at this time, but none was found.

January 28, 1997; Northern Lights Surveying and Mapping, Inc. crew of David Anderson and Joe Foster traversed to the single-proportioned meander corner position on line between the quarter corner common to Sections 12 and 7 and the quarter corner common to Sections 1 and 8, and found it to lie in Dirty Nose Lake. A search for evidence was conducted, but none was found. The crew then set a 3.658m long, 0.019m diameter aluminum rod with a 0.083m diameter aluminum cap, up 0.300m. The following references were established:

0.102m Tamarack	0.127m Tamarack	0.076m Tamarack
S44°E	S03°W	S87°W
30.736m to 20d nail	32.493m to 20d nail	14.545m to 20d nail
in East face, up 0.760m	in East face, up 0.760m	in South face, up 0.610m
Scribed XBT	Scribed S12BT	Scribed XBT

Steel Signpost
South
1.000m
with 54-9 sign

The crew noted that the W.C.M.C. falls 122m southerly, on line, from the single proportioned Meander Corner position in a bog mat.

Northern Lights Surveying and Mapping, Inc. Slater Township Field Book #2, pp. 62-63.

Coordinates:

Cass County North:

Northing = 87,141,064 meters
Easting = 176,235,091 meters

State Plane Coordinate System
Minnesota Central Zone
NAD 83

Northing 337,136.501 meters
Easting = 826,382.712 meters

Latitude = 47°07'58.55804" North
Longitude = 93°54'09.07337" West