

CERTIFICATE OF LOCATION OF GOVERNMENT CORNER

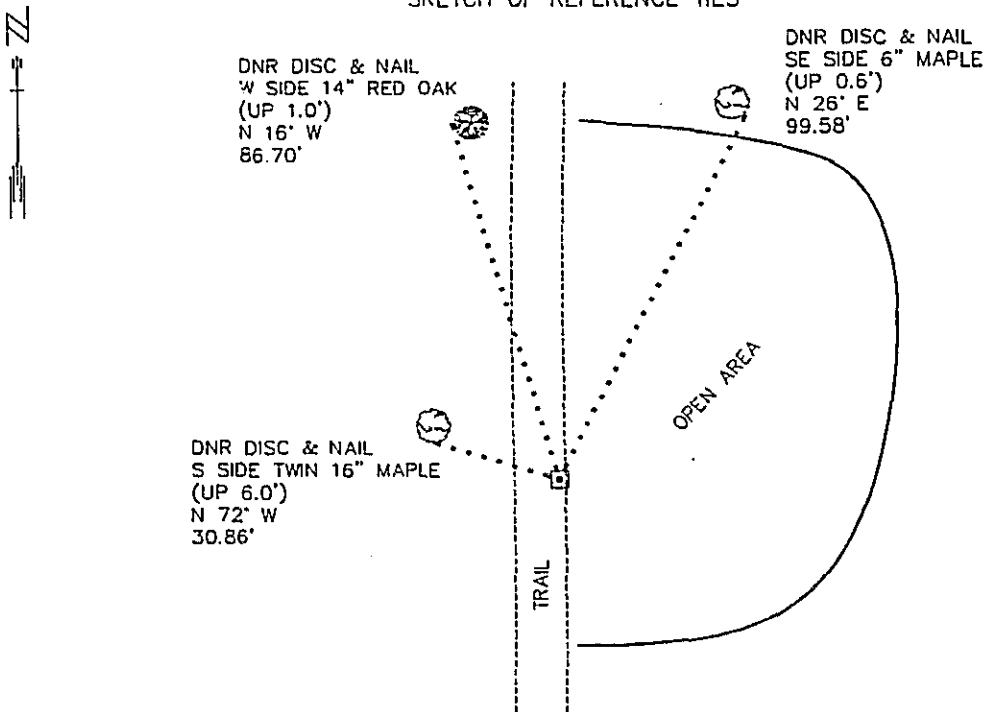
NORTH QUARTER Corner of Section 20 Township 134 N Range 30 W , 5th P.M.

STATE OF MINNESOTA, County of CASS

At the corner location shown on the sketch:

- On _____ found a _____
DATE
- left monument as found, lowered monument, removed monument (explain)
- On 5/31/94 Placed a 3/4" x 24" REBAR WITH ALUMINUM CAP STAMPED: "DNR SURVEY MARKER"
DATE
(DOWN 0.2') ON E EDGE OF N-S TRAIL. +/- 8' N OF TOP OF HILL.

SKETCH OF REFERENCE TIES



NOT TO SCALE
BEARINGS OBSERVED WITH A COMPASS

Statement of evidence relative to this corner location is on back of page.

DATE 8/1/94
FILE SFT 00039

I hereby certify that this document and the data contained herein was prepared by me or under

my direct supervision.
John D. Walker 10-17-94
SIGNATURE DATE

Registration No. 16098

- Land Surveyor, Professional Engineer
 County Surveyor, County Engineer

OFFICE OF THE COUNTY RECORDER
County of CASS

I hereby certify that this document was filed in
the Co. recorders office at 10:00 A.M. on the
22nd day of February A.D., 1996
County Recorder Claudine Kaylar
By N/S, Deputy
DOCUMENT NO. 375014

N-7

North Quarter Corner Section 20, Township 134 North, Range 30 West, 5th P.M.

The Department of Natural Resources, Bureau of Engineering (BOE) made the following contacts for corner information:

Minnesota Secretary of State
Cass County Surveyors Office
Landecker & Associates, Walker & Pequot Lakes
Widseth, Smith & Nolting, Brainerd
Area Landowners

1868 This corner was originally established by the U.S. General Land Office Survey. The government notes show the corner marked with a post and witnessed by the following bearing trees:

White Pine 34", N 68° E, 62 links (40.92')

Birch 12", S 6° W, 48 links (31.68')

1994 BOE computed a position for this corner by the single proportional method between the section corners east and west. The distance between the section corners is 5283.94'. A search was made at the computed position but no corner evidence was found. A DNR survey marker was set at the computed position to perpetuate the quarter corner.

For information regarding this survey, contact the Minnesota Department of Natural Resources, Bureau of Engineering, Survey Section, 500 Lafayette Road, St. Paul, MN 55155-4029.