

CERTIFICATE OF LOCATION OF GOVERNMENT CORNER

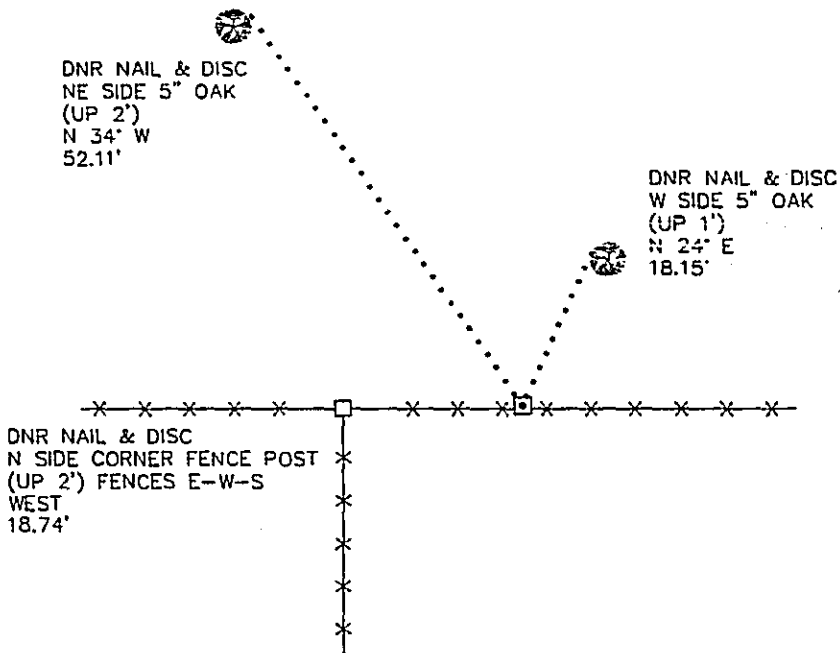
NORTHEAST Corner of Section 16, Township 135 N, Range 31 W, 5th P.M.

STATE OF MINNESOTA, County of CASS

At the corner location shown on the sketch:

- On _____ found a _____
DATE
- left monument as found, lowered monument, removed monument (explain)
- On 12/22/93 Placed a 3/4" x 24" IRON ROD WITH ALUMINUM CAP STAMPED: "DNR SURVEY MARKER"
DATE
(UP 0.1') 2' NORTH OF AN EAST-WEST FENCE, AT WEST EDGE OF A SWAMP.

SKETCH OF REFERENCE TIES



NOT TO SCALE
BEARINGS OBSERVED WITH A COMPASS

Statement of evidence relative to this corner location is on back of page.

DATE 1/26/94
FILE WMA01198

I hereby certify that this document and the data contained herein was prepared by me or under my direct supervision.

John D. Woodard 3-27-95
SIGNATURE DATE

Registration No. 16098

Land Surveyor, Professional Engineer
 County Surveyor, County Engineer

OFFICE OF THE COUNTY RECORDER
County of CASS

I hereby certify that this document was filed in the Co. recorders office at 9:40 A. .M. on the 4th day of APRIL A.D., 1995

County Recorder Claudine Kaylar
By ns Deputy
DOCUMENT NO. 365899

Northeast Corner Section 16, Township 135 North, Range 31 West, 5th P.M.

The Department of Natural Resources, Bureau of Engineering (BOE) made the following contacts for information concerning this corner:

**Minnesota Secretary of States Office
Cass County Surveyors Office
Cass County Highway Department
Landecker and Associates
Donald Coulter**

1870 The U.S. General Land Office set a post to mark this corner and the following bearing trees were marked:

Bur Oak 4"	S 80° W	16 links (10.56')
Lind 5"	N 21° W	41 links (27.06')
Balsam 5"	N 63° E	31 links (20.46')
Spruce 6"	S 59° E	37 links (24.42')

1970's Donald Coulter made surveys for the plats of Wilderness Park Estates and Wilderness Park Estates 1st, 2nd, 3rd and 4th Additions. He went around the outside of sections 10, 11, 12, 13, 14 and 15. He established or found the corners along the north line of sections 10, 11, 12 and the south line of sections 13, 14, 15 and the northwest corner section 15 and the northeast corner of section 13. The section corners inside of this big loop were computed by double proportion and the quarter corners computed lost.

1971 Donald Coulter had a 1 1/2" iron pipe, up 2', 3.5' north of an east-west fence line. He measured 5271.62 feet to the northeast corner of section 9 and 5305.92 feet to the northeast of section 21.

1993 The BOE searched for this corner at Coulter's location but didn't find any monument. An east-west fence with a fence south was located about 18 feet west-southwest of Coulter's location. Not finding anything that would dispute Coulter's corner position, a DNR Survey Marker was set to mark the corner and tied out as shown on the face of this certificate.

For information regarding this survey, contact the MN Department of Natural Resources, Bureau of Engineering, Survey Section, 500 Lafayette Road, St. Paul, MN 55155-4029.