

CERTIFICATE OF LOCATION OF GOVERNMENT CORNER

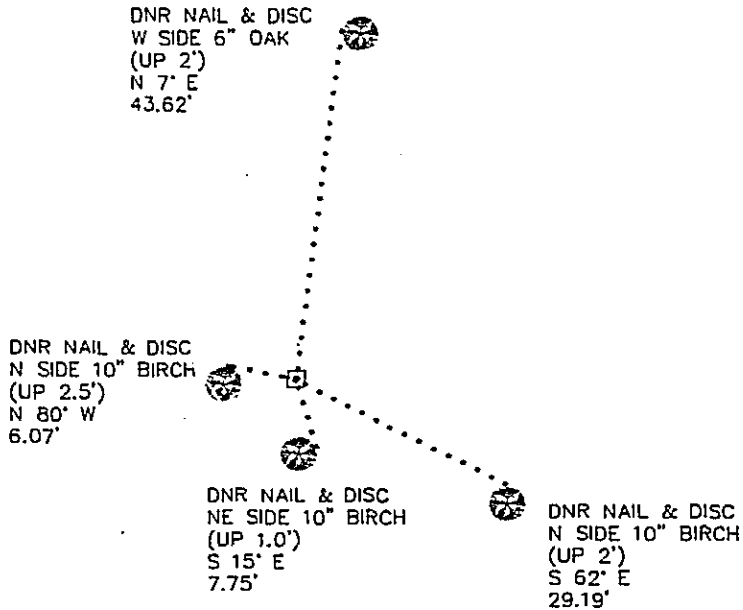
EAST QUARTER Corner of Section 10, Township 135 N, Range 31 W, 5th P.M.

STATE OF MINNESOTA, County of CASS

At the corner location shown on the sketch:

- On _____ found a _____
DATE
- left monument as found, lowered monument, removed monument (explain)
- On 7/13/94 Placed a 3/4" x 24" IRON ROD WITH ALUMINUM CAP STAMPED: "DNR SURVEY MARKER"
DATE
(UP 0.1') WITH RIBBON STICK IN WOODS.

SKETCH OF REFERENCE TIES



NOTE:
IT IS:
N 0°36'57" E, 2657.06'(BEARING ASSUMED)
TO THE NORTHEAST CORNER OF SECTION 10
S 0°36'57" W, 2657.06'(BEARING ASSUMED)
TO THE NORTHEAST CORNER OF SECTION 15.

NOT TO SCALE
BEARINGS OBSERVED WITH A COMPASS

Statement of evidence relative to this corner location is on back of page.

DATE 10/12/94
FILE WMA01198

I hereby certify that this document and the data contained herein was prepared by me or under

my direct supervision.

John D. Walker 3-27-95
SIGNATURE DATE

Registration No. 16098

- Land Surveyor, Professional Engineer
 County Surveyor, County Engineer

OFFICE OF THE COUNTY RECORDER

County of CASS

I hereby certify that this document was filed in the Co. recorders office at 9:30 A. M. on the 4th day of APRIL A.D., 1995

County Recorder Claudine Kaylar
By N.B., Deputy

DOCUMENT NO. 365898

East Quarter Corner Section 10, Township 135 North, Range 31 West, 5th P.M.

The Department of Natural Resources, Bureau of Engineering (BOE) made the following contacts for information concerning this corner:

Minnesota Secretary of States Office
Cass County Surveyors Office
Cass County Highway Department
Landecker and Associates
Donald Coulter

1870 The U.S. General Land Office set a post to mark this corner and the following bearing trees were marked:

W. Pine 12" N 52°30' W 11 links (7.26')
W. Pine 14" S 80° E 6 links (3.96')

1970's Donald Coulter made surveys for the plats of Wilderness Park Estates and Wilderness Park Estates 1st, 2nd, 3rd and 4th Additions. He went around the outside of sections 10, 11, 12, 13, 14 and 15. He established or found the corners along the north line of sections 10, 11, 12 and the south line of sections 13, 14, 15 and the northwest corner section 15 and the northeast corner of section 13. The section corners inside of this big loop were computed by double proportion and the quarter corners computed lost.

1979 Myron Landecker surveyed the plat of Wilderness Park Estates Seventh Addition. The description for the plat is based on corners in the plat of Wilderness Park Estates. The northeast corner of section 14 and the south and west lines of section 11 are shown only as approximate locations.

1993 The BOE searched for this corner. Nothing was found in this area and it fell in an unplatted area. Coulter's computations for corners were reviewed and it looks like the northeast corner of section 14 wasn't double proportioned using GLO distances, but computed at one third of the distance from the northeast corner of section 13 to the northeast corner of section 16. Using Coulter's location for the northeast corner of section 13, southeast corner of section 14, northeast corner of section 11 and the northeast corner of section 16, a double proportion position using the GLO distances was computed for the northeast corner of section 14. This point fell 0.3' south and 27.3' west of Coulter's position. Then a position was computed at a double proportion with GLO distances for the northeast corner of section 15 using the computed northeast corner of section 14, southeast corner of section 15, northeast corner of section 10 and the northeast corner of section 16. Using this computed position for the northeast corner of section 15 and the northeast corner of section 10, the lost position was computed.
A DNR Survey Marker was set to mark the lost position and was tied out as shown on the face of this certificate.

For information regarding this survey, contact the MN Department of Natural Resources, Bureau of Engineering, Survey Section, 500 Lafayette Road, St. Paul, MN 55155-4029.