

# CERTIFICATE OF LOCATION OF GOVERNMENT CORNER

Northeast Corner of Section 10, Township 141N, Range 26W, 5th P.M.

STATE OF MINNESOTA, County of Cass

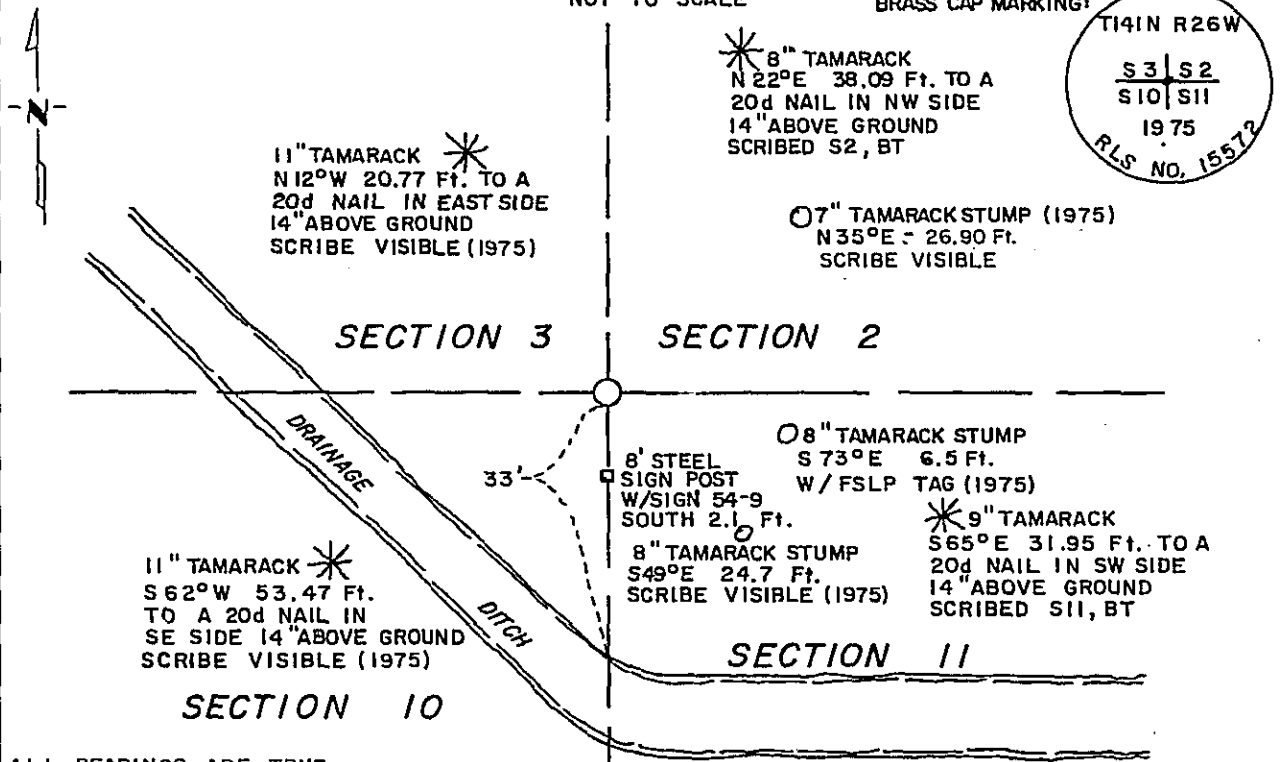
At the corner location shown on the sketch:

- On 2/9/95 found a 2½" Galvanized iron monument w/a 3" brass tablet  
DATE  
 stamped to identify the corner-18" above ground.
  - left monument as found,  lowered monument,  removed monument (explain)
- On \_\_\_\_\_ placed a \_\_\_\_\_  
DATE

MAGNETIC: 2°E DECL.

SKETCH OF REFERENCE TIES  
NOT TO SCALE

BRASS CAP MARKING:



ALL BEARINGS ARE TRUE  
 ALL DISTANCES HORIZ. AND TEMP. CORRECTED  
 ALL TREES MARKED WITH RED ENAMEL PAINT AND 54-3 (BEARING TREE) TAGS

Statement of evidence relative to this corner location is on back of page.

365509

I hereby certify that this survey, plan or report was prepared by me or under my direct supervision and that I am a duly Registered Land Surveyor under the laws of the State of Minnesota.

*Lowell G. Schellack*

Date 3/21/95 Registration No. 15572

OFFICE OF THE COUNTY RECORDER  
 County of CASS

I hereby certify that this document was filed in the Co. Recorders office at 3:10 P.M. on the 21<sup>st</sup> day of MARCH A.D., 19 95

County Recorder Claudine Kaylar

By N.B., Deputy

DOCUMENT NO. 365509

Statement of Evidence: NORTHEAST CORNER OF SECTION 10, TOWNSHIP 141 NORTH, RANGE 26 WEST OF THE 5<sup>th</sup> PRINCIPAL MERIDIAN

The original public land survey was run in 1871 by Walker, Allen and Putnam. A post was set to mark the corner and four bearing trees were marked and recorded as accessories; A 7" spruce that bears N21°E-16 links(10.56 ft.); an 8" spruce that bears N35°W-13 links(8.58 ft.); a 10" spruce that bears S60°E-28 links(18.58 ft.); and an 8" spruce that bears S34°W-24 links(15.84 ft.). The notes of this survey are on file in the office of the Secretary of State, St. Paul, MN.

In 1936 Harrison Adams, CCC, was at the corner. He found an iron pipe in place, 26" above ground in poor condition and replaced it with a new one. He found a cedar stump that bears N39°W-12 links(7.92 ft.) from the iron marked S3. He said it is believed to be the original corner. He placed a metal location poster on a 6' spruce on the SE side of the tree from which the corner bears N40°E-16.5 ft. The corner is 25 links north of the drainage ditch. Form 874, CCC, USFS, Cass Lake, MN.

On January 27, 1975 Kurt Krause and Leo Whithoff, USFS Technicians, were at the corner. They found a 2"x14" iron pipe on top of an old stake in place in the swamp. A wood post 36" long with a sharp point is referred to. From the iron, found a spruce stump, N35°W-8.6 ft. and an old rusted FSLP on a spruce stump, S34°W-15.8 ft. They set a 3"x7' Tam. post beside the iron and placed a FSLP tag on an 8" Tam. S73°E-6.5 ft. from the corner. Corner is 25 feet north of a drainage ditch which runs NW and E. USFS Survey Book #1, page 18, Cass Lake, MN.

On April 1, 1975 Krause returned with J.G. and set a 2"x5' FS iron monument with brass tablet marked to identify the corner but did not stamp an RLS number. He replaced the iron and post at the north edge of the new monument. Four new bearing trees were marked and recorded as accessories; A 7" tam. that bears N35°E-26.9 ft.; an 8" tam. that bears S49°E-24.7 ft.; a 7" tam that bears S66°W-53.2 ft.; and a 9" tam. that bears N10°W-20.9 ft. An 8' long steel sign post was also set north 3.1 ft. w/sign 54.9. USFS Survey Book #1, page 18, Cass Lake, MN.

On February 9, 1995 Tom Miller, RLS, and Jon Larson of Schellack Engineering and Land Surveying, USFS Contract, 1994-95, were at the corner. They found a 2½" dia. galvanized iron monument with a 3" brass tablet stamped to identify the corner-18" above ground. The cap was then stamped 15572. They found the four bearing trees that Krause had marked as well as the 8" tam. stump w/FSLP tag. They also found an 8' steel sign post 2.1 ft. south of the corner with a 54.4 sign and replaced it with a 54.9 sign.

For additional information, contact the Cass County Surveyor's Office in Walker, MN.