

CERTIFICATE OF LOCATION OF GOVERNMENT CORNER

North Quarter Corner of Section 10, Township 141N, Range 26W, 5th P.M.

STATE OF MINNESOTA, County of Cass

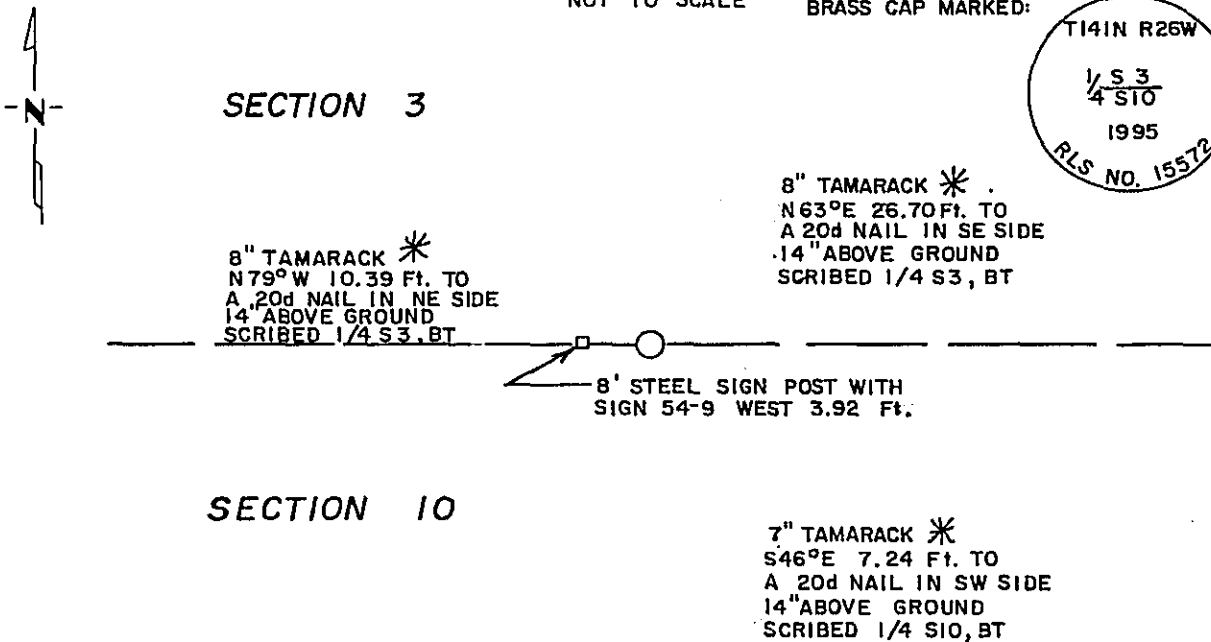
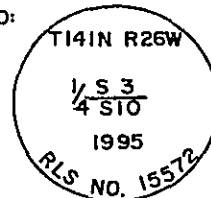
At the corner location shown on the sketch:

- On 10/26/94 found a Nothing
DATE
- left monument as found, lowered monument, removed monument (explain)
- On 2/8/95 placed a 2½" x 48" Dia. Galvanized iron monument with a 3" Dia. Brass Cap stamped to identify the corner-5" above ground.
DATE

MAGNETIC: 2° E. DECL.

SKETCH OF REFERENCE TIES
NOT TO SCALE

BRASS CAP MARKED:



ALL BEARINGS ARE TRUE
ALL DISTANCES HORIZ. AND TEMP. CORRECTED
ALL TREES MARKED WITH RED ENAMEL PAINT AND 54-3 (BEARING TREE) TAGS

Statement of evidence relative to this corner location is on back of page.

365508

I hereby certify that this survey, plan or report was prepared by me or under my direct supervision and that I am a duly Registered Land Surveyor under the laws of the State of Minnesota.

Lowell J. Schellack
Date 3/21/95 Registration No. 15572

OFFICE OF THE COUNTY RECORDER
County of CASS

I hereby certify that this document was filed in the Co. Recorders office at 3:05 P.M. on the 21st day of MARCH A.D., 1995

County Recorder Claudine Keyser
By N.B., Deputy
DOCUMENT NO. 365508

Statement of Evidence: NORTH QUARTER CORNER OF SECTION 10, TOWNSHIP 141 NORTH,
RANGE 26 WEST OF THE 5th PRINCIPAL MERIDIAN.

The original public land survey was run in 1871 by Walker, Allen and Putnam. A post was set to mark the corner and two bearing trees were marked and recorded as accessories; An 8" tamarack that bears N40°E-18 links(11.88 ft.); and a 4" tamarack that bears S12°W-18 links(11.88 ft.). The notes of this survey are on file in the office of the Secretary of State, St. Paul, MN.

On October 26, 1994 Tom Miller, RLS and Jon Larson of Schellack Engineering and Land Surveying traversed to a point midway between the southwest and southeast corners of Section 3 to establish a search location. An approximate corner location tag set by the USFS was found approximately 15 feet south of the search location. A search of the USFS records didn't reveal any history of the location tag. The area was carefully searched for any sign of a post or bearing trees. A 5 foot diameter hole was dug in the swamp in search of the original post. No evidence of the original post or original bearing trees was found during the search.

After analysis of the above information, it was determined that the corner is lost. The corner was re-established by single proportionate method between the southwest and southeast corners of Section 3. USFS Contract, 1994-95

For additional information, contact the Cass County Surveyor's Office in Walker, MN.