

CERTIFICATE OF LOCATION OF GOVERNMENT CORNER

East Quarter _____ Corner of Section 27, Township 142N, Range 26W, 5th P.M.

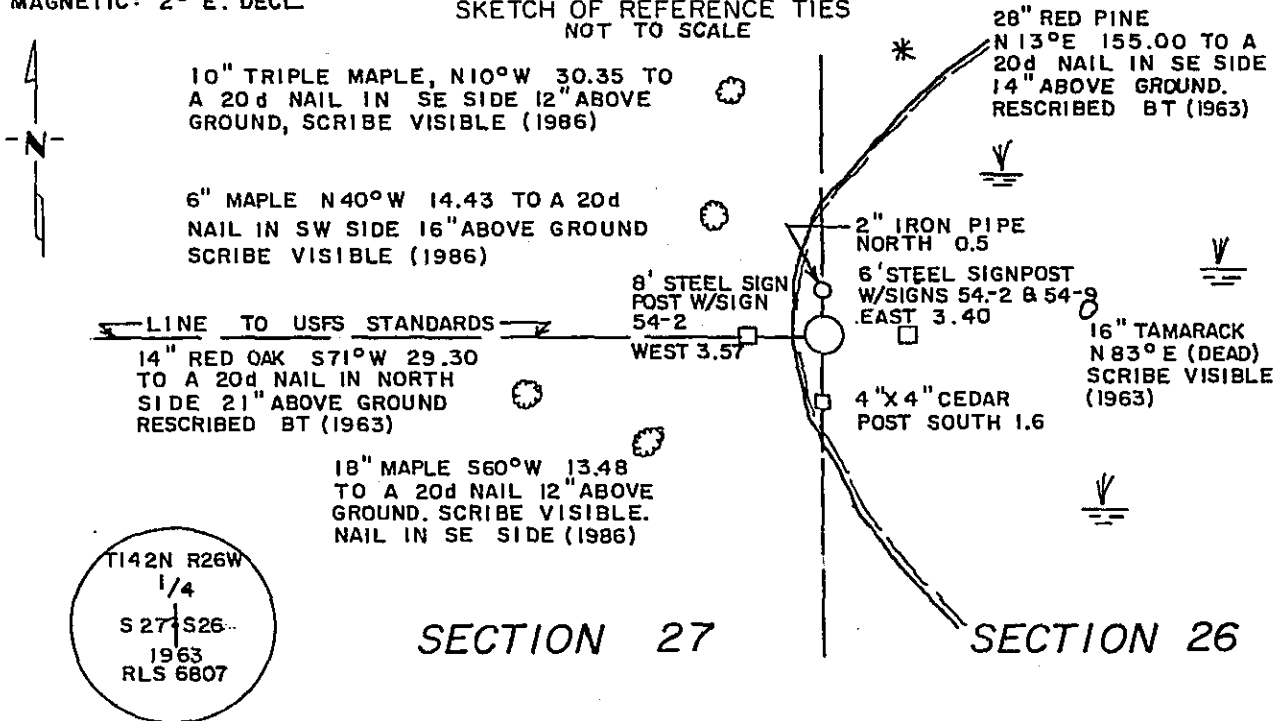
STATE OF MINNESOTA, County of Cass

At the corner location shown on the sketch:

- On 2/2/95 found a 2"x60" I.D. Galvanized steel monument with a 3" bronze tablet stamped to identify the corner - 18" above ground
 left monument as found, lowered monument, removed monument (explain)
- On _____ placed a _____

MAGNETIC: 2° E. DECL.

SKETCH OF REFERENCE TIES NOT TO SCALE



BRASS CAP MARKING

ALL BEARINGS ARE TRUE.

ALL DISTANCES ARE HORIZONTAL AND TEMP. CORRECTED.

ALL TREES MARKED WITH RED ENAMEL PAINT AND WITH A 54-3 (BEARING TREE) TAG

Statement of evidence relative to this corner location is on back of page.

365504

I hereby certify that this survey, plan or report was prepared by me or under my direct supervision and that I am a duly Registered Land Surveyor under the laws of the State of Minnesota.

Lowell J. Schellack

Date 3/21/95 Registration No. 15572

OFFICE OF THE COUNTY RECORDER
County of CASS

I hereby certify that this document was filed in the Co. Recorders office at 2:40 P.M. on the 21st day of MARCH A.D., 19 95

County Recorder Claudine Kaylar
By N.B., Deputy

DOCUMENT NO. 365504

Statement of Evidence: EAST QUARTER CORNER OF SECTION 27, TOWNSHIP 142 NORTH,
RANGE 26 WEST OF THE 5th PRINCIPAL MERIDIAN.

The original public land survey was run in 1872 by Griffin. A post was set to mark the corner and two bearing trees were marked and recorded as accessories; A 12" Aspen that bears S20°W-18 links(11.88 feet); and a 10" Aspen that bears East-11 links (7.26 feet). The notes of this survey are on file in the office of the Secretary of State, St. Paul, MN.

In 1921 James Flynn, Cass County Surveyor, was at the corner. He set a 1½"x44" iron monument to perpetuate the corner. The corner was set at proportional distance. Cass County Survey Book C, page 416, Cass County Courthouse, Walker, MN.

In 1963 William H. Okerman, RLS, was at the corner. He found the remains of a 2" Dia. iron pipe which was set by Cass County Surveyor Flynn in 1921. Okerman proceeded to set a 2" I.D.x 60" long galvanized steel monument filled with concrete and capped with a 3" Dia bronze tablet stamped to identify the corner in place of Flynn's pipe. Three bearing trees were marked and recorded as accessories; A 12" Tamarack that bears N83°E-62.5 feet; a 23" Red Pine that bears N13°E-155.0 feet; and an 8" Oak that bears S71°W-29.3 feet. A cedar post 4"x4"x60" with a red top was set 24" in the ground due south 2.25 feet with signs 54.2 and 54.4 attached. Survey notes at the USFS, Cass Lake, MN, Survey Book #1, page 59. Affidavit as to Location of Government Corner filed as #329 on 10/20/64 at the Cass County Recorder's Office, Cass County Courthouse, Walker, MN.

In 1982 and 1986 Walter Curo, RLS, was at the corner under USFS contracts and found the Okerman monument standing in good condition. In 1982 he set an 8' steel post with signs 3' east. In 1986 he marked and recorded three bearing trees as accessories; An 8" maple that bears N10°W-30.35 feet; a 4" maple that bears N40°W-14.43 feet; and an 8" maple that bears S60°W-13.6 feet. USFS Survey book #3, page 69, USFS, Cass Lake, MN. Also, filed a Certificate of Location of Government Corner, #291467 at the Cass County Recorder's Office, Cass County Courthouse, Walker, MN, 1986.

On February 2, 1995 Tom Miller, RLS and Jon Larson of Schellack Engineering and Land Surveying, USFS Contract, 1994-95, were at the corner. They found the 2" I.D.x60" long galvanized steel monument with a 3" bronze tablet stamped to identify the corner set by Okerman in 1963. They also found the three bearing trees marked and the 4"x4"x60" cedar post set by Okerman. They also found the 3 maple bearing trees marked by Curo in 1986.

For additional information, contact the Cass County Surveyor's Office in Walker, MN.