

# CERTIFICATE OF LOCATION OF GOVERNMENT CORNER

North Quarter Corner of Section 24, Township 143, Range 25, 5th P.M.

STATE OF MINNESOTA, County of Cass

At the corner location shown on the sketch:

On 10/25/94 found a 2 inch iron pipe with brass cap up 12 inches  
in bog.

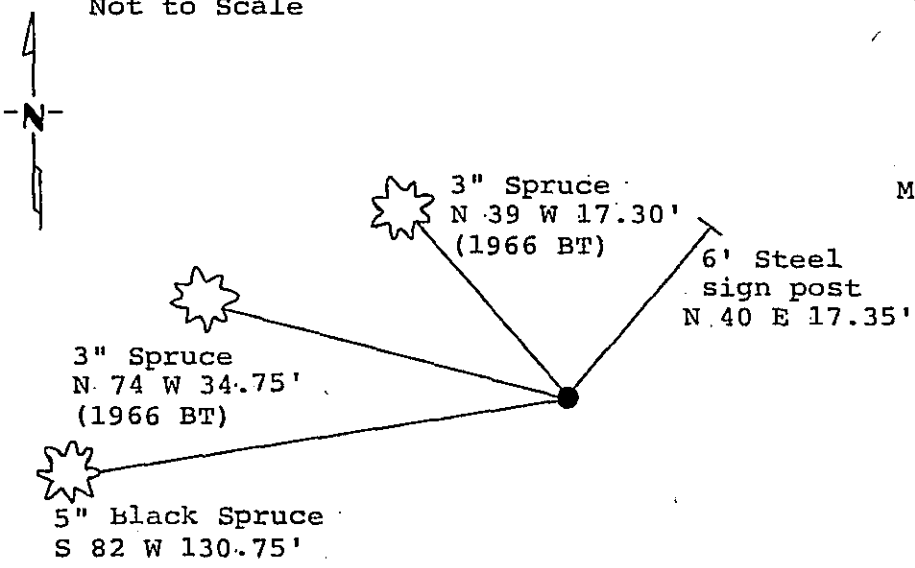
left monument as found,  lowered monument,  removed monument (explain)

On \_\_\_\_\_ placed a \_\_\_\_\_

Magnetic Decl: 5° East  
Not to Scale

### SKETCH OF REFERENCE TIES

All distances are horizontal to nail in side of tree



MONUMENT STAMPED:  
T143N R25W  
 $\frac{1}{4}$  S13  
S24  
1966  
RLS No. 6807

8' Steel sign post West 3.2'.  
8' Steel sign post East 2.9'.

All bearing trees are scribed, painted with red enamel and marked with a 54-3 (bearing tree) tag.

Statement of evidence relative to this corner location is on back of page.

I hereby certify that this document and the data contained herein was prepared by me or under my direct supervision.

Cary L. Baum 3/16/95  
SIGNATURE DATE

Registration No. 21367

- Land Surveyor
- County Surveyor

365398  
OFFICE OF THE COUNTY RECORDER  
County of CASS

I hereby certify that this document was filed in the Co. Recorders office at 12:10 P.M. on the 16th day of MARCH A.D., 19 95

County Recorder Claudia Kayser  
By N.O, Deputy

DOCUMENT NO. 365398

Statement of Evidence: North Quarter corner, Section 24, Township 143  
North, Range 25 West, Cass County, Minnesota

N-23

1872 Hayward Griffin, U.S. Deputy Surveyor, originally established this corner position while subdividing Township 143 North, Range 25 West. The notes indicate that he set a wood post and marked the following bearing trees: a 4 inch Spruce South 80 degrees West a distance of 50 lks (33.00 feet); and a 4 inch Spruce North 36 degrees East a distance of 40 lks (26.40 feet).

1966 on July 28, United States Forest Service notes in Book 1, Page 64 for Township 143 North, Range 25 West, show that Technician James Eckstrom found an old squared point in an open meadow in a Black Spruce swamp. He set a 2 inch by 60 inch galvanized steel pipe with bronze cap and marked the following bearing trees: a 3 inch Spruce North 39 degrees West a distance of 17.30 feet; and a 3 inch Spruce North 74 degrees West a distance of 34.60 feet.

1976 Bureau of Land Management dependent resurvey, notes on file in Secretary of State Office, found United States Forest Service 2 and 1/2 inch iron pipe with brass cap and both 1966 bearing trees in good condition.

1979 Milo E. Stefan, United States Forest Service, Registered Land Surveyor Number 12261, filed "Certificate of Location as to Government Corner", Document #246210. The corner was set from evidence of the original government survey. Monument and ties are per the 1966 United States Forest Service report.

1994 on October 25, a Landecker & Associates, Inc. survey crew traverses through corner area. They found a 2 inch iron pipe with brass cap up 12 inches in bog. The 1966 United States Forest Service ties are in good shape.