

CERTIFICATE OF LOCATION OF GOVERNMENT CORNER

East Quarter _____ Corner of Section 13, Township 143, Range 25, 5th P.M.
 STATE OF MINNESOTA, County of Cass

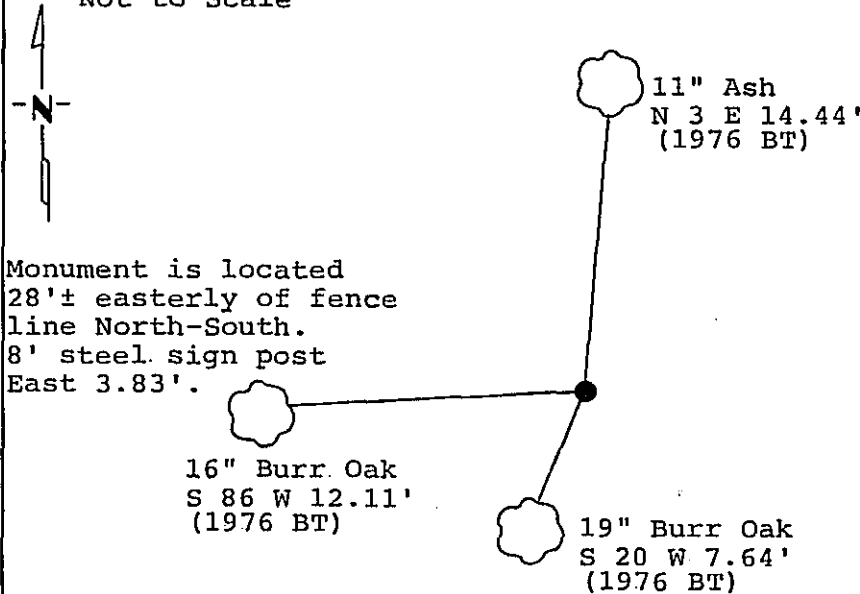
At the corner location shown on the sketch:

- On 10/14/94 found a 1 inch iron pipe with aluminum cap up 16
DATE
inches
- left monument as found, lowered monument, removed monument (explain)
- On _____ placed a _____
DATE

Magnetic Decl: 5° East
 Not to Scale

SKETCH OF REFERENCE TIES

All distances are horizontal to nail in side of tree



Monument is located 28'± easterly of fence line North-South. 8' steel sign post East 3.83'.

MONUMENT STAMPED
 T143N
1/4 S.C. | Sec 13
 R25W
 1976

All bearing trees are scribed, painted with red enamel and marked with a 54-3 (bearing tree) tag.

Statement of evidence relative to this corner location is on back of page.

I hereby certify that this document and the data contained herein was prepared by me or under my direct supervision.

[Signature]
SIGNATURE 3/16/95
DATE

Registration No. 21367

Land Surveyor

County Surveyor

365396
 OFFICE OF THE COUNTY RECORDER
 County of CASS

I hereby certify that this document was filed in the Co. Recorders office at 11:50 A.M. on the 16th day of MARCH A.D., 19 95

County Recorder Claudia Kaylar

By N.B., Deputy

DOCUMENT NO. 365396

Statement of Evidence:

East Quarter corner, Section 13, Township 143
North, Range 25 West, 5th Principal Meridian,
Cass County, Minnesota

L-25

1867 George Stuntz, U.S. Deputy Surveyor, originally established this corner position while running the east line of Township 143 North, Range 25 West. The notes indicate that he set a wood post and marked the following bearing trees: a 9 inch Tamarack North 45 degrees West a distance of 26 lks (17.16 feet); and a 6 inch Tamarack South 10 degrees West a distance of 32 lks (21.12 feet).

1900 U.S. Army Corps of Engineers notes in Book A1-220, Page 25 (on file in United States Forest Service Office in Cass Lake, Minnesota and on file in the Cass County Surveyor's Office) shows that both reference trees were found with blazes intact. The notes indicate that the 6 inch Tamarack is a 6 inch Spruce.

1975 in October, Itasca County Surveyor's Office notes in Loose Leaf Field Book of Township 55 North, Range 27 West on page 56 show they traversed the east line of Section 13 (west line of Township 55 North, Range 27 West). No evidence of corner was found.

1976 in January, Itasca County Surveyor's Office notes in Loose Leaf Field Book of Township 55 North, Range 27 West on page 71 show that they set a County monument by single proportion measurement and marked the following bearing trees: an 18 inch Oak South 13 degrees West a distance of 7.57 feet (tag); a 14 inch Oak South 80 degrees West a distance of 11.44 feet; and a 6 inch Ash North 4 degrees West a distance of 13.90 feet.

1994 on October 14, a Landecker & Associates, Inc. survey crew traverse and tie into the standard East Quarter corner of Section 13 and find the three 1976 bearing trees. Distances are to the face of the tree. On December 1, they tie out the found 1 inch iron pipe with aluminum cap. The 1976 bearing trees were re-marked as shown and a steel sign post set as noted on front of this certificate. Landecker & Associates, Inc. accepts the found monument as marking the lost, single proportion position as established by Itasca County.