

CERTIFICATE OF LOCATION OF GOVERNMENT CORNER

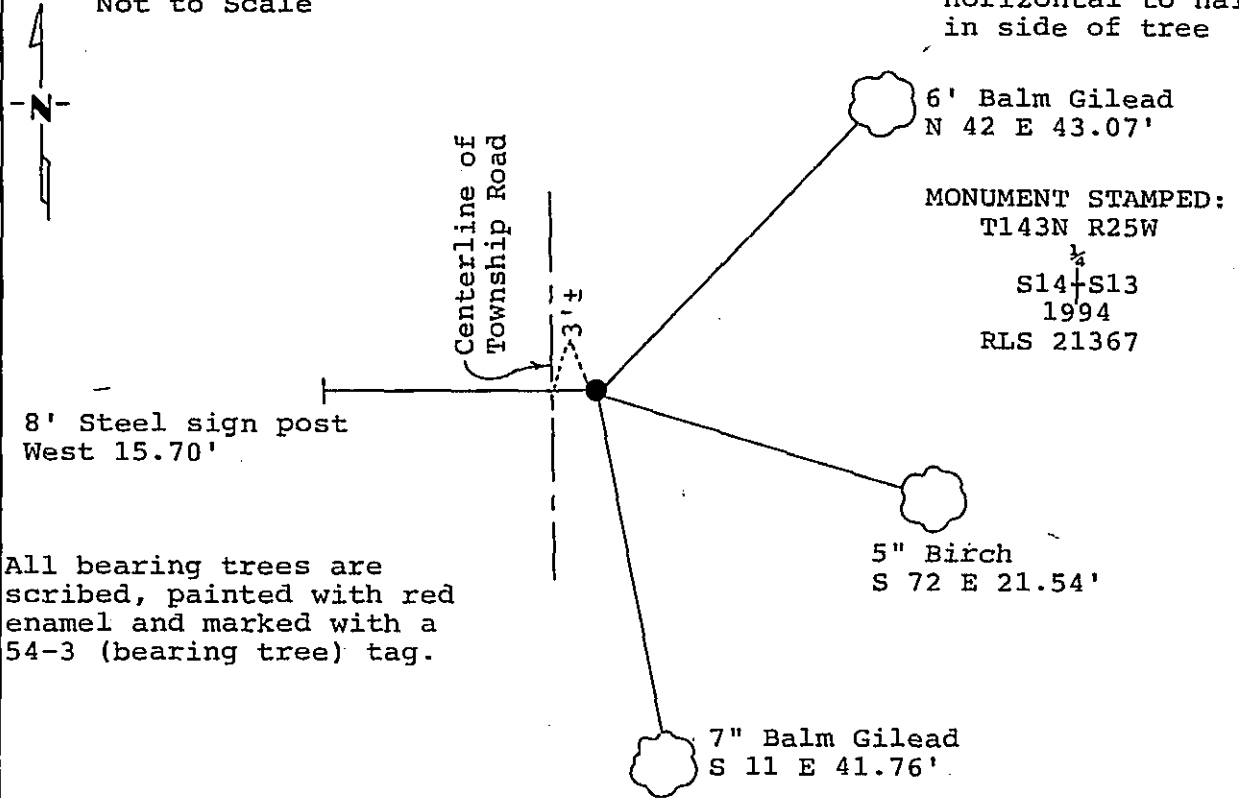
East Quarter _____ Corner of Section 14, Township 143, Range 25, 5th P.M.
 STATE OF MINNESOTA, County of Cass

At the corner location shown on the sketch:

- On _____ found a _____
DATE
- left monument as found, lowered monument, removed monument (explain)
- On 11/23/94 placed a 2" x 20" flanged monument with brass cap
 down 10^{9/16}".

Magnetic Decl: 5° East SKETCH OF REFERENCE TIES
 Not to Scale

All distances are horizontal to nail in side of tree



All bearing trees are scribed, painted with red enamel and marked with a 54-3 (bearing tree) tag.

Statement of evidence relative to this corner location is on back of page.

I hereby certify that this document and the data contained herein was prepared by me or under my direct supervision.

Clayton L. Jensen 3/16/95
SIGNATURE DATE

Registration No. 21367
 Land Surveyor
 County Surveyor

365395

OFFICE OF THE COUNTY RECORDER
 County of CASS

I hereby certify that this document was filed in the Co. Recorders office at 11:40 A.M. on the 16th day of MARCH A.D., 1995

County Recorder Claudine Kaylar
 By N.B., Deputy
 DOCUMENT NO. 365395

Statement of Evidence:

East Quarter corner, Section 14, Township 143
North, Range 25 West, Cass County, Minnesota

L-21

1872 Hayward Griffin, U.S. Deputy Surveyor, originally established this corner position while subdividing Township 143 North, Range 25 West. The notes indicate that he set a wood post and marked the following bearing trees: a 6 inch Elm North 74 degrees West a distance of 20 lks (13.20 feet); a 7 inch Linden South 44 degrees East a distance of 30 lks (19.80 feet).

1966 on July 27, United States Forest Service notes in Book 1, Page 65 for Township 143 North, Range 25 West, show that Technician James Eckstrom chained south from United States Forest Service road 2640 feet. Search area is in road in open field.

1994 in October, a Landecker & Associates, Inc. survey crew traversed into the area of the corner. On November 1, they searched for original or subsequent survey evidence. Nothing was found. Landecker & Associates, Inc. believes the corner to be lost and computes a position for the lost, single proportion position between the Northeast and Southeast corners of said Section 14. On November 23, they set a 2 inch by 24 inch long iron pipe with stamped brass cap at the single proportion position.