

CERTIFICATE OF LOCATION OF GOVERNMENT CORNER

Northeast Corner of Section 18, Township 144, Range 27, 5th P.M.

STATE OF MINNESOTA, County of Cass

At the corner location shown on the sketch:

On 10/31/94 found a 1964 6"x 60" cylindrical concrete monument with stamped brass cap up 18".

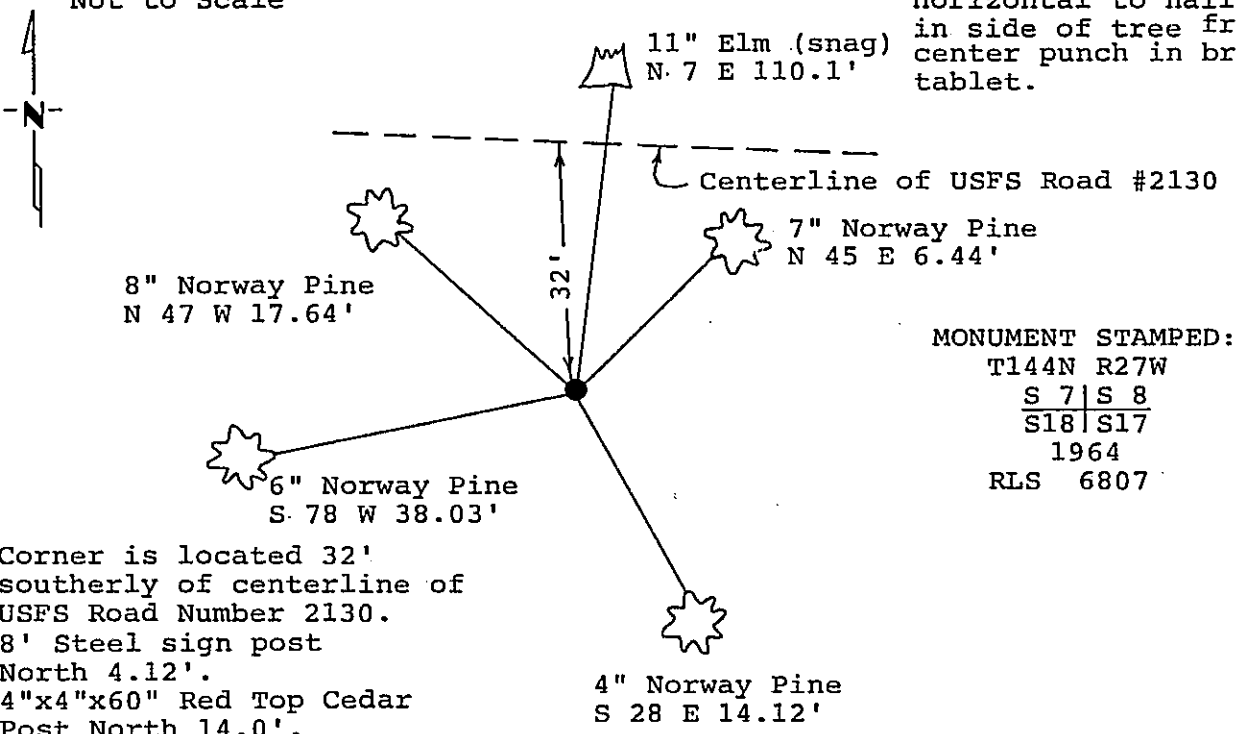
left monument as found, lowered monument, removed monument (explain)

On _____ placed a _____

Magnetic Decl: 5° East
Not to Scale

SKETCH OF REFERENCE TIES

All distances are horizontal to nail in side of tree from center punch in brass tablet.



MONUMENT STAMPED:
T144N R27W
S 7 | S 8
S18 | S17
1964
RLS 6807

Corner is located 32' southerly of centerline of USFS Road Number 2130.
8' Steel sign post North 4.12'.
4"x4"x60" Red Top Cedar Post North 14.0'.

All bearing trees are scribed, painted with red enamel and marked with a 54-3 (bearing tree) tag.

Statement of evidence relative to this corner location is on back of page.

I hereby certify that this document and the data contained herein was prepared by me or under my direct supervision.

Alvin J. Lam SIGNATURE 3/16/95 DATE

Registration No. 21367

- Land Surveyor
- County Surveyor

365391

OFFICE OF THE COUNTY RECORDER
County of CASS

I hereby certify that this document was filed in the Co. Recorders office at 11:00 A.M. on the 16th day of MARCH A.D., 19 95

County Recorder Claudia Kaylar

By N.B., Deputy

DOCUMENT NO. 365391

Statement of Evidence:

Northeast corner, Section 18, Township 144
North, Range 27 West, Cass County, Minnesota

J - 5

1873 P.H. Conger, U.S. Deputy Surveyor, originally established this corner position while subdividing Township 144 North, Range 27 West. The notes indicate that he set a wood post and marked the following bearing trees: a 5 inch Poplar North 88 degrees East a distance of 16 lks (10.56 feet); a 20 inch Poplar North 9 degrees West a distance of 6 lks (3.96 feet); a 6 inch Poplar South 50 degrees East a distance of 33 lks (21.78 feet); a 4 inch Poplar South 20 degrees East a distance of 21 lks (13.86 feet).

No Date: Civilian Conservation Corps notes on Form 874 in United States Forest Service records in Cass Lake, Minnesota, show that an 18 inch Aspen was found. A Forest Service Location Poster was placed on a post South a distance of 78 lks (51.48 feet). The post is located on the north edge of a road and the corner is on the south side of the road near the top of a ridge.

1924 on January 9, United States Forest Service notes show a new stake set for corner being a 3 inch soft Maple and two bearing trees: a 15 inch Poplar South 7 degrees West a distance of 12 feet; and an 11 inch Poplar stub South 55 degrees East a distance of 20 feet.

1937 Hal Craig, General Land Office dependent resurvey, filed at the Secretary of State Office, notes indicate he found the remains of all four original bearing trees. He set a 2 foot long by 6 inch diameter concrete monument with brass cap and marked the following bearing trees: an 8 inch Norway Pine North 15 and 1/4 degrees East a distance of 221 lks (145.86 feet); a 9 inch Red Oak South 59 degrees East a distance of 102 lks (67.32 feet); a 6 inch Balsam South 24 and 1/2 degrees West a distance of 57 lks (37.62 feet); and an 8 inch Cedar North 61 degrees West a distance of 199 lks (131.34 feet).

1966 on September 18, William Okerman, United States Forest Service Surveyor, Registered Land Surveyor Number 6807, notes in United States Forest Service Book of Township 144 North, Range 27 West, Page 11, show he found remains of the 1937 General Land Office survey (the bottom part of the monument and the Northeast Pine snag). He set a 6 inch by 60 inch cylindrical concrete monument capped with a 3 inch diameter bronze tablet stamped. He also marked the following bearing trees: a 6 inch Elm North 50 degrees East a distance of 63.4 feet; an 11 inch Elm North 7 degrees East a distance of 110.1 feet; a 10 inch Elm South 48 degrees East a distance of 151.5 feet; and a 4 inch by 4 inch by 60 inch Red Top Cedar post North a distance of 14.0 feet. He filed an "Affidavit As To Location Of Government Corner", Number 374, showing this information.

1994 on October 31, a Landecker & Associates, Inc. survey crew found the 1964 concrete monument in good shape up 18 inches located approximately 32 feet southerly of a road centerline. All 1937 ties were missing and only the 1964 Okerman 11 inch Elm snag was present. They marked new bearing trees as shown and set a steel sign post as noted on front of this certificate. Landecker & Associates, Inc. accepts the found monument as a perpetuation of the original corner.