

CERTIFICATE OF LOCATION OF GOVERNMENT CORNER

Northeast Corner of Section 12, Township 144, Range 28, 5th P.M.

STATE OF MINNESOTA, County of Cass

At the corner location shown on the sketch:

On 10/31/94 found a concrete monument with brass cap up 8 inches

DATE

left monument as found, lowered monument, removed monument (explain)

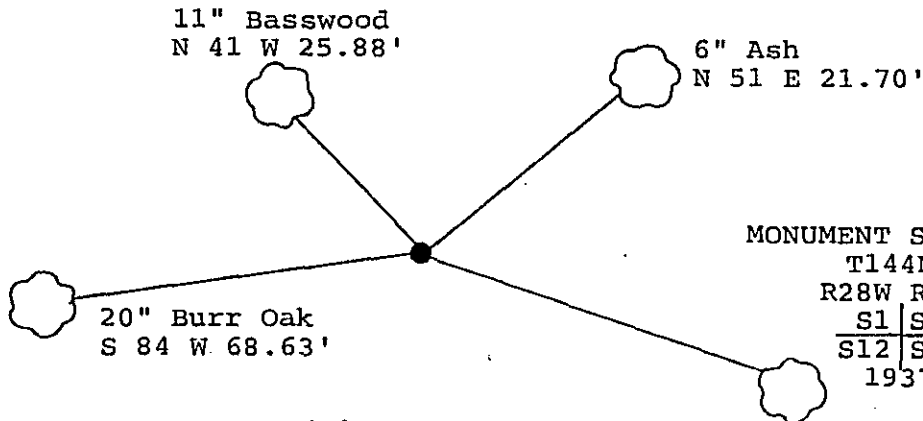
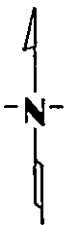
On _____ placed a _____

DATE

Magnetic Decl: 5° East
Not to Scale

SKETCH OF REFERENCE TIES

All distances are horizontal to nail in side of tree



MONUMENT STAMPED:
T144N
R28W R27W
S1 | S6
S12 | S7
1937

8' steel sign post West 2.67'.
8' steel sign post South 2.63'.
Corner is located 200'±
south of United States Forest
Service Road Number 2130.

23" White Oak
S 73½ E 56.76'
(1937 GLO BT &
1966 BT)

All trees are scribed, painted with red enamel and marked with a 54-3 (bearing tree) sign.

Statement of evidence relative to this corner location is on back of page.

I hereby certify that this document and the data contained herein was prepared by me or under my direct supervision.

[Signature]
SIGNATURE

3/16/95
DATE

Registration No. 21367

- Land Surveyor
 County Surveyor

365385
OFFICE OF THE COUNTY RECORDER
County of CASS

I hereby certify that this document was filed in the Co. Recorders office at 10:00 A.M. on the 16th day of MARCH A.D., 19 95

County Recorder Claudine Kaylan
By N.B., Deputy

DOCUMENT NO. 365385

Statement of Evidence:

Northeast corner, Section 12, Township 144
North, Range 28 West, Cass County, Minnesota

E - 25

1873 P.H. Conger, U.S. Deputy Surveyor, originally established this corner position while running the east line of Township 144 North, Range 28 West. The notes indicate that he set a wood post and marked the following bearing trees: a 4 inch Tamarack North 20 degrees East a distance of 15 lks (9.90 feet); a 3 inch Tamarack North 17 degrees West a distance of 20 lks (13.20 feet); a 3 inch Tamarack South 15 degrees East a distance of 13 lks (8.58 feet); and a 5 inch Tamarack South 43 degrees West a distance of 14 lks (9.24 feet).

1933 Civilian Conservation Corps notes on Form 874 in United States Forest Service records in Cass Lake, Minnesota, show a survey by Paul Moller. The notes indicate that he found a 2 inch by 2 inch by 3 and 1/2 foot squared stake in good condition and a 5 inch Oak (no bearing given) a distance of 25 feet. He placed a Forest Service Location Poster on a small 5 inch tree East a distance of .5 chains.

1937 Hal Craig, General Land Office dependent resurvey, filed at the Secretary of State Office, notes indicate he set a 2 foot long by 6 inch diameter concrete monument with brass cap at the proportional position and marked the following bearing trees: a 14 inch White Oak North 57 degrees East a distance of 73 lks (48.18 feet); a 16 inch White Oak South 73 and 1/2 degrees East a distance of 86 lks (56.76 feet); an 8 inch Ash South 65 and 3/4 degrees West a distance of 27 lks (17.82 feet); and a 9 inch Ash North 79 and 3/4 degrees West a distance of 19 lks (12.54 feet).

1966 United States Forest Service Technician, Milt Hansey, in United States Forest Service Book of Township 144 North, Range 27 West, Page 45, on file in Cass Lake, Minnesota, found the 1937 General Land Office monument in good condition and two trees from 1937 and stump of the other two 1937 bearing trees. He marked the following bearing trees: a 20 inch White Oak South 73 and 1/2 degrees East a distance of 56.76 feet (1937 GLO BT); a 12 inch Ash South 65 and 3/4 degrees West a distance of 17.82 feet (1937 GLO BT); a 5 inch Oak North 42 degrees East a distance of 11.5 feet; and a 5 inch Ash North 68 degrees West a distance of 46.1 feet. William Okerman, United States Forest Service surveyor, Registered Land Surveyor Number 6807, filed an "Affidavit As To Location Of Government Corner", Number 420, showing this information.

1994 on October 31, a Landecker & Associates, Inc. survey crew traverse through corner. They found the 1937 concrete monument with brass cap up 8 inches and also found the 1937 and 1966 White Oak (Southeast) now 23 inches at bearing and distance. The 1966 5 inch bearing tree is almost cut through by beaver's which have cut down the other bearing trees also. On December 23, they tie out the found monument and mark bearing trees as shown and set steel sign posts as noted on front of this certificate. Landecker & Associates, Inc. accepts the found monument as a perpetuation of the corner re-established in 1937 by the General Land Office.