

CERTIFICATE OF LOCATION OF GOVERNMENT CORNER

North Quarter Corner of Section 27, Township 141, Range 27, 5th P.M.
 STATE OF MINNESOTA, County of Cass

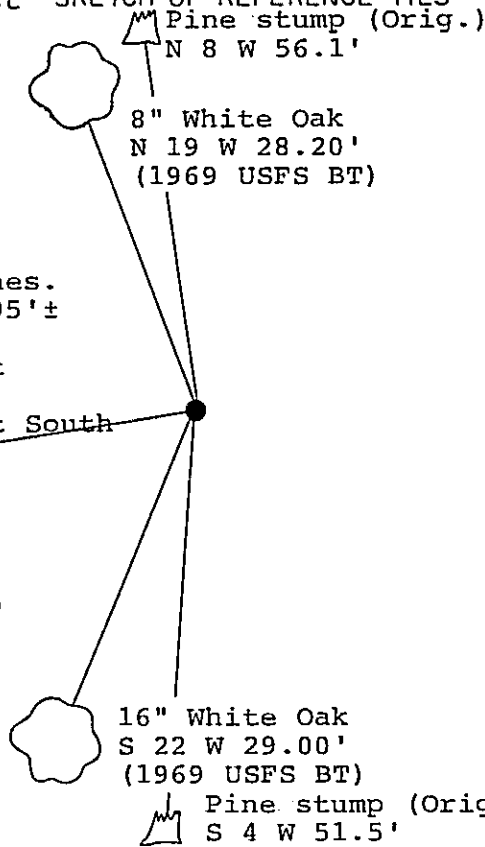
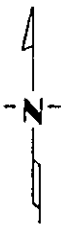
At the corner location shown on the sketch:

- On 12/11/93 found a 2 inch by 5 foot galvanized steel pipe
DATE
filled with concrete and capped with a 3 inch stamped brass tablet.
 left monument as found, lowered monument, removed monument (explain)
- On _____ placed a _____
DATE

Magnetic Decl: 5° East
 Not to Scale

SKETCH OF REFERENCE TIES

All distances are horizontal to nail in side of tree



Monument is up 24 inches.
 Monument is located 195'± easterly of trail.
 6 foot steel sign post North 4.8'.
 8 foot steel sign post South 3.0'.

MONUMENT STAMPED:
 T141N R27W
 $\frac{1}{4}$ S22
 $\frac{1}{4}$ S27
 1969
 RLS No. 6807

All bearing trees are scribed, painted with red enamel and marked with a 54-3 (bearing tree) tag.

Statement of evidence relative to this corner location is on back of page.

357306

I hereby certify that this survey, plan or report was prepared by me or under my direct supervision and that I am a duly Registered Land Surveyor under the laws of the State of Minnesota.

Werry L. Freeman
 Werry L. Freeman
 Date 5/4/94 Registration No. 21367

OFFICE OF THE COUNTY RECORDER
 County of CASS

I hereby certify that this document was filed in the Co. Recorders office at 9:20 A.M. on the 4th day of MAY A.D., 1994

County Recorder *Claudia Kaylar*
 By *N.B. [Signature]*, Deputy
 DOCUMENT NO. 357306

Statement of Evidence:

North Quarter corner, Section 27, Township 141
North, Range 27 West, Cass County, Minnesota

R-15

1874 P.H. Conger, U.S. Deputy Surveyor, originally established this corner position while subdividing Township 141 North, Range 27 West. The notes indicate that he set a wood post and marked the following bearing trees: an 18 inch Norway Pine North 8 degrees West a distance of 85 links (56.10 feet); and a 20 inch Norway Pine South 4 degrees West a distance of 78 links (51.48 feet).

1920 Cass County Surveyor's Office Record Book "C", Page 379, shows a survey by Lincoln Mackey. The notes indicate that he found the original corner wood post and bearing trees.

1940 Civilian Conservation Corps notes on Form 874 in United States Forest Service files in Cass Lake, Minnesota, shows a survey by R.T. DeFant. The notes indicate that he found both original Pine stumps. He set a pipe to mark the corner position and placed a Forest Service Location Poster on a 10 inch Oak South 10 degrees West a distance of 29 feet.

1969 United States Forest Service notes for Township 141 North, Range 27 West, in Book 2, Page 62, in United States Forest Service files in Cass Lake, Minnesota, show that United States Forest Service Technicians found burned stumps for both original bearing trees, a 1 inch diameter iron pipe and a 1940 Forest Service Location Poster on ground by Oak. The notes indicate that they set a 2 inch by 5 foot galvanized steel pipe filled with concrete and capped with a 3 inch stamped brass tablet. They also marked the following new bearing trees: a 14 inch White Oak South 22 degrees West a distance of 29 feet; a 5 inch White Oak North 82 degrees West a distance of 27.2 feet; and a 6 inch White Oak North 19 degrees West a distance of 28.2 feet.

1969 William Okerman, Registered Land Surveyor Number 6807, filed an "Affidavit As To Location Of Government Corner" showing the 1969 United States Forest Service information.

1993 on December 11, a Landecker & Associates, Inc. survey crew found the 1969 United States Forest Service steel pipe in good condition. They also found the 1969 bearing trees: the 14 inch White Oak, now 16 inches, South 22 degrees West a distance of 29.00 feet; the 5 inch White Oak, now 6 1/2 inches, North 82 degrees West a distance of 27.20 feet; and the 6 inch White Oak, now 8 inches, North 19 degrees West a distance of 28.20 feet. They found a 6 foot steel sign post North a distance of 4.8 feet and set an 8 foot steel sign post South a distance of 3.0 feet.

Landecker & Associates, Inc. accepts the found iron pipe as a perpetuation of the original corner position.