

CERTIFICATE OF LOCATION OF GOVERNMENT CORNER

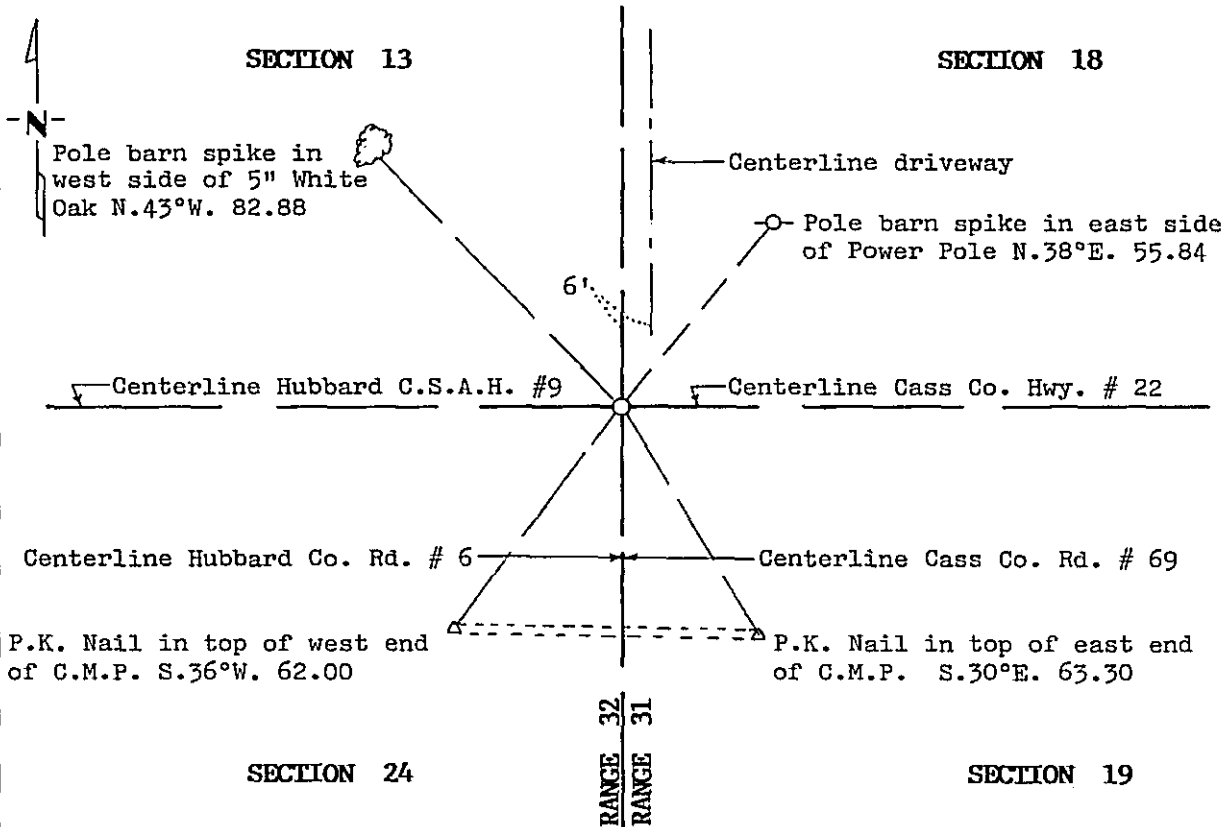
Northwest Corner of Section 19, Township 145, Range 31, 5th P.M.

STATE OF MINNESOTA, County of Cass

At the corner location shown on the sketch:

- On 10/25/93 found a 1/2" Capped pipe, R.L.S. 15483, above a 1" Capped pipe 2.6' below highway surface. Removed 1/2" pipe.
 - left monument as found, lowered monument, removed monument (explain)
- On 10/25/93 placed a Mn/DOT Cast Iron Monument above 1" Capped pipe. Top of monument flush with highway surface.

SKETCH OF REFERENCE TIES



Statement of evidence relative to this corner location is on back of page.

357126

I hereby certify that this survey, plan or report was prepared by me or under my direct supervision and that I am a duly Registered Land Surveyor under the laws of the State of Minnesota.

Robert W. Murray

Date 3-28-94 Registration No. 15483

OFFICE OF THE COUNTY RECORDER
County of CASS

I hereby certify that this document was filed in the Co. Recorders office at 2:30 P.M. on the 26th day of APRIL A.D., 1994

County Recorder Claudia Kuyler
By N.S. GROFF M., Deputy

DOCUMENT NO. 357126

Statement of Evidence:

NORTHWEST CORNER SECTION 19, TOWNSHIP 145 NORTH,
RANGE 31 WEST, FIFTH PRINCIPAL MERIDIAN

1871 The original Public Land Survey was run by George Stuntz. A scribed post was set to mark corner and witness ties were recorded:

- 7" Black Pine N. 70° E. 28 links
- 6" Black Pine S. 20° E. 14 links
- 6" Black Pine S. 73° W. 31 links
- 8" Black Pine N. 70° W. 4 links

1963 Jack D. Salo, RLS, set spike for assumed corner.

1981 Terrance Johnson, RLS, set RR spike at intersection of roads for assumed corner.

1992 Murray Surveying, Inc., did not find RR spike set by Johnson. Dug hole and found 1" capped pipe down 2.6 feet below road surface. Accepted existing monument as northeast corner of Section 24, T.145N., R.32W. and the northwest corner of Section 19, T.145N., R31W.

For information regarding this survey, contact Murray Surveying, Inc., Bemidji, MN.