

CERTIFICATE OF LOCATION OF GOVERNMENT CORNER

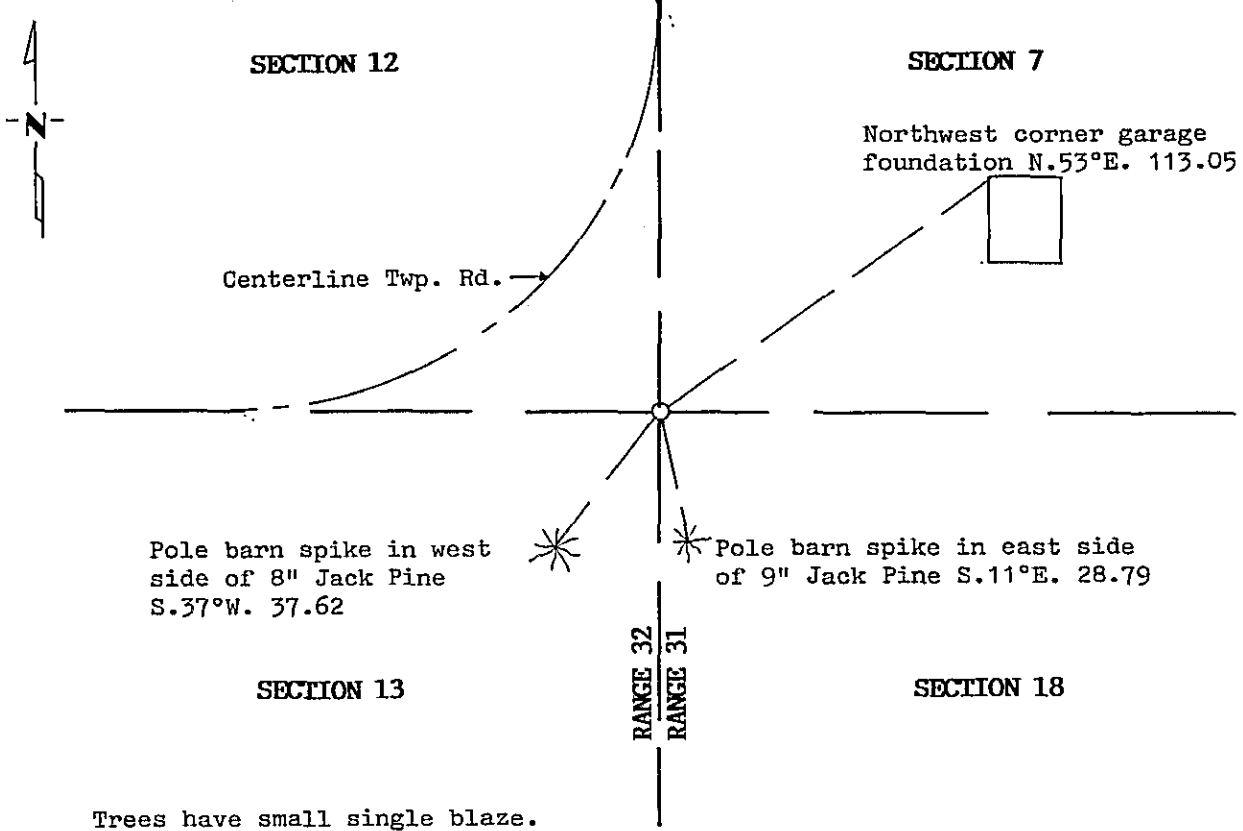
Northwest Corner of Section 18, Township 145, Range 31, 5th P.M.

STATE OF MINNESOTA, County of Cass

At the corner location shown on the sketch:

- On 10/25/93 found a 1" X 35" Square solid iron rod
DATE
- left monument as found, lowered monument, removed monument (explain)
- On 10/25/93 placed a Mn/DOT Cast Iron Monument. Top of monument
DATE 0.2' below surface.

SKETCH OF REFERENCE TIES



Statement of evidence relative to this corner location is on back of page.

357116

I hereby certify that this survey, plan or report was prepared by me or under my direct supervision and that I am a duly Registered Land Surveyor under the laws of the State of Minnesota.

Robert W. Murray

Date 3-28-94 Registration No. 15483

OFFICE OF THE COUNTY RECORDER
 County of CASS

I hereby certify that this document was filed in the Co. Recorders office at 12:50 P.M. on the 26th day of APRIL A.D., 1994

County Recorder Claudine Kaylar

By N.B. MICROELEM, Deputy

DOCUMENT NO. 357116

Statement of Evidence:

NORTHWEST CORNER SECTION 18, TOWNSHIP 145 NORTH,
RANGE 31 WEST, FIFTH PRINCIPAL MERIDIAN

1871 The original Public Land Survey was run by George Stuntz. A scribed post was set to mark corner and witness ties were recorded.

8" Black Pine S. 33° E. 27 links

7" Black Pine N. 75° E. 49 links

9" Black Pine N. 65° W. 7 links

8" Black Pine S. 11° W, 57 links

1943 H. Sorenson of the Minnesota Highway Department conducted a location survey of Trunk Highway 2 and assumed a position for the section corner.

1959 Peter Meyer, RLS, surveyed plat of LITTLE WOLF LOOKOUT in Section 7, Township 145 North, Range 31 West and indicates a monument at section corner.

1980 Okerman Surveying, Inc., searched for and found a 1" square shaft at P.I. of roads and used for section corner.

1989 Murray Surveying, Inc., found 1" square shaft at P.I. of roads and used existing corner for section corner.

1992 Murray Surveying, Inc., found 1" square shaft at P.I. of roads and used existing corner for section corner for subdivision of Section 12.

For information regarding this survey, contact Murray Surveying, Inc., Bemidji, MN.