

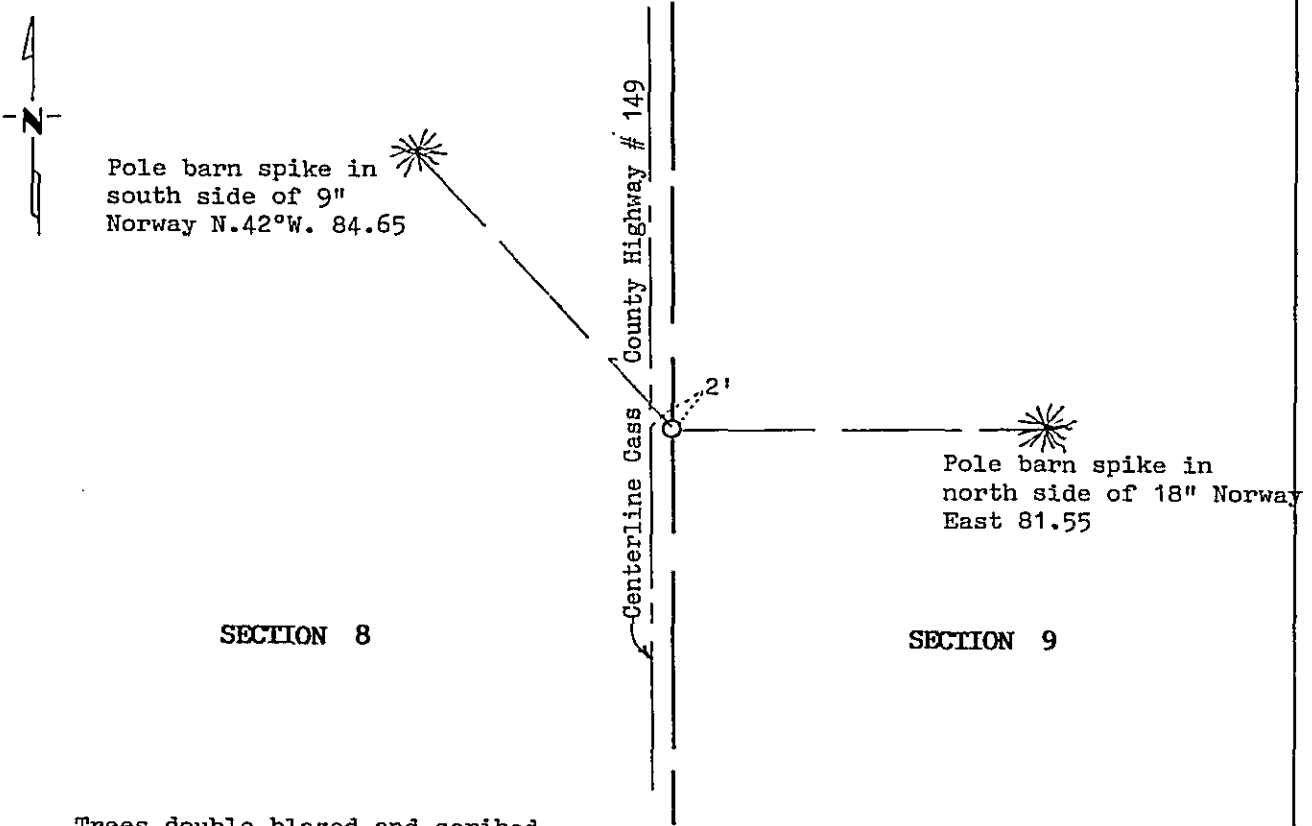
# CERTIFICATE OF LOCATION OF GOVERNMENT CORNER

East Quarter Corner of Section 8, Township 145, Range 31, 5th P.M.  
 STATE OF MINNESOTA, County of Cass

At the corner location shown on the sketch:

- On 10/25/93 found a 1/2" pipe set above the base of a bent 1 1/2" capped pipe.  
DATE  
Removed both pipes, could not straighten 1 1/2" capped pipe so did not reset.  
 left monument as found,  lowered monument,  removed monument (explain)
- On 10/25/93 placed a Mn/DOT Cast Iron Monument in place of removed pipes.  
DATE  
Top of monument flush with highway surface.

### SKETCH OF REFERENCE TIES



Trees double blazed and scribed.

Statement of evidence relative to this corner location is on back of page. 357114

I hereby certify that this document and the data contained herein was prepared by me or under my direct supervision.

Robert W. Murray 3-28-94  
SIGNATURE DATE  
 Registration No. 15483  
 Land Surveyor,  Professional Engineer  
 County Surveyor,  County Engineer

OFFICE OF THE COUNTY RECORDER  
 County of CASS  
 I hereby certify that this document was filed in the Co. Recorders office at 12:30 P.M. on the 26th day of APRIL A.D., 19 94  
 County Recorder Claudia Kaylar  
 By N.B., Deputy  
 DOCUMENT NO. 357114

Statement of Evidence:

NORTH QUARTER CORNER SECTION 8, TOWNSHIP 145 NORTH,  
RANGE 31 WEST, FIFTH PRINCIPAL MERIDIAN

1875 The original Public Land Survey was run by Benjamin c. Baldwin. A scribed post was set to mark corner and witness ties were recorded:

8" Jack Pine N. 72° W. 62 links

6" Jack Pine S. 71° E. 68 links

1906 John Curo set stake from two government bearing trees. ( Survey Record Book A, pages 276-277 )

1910 James Middleton found southeast government bearing tree and set new witness ties as follows: (Survey Record Book B, page 575 )

6" Jack Pine Stub S. 82°16' E. 46.38 feet

4" Cedar Hub S. 49°15' W. 37.49 feet

1913 John Curo found corner previously established and set 1 1/2" x 48" capped iron pipe. Southeast bearing tree stump inplace. ( Survey Record Book D, page 151 )

1914 John Curo plats PINE GROVE CEMETERY. Plat shows corner as a large iron monument set.

1992 Murray Surveying, Inc., found 1 1/2" capped iron pipe under road surface and accepted pipe as east quarter corner of Section 8.

For information regarding this survey, contact Murray Surveying, Inc., Bemidji, MN.