

CERTIFICATE OF LOCATION OF GOVERNMENT CORNER

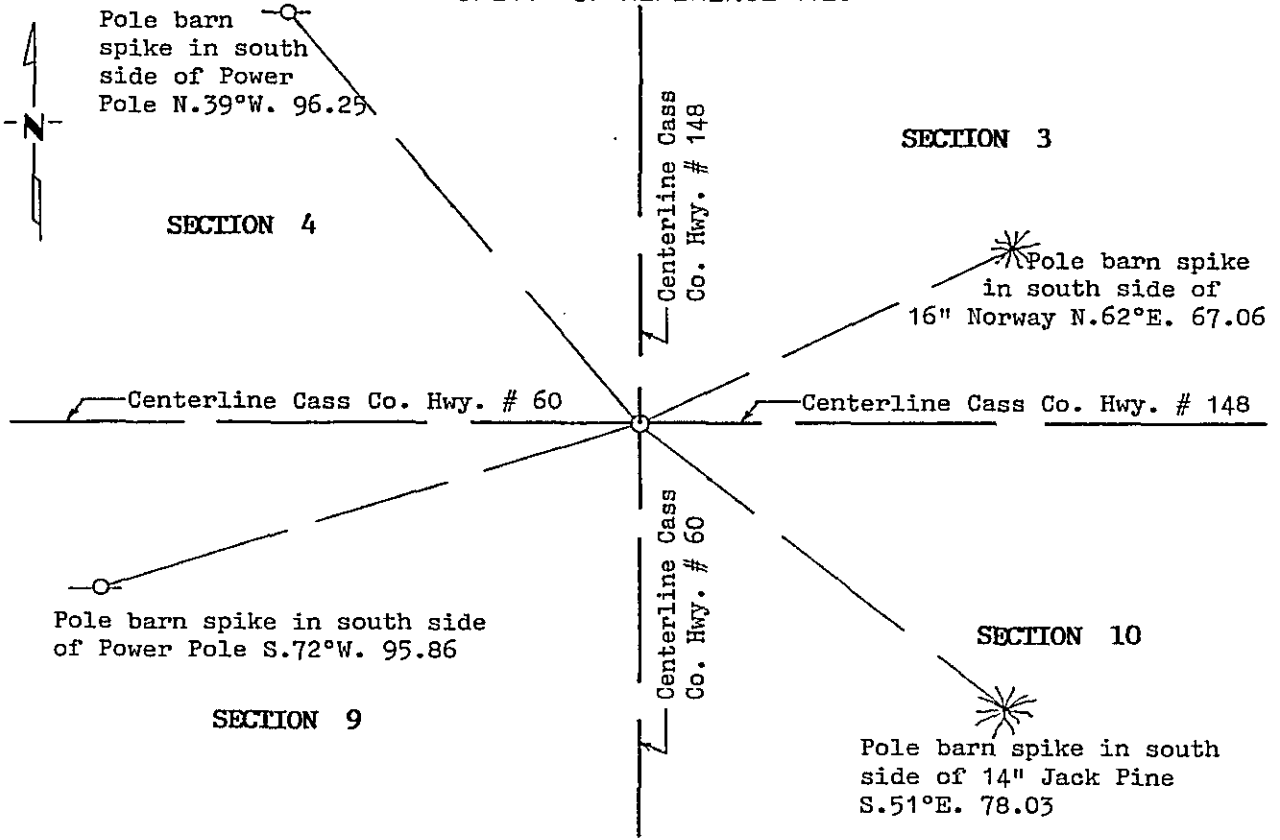
Northeast Corner of Section 9, Township 145, Range 31, 5th P.M.
STATE OF MINNESOTA, County of Cass

At the corner location shown on the sketch:

On 10/25/93 found a 1 1/2" Capped pipe 12" below highway surface.
DATE
 left monument as found, lowered monument, removed monument (explain)

On 10/25/93 placed a Mn/DOT Cast Iron Monument above existing capped
DATE pipe. Top of monument flush with highway surface.

SKETCH OF REFERENCE TIES



Statement of evidence relative to this corner location is on back of page. 357111

I hereby certify that this document and the data contained herein was prepared by me or under my direct supervision.

Robert W. Murray 3-28-94
SIGNATURE DATE

Registration No. 15483
 Land Surveyor, Professional Engineer
 County Surveyor, County Engineer

OFFICE OF THE COUNTY RECORDER
County of CASS

I hereby certify that this document was filed in the Co. Recorders office at 12:00 P. .M. on the 26th day of APRIL A.D., 1994

County Recorder Claudia Kaylar
By N.S. MICROFILM, Deputy
DOCUMENT NO. 357111

Statement of Evidence:

**NORTHEAST CORNER SECTION 9, TOWNSHIP 145 NORTH,
RANGE 31 WEST, FIFTH PRINCIPAL MERIDIAN**

1875 The original Public Land Survey was run by Benjamin C. Baldwin. A scribed post was set to mark corner and witness ties were recorded:

7" Jack Pine S. 66° E. 23 links

8" Jack Pine N. 75° E. 37 links

6" Jack Pine N. 73° W. 134 links

8" Jack Pine S. 82° W. 16 links

1907 John Curo found stake set from government bearing stumps and made an additional witness tie: (Survey Record Book A, page 278-279)

5" Jack Pine S. 63°15' W. 37.40 feet

1913 John Curo set 1 1/2" x 48" capped pipe for corner. (Survey Record Book D, page 152)

1914 John Curo plats PINE GROVE CEMETERY. Plat shows corner as a large iron monument set.

1924 W. E. Lefountain plats SUPPLEMENTAL PLAT OF BUG E ZO WE NING BEACH. Plat indicates corner in place.

1975 Okerman Surveying, Inc., found 1 1/2" capped pipe in road intersection. Accepted iron for northeast corner of Section 9.

1992 Murray Surveying, Inc., found 1 1/2" capped pipe in road intersection and accepted iron for northeast corner of Section 9.

For information regarding this survey, contact Murray Surveying, Inc., Bemidji, MN.