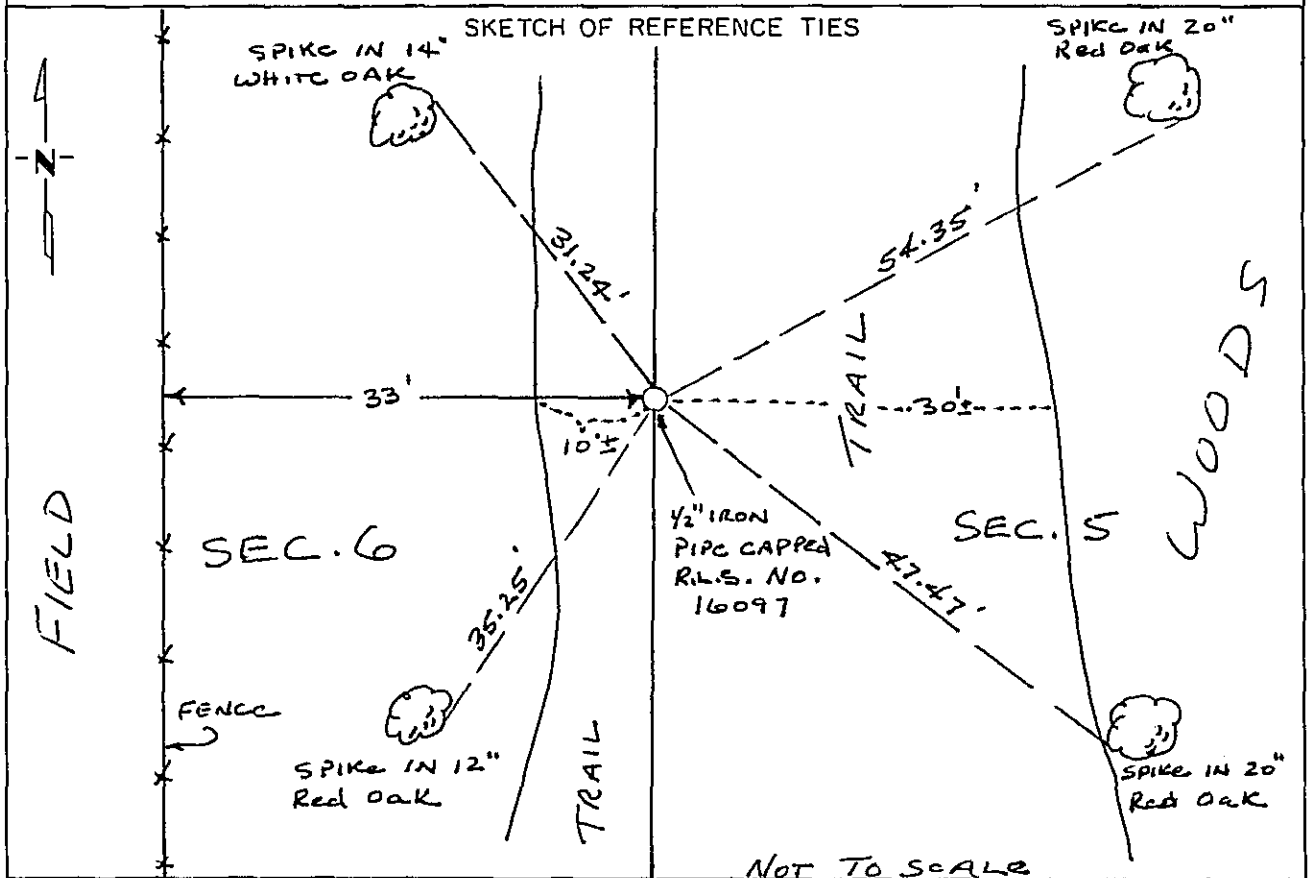


CERTIFICATE OF LOCATION OF GOVERNMENT CORNER

East Quarter _____ Corner of Section 6, Township 134, Range 31, 5th P.M.
STATE OF MINNESOTA, County of Cass

At the corner location shown on the sketch:

- On _____ found a _____
DATE
- left monument as found, lowered monument, removed monument (explain)
- On Oct., 1993 placed a 1/2" iron pipe monument capped RLS No. 16097
DATE



Statement of evidence relative to this corner location is on back of page. 357101

I hereby certify that this document and the data contained herein was prepared by me or under my direct supervision.

[Signature]
SIGNATURE DATE NOV 18, 1994

Registration No. 16097
 Land Surveyor, Professional Engineer
 County Surveyor, County Engineer

OFFICE OF THE COUNTY RECORDER
County of CASS

I hereby certify that this document was filed in the Co. Recorders office at 10:20 A. M. on the 26th day of APRIL A.D., 1994

County Recorder Claudia Kaylar
By N.C. [Signature], Deputy

DOCUMENT NO. 357101

Statement of Evidence:

The East Quarter Corner of Section 6, Township 134, Range 31, 5th Principal Meridian, Cass County, Minnesota, was set under the Public Land Survey as a post with two bearing trees in 1869. No traces of post or bearing trees now exist.

On June 25, 1902, May Township issued a Supervisor's Road Order and laid out by survey a 4 rod road centered on the line between Section 5 and 6, and Sections 7 and 8.

The County Surveyor's Office was contacted and corner card information was obtained.

In 1993, While surveying the perimeter of Section 5, the obliterated position for the west quarter corner of Section 5, being also the east quarter corner of Section 6, was searched at a point at pro-rated distances from the northwest and southwest corners of Section 5, and 33 feet (2 rods) east of a north-south fence line. This area was in a widened field area. No definite road bed was found only a wide wandering trail was observed. No evidence of the corner was found during a hand digging and scanning with a metal detector. A 1/2 inch iron pipe monument capped RLS No. 16097 was set at this obliterated position and is accepted as the position for the east quarter corner of Section 6.