

CERTIFICATE OF LOCATION OF GOVERNMENT CORNER

North Quarter Corner of Section 5, Township 134, Range 31, 5th P.M.

STATE OF MINNESOTA, County of Cass

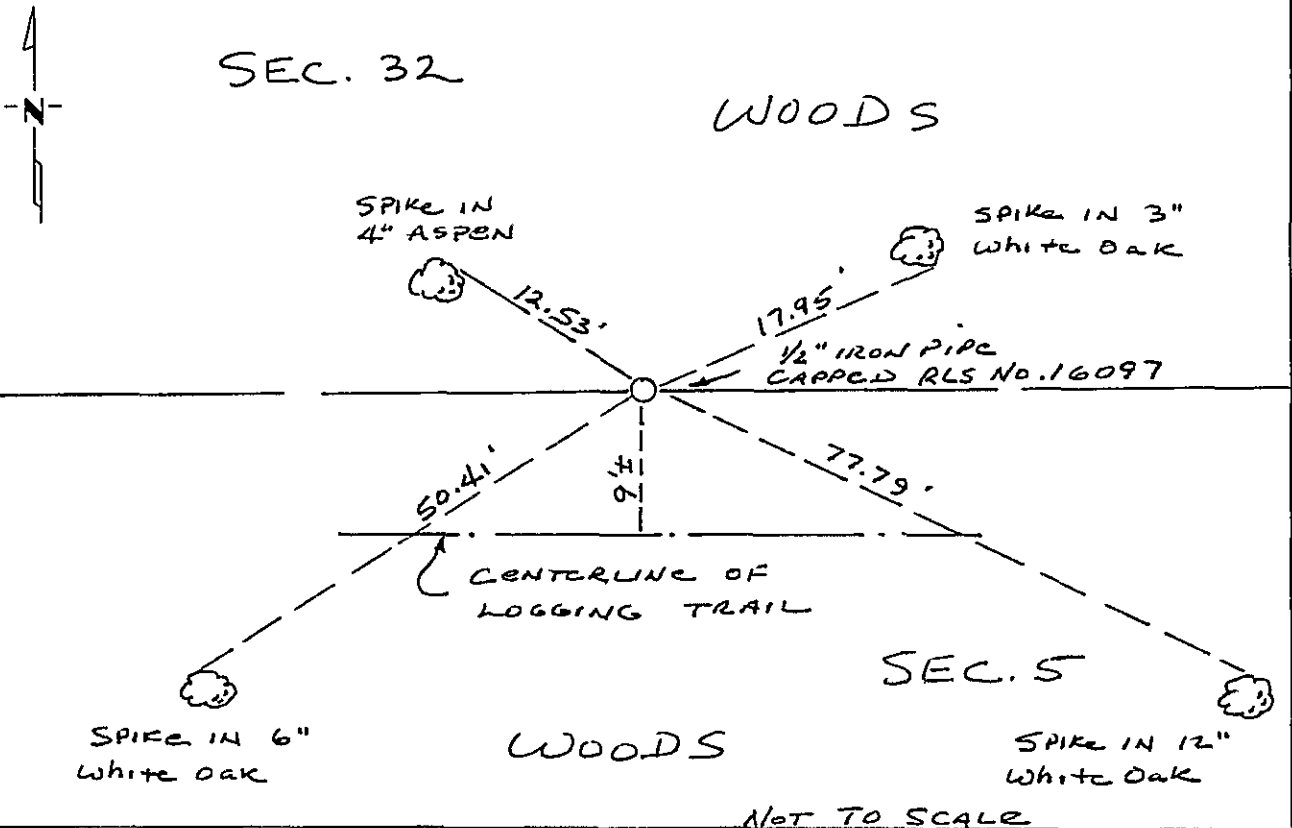
At the corner location shown on the sketch:

On _____ found a _____
DATE

left monument as found, lowered monument, removed monument (explain)

On Oct, 1993 placed a 1/2" iron pipe monument capped RLS No. 16097
DATE

SKETCH OF REFERENCE TIES



Statement of evidence relative to this corner location is on back of page.

357099

I hereby certify that this document and the data contained herein was prepared by me or under my direct supervision.

Thomas P. Johnson
SIGNATURE

April 19, 1994
DATE

Registration No. 16097

Land Surveyor, Professional Engineer

County Surveyor, County Engineer

OFFICE OF THE COUNTY RECORDER
County of CASS

I hereby certify that this document was filed in the Co. Recorders office at 10:00 A. M. on the 26th day of APRIL A.D., 1994

County Recorder Claudine Kaylan
By N.B. [Signature], Deputy

DOCUMENT NO. 357099

Statement of Evidence:

The North Quarter corner of Section 5, Township 134, Range 31, 5th Principal Meridian, Cass County, Minnesota, was set under the Public Land Survey as a post with two bearing trees in 1858. No trace of post or bearing trees now exist.

The County Surveyor's Office was contacted and corner card information was obtained.

In 1993, while survey the perimeter of Section 5, the lost position for the north quarter corner of Section 5 was searched at a point on line and equidistant from the northeast and northwest corners of Section 5. No evidence was found during a scanning of the area with a metal detector and a probe with a shovel. A 1/2" iron pipe monument capped RLS No. 16097 was set at this lost position and is accepted as the north quarter corner of Section 5.