

# CERTIFICATE OF LOCATION OF GOVERNMENT CORNER

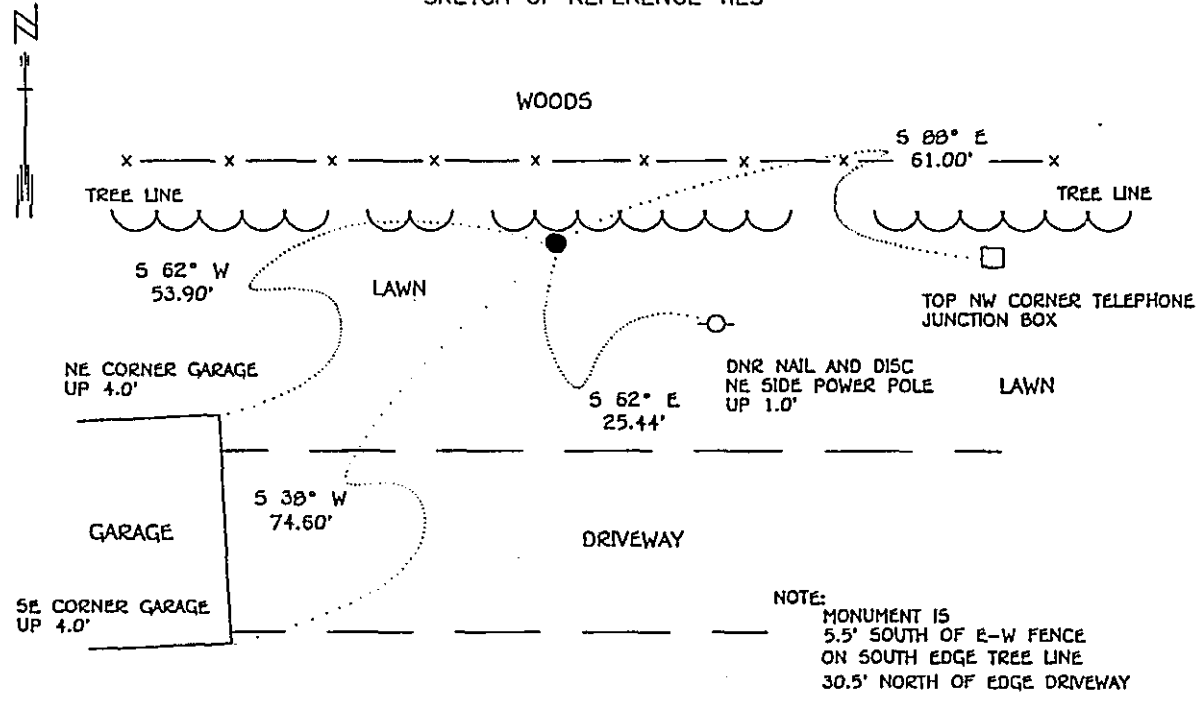
NORTH QUARTER Corner of Section 18, Township 134 N, Range 29 W, 5th P.M.

STATE OF MINNESOTA, County of CASS

At the corner location shown on the sketch:

- On 9-2-93 found a 3/4" INSIDE DIAMETER IRON PIPE STAMPED "1/4 CORNER"  
DATE DOWN 0.4'
- left monument as found,       lowered monument,       removed monument (explain)
- On \_\_\_\_\_ Placed a \_\_\_\_\_  
DATE

## SKETCH OF REFERENCE TIES



### BEARINGS OBSERVED WITH COMPASS

Statement of evidence relative to this corner location is on back of page.

J.B.M. SEPT 1993  
SFT00039.05.00.01

I hereby certify that this document and the data contained herein was prepared by me or under my direct supervision.

Lowell R. Pomeroy SIGNATURE      10-7-93 DATE

Registration No. 17005  
 Land Surveyor,       Professional Engineer  
 County Surveyor,       County Engineer

OFFICE OF THE COUNTY RECORDER 351909  
County of CASS

I hereby certify that this document was filed in the Co. recorders office at 4:08 P.M. on the 14th day of October A.D., 1993  
County Recorder Claudine Kayler  
By N.S., Deputy  
DOCUMENT NO. 351909

## North Quarter Corner Section 18, Township 134 North, Range 29 West

The DNR Bureau of Engineering contacted the following offices for information on this corner:

MN Secretary of State  
Cass County Recorder  
Widseth Smith Nolting at Brainerd  
Landecker & Associates at Pequot Lakes

- 1865 The U.S General Land Office notes, on file in the Secretary of State's Office show the corner is marked with a wood and marked the following bearing trees:  
Aspen 5" S 35° E 82 links, Aspen 6" N 82° W 117 links
- 1968 A Certificate of Survey by Dean Anderson, RLS #3091, shows the south line of Section 7, but no mention of this corner is made.
- 1973 A Certificate of Survey by Dean Anderson, RLS #3091, shows the south line of Section 7, particularly the south line of the SE1/4 SW1/4, but no mention of this corner is made. A found iron pipe is shown on the south line being 1129.60 ft from the southwest corner of said SE1/4 SW1/4.
- 1976 The recorded plat of WESTWOOD, done by Delbert Rieke RLS #5094, shows the north line of Section 18, but does not show this corner. This plat is located in the SE1/4 SW1/4 of Section 7.
- 1979 The recorded plat of ARROWHEAD FLATS, done by Myron Landecker RLS #7452, shows this corner as a iron monument found. Corner is shown to measure:  
2634.70 ft. from the northwest corner Section 18.
- 1987 A Certificate of Survey, done by David Landecker RLS #17008, shows a found monument at this corner. Monument is shown to measure:  
384.20 ft from MC #57.
- 1993 A Certificate of Survey, done by David Landecker RLS #17008, shows a found monument at this corner. Monument is shown to measure:  
384.18 ft. from MC #57.
- 1993 The DNR Bureau of Engineering conducted a search for this corner and found a 3/4" iron pipe with a lath marked 1/4 Cor. No evidence of the government bearing trees were found. Iron pipe was found to measure:  
384.21 ft. from MC #57  
2635.32 ft. from the northwest corner Section 18

Analysis of the available information led the DNR Bureau of Engineering to conclude that the iron pipe marks the practical location of the corner. Although its origin could not be traced, it has been used as the corner in previous surveys.