

# CERTIFICATE OF LOCATION OF GOVERNMENT CORNER

NORTH QUARTER Corner or Section 26 , Township 140 , Range 29 , 5th P.M.

STATE OF MINNESOTA, County of CASS

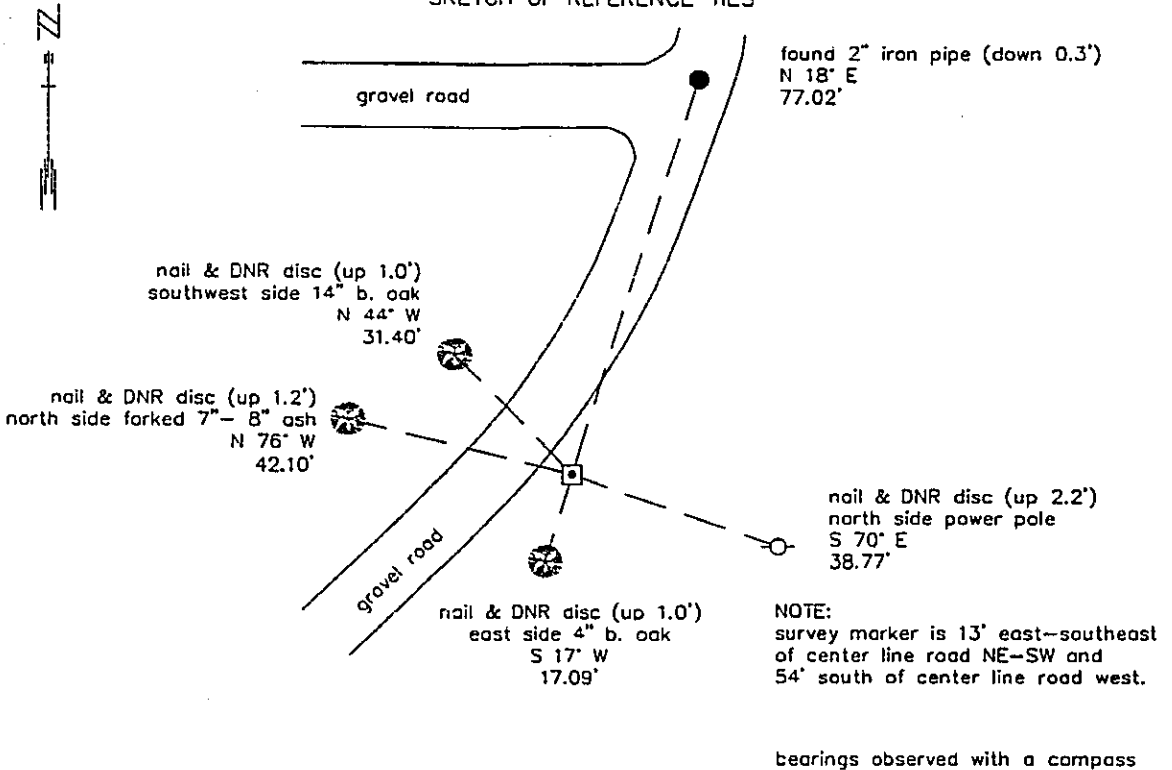
At the corner location shown on the sketch:

On \_\_\_\_\_ found a \_\_\_\_\_  
DATE

left monument as found,       lowered monument,       removed monument (explain)

On 7-9-91 Placed a 3/4" X 24" REBAR WITH AN ALUMINUM CAP STAMPED: "DNR SURVEY  
DATE MARKER" (FLUSH) IN BOTTOM OF DITCH.

### SKETCH OF REFERENCE TIES



Statement of evidence relative to this corner location is on back of page.

8-21-91  
WMA 00355

343681

I hereby certify that this document and the data contained herein was prepared by me or under my direct supervision.

John D. Walker      3-26-92  
SIGNATURE      DATE

Registration No. 16098

Land Surveyor,       Professional Engineer  
 County Surveyor,       County Engineer

OFFICE OF THE COUNTY RECORDER  
County of Cass

I hereby certify that this document was filed in the Co. recorders office at 3:45 P. M. on the 10 day of December A.D., 1992  
County Recorder Claudine Kayler  
By (M) , Deputy  
DOCUMENT NO. 343681

North Quarter Corner Section 26, Township 140 North, Range 29 West

The DNR Bureau of Engineering contacted the following for survey information:

Minnesota Secretary of State's Office  
Cass County Surveyor's Office  
Gary Stevenson, RLS, Walker, MN  
Walt Curo, RLS, Hackensack, MN  
Roger Mustonen, RLS, Hackensack, MN

- 1870 This corner was established by the U.S. General Land Office marked with a post and witnessed by the following bearing trees:  
Basswood, 5" North  $45^{\circ}$  East, 25 links (16.5')  
Blk Oak, 5" South  $12^{\circ}$  East, 25 links (16.5')
- 1952 November, In survey record no. 652, County Surveyor, Harold Curo, states that he drove a 2" by 30" iron pipe at the "true point for the 1/4 corner", but no information is given as to how this position was arrived at.
- 1960 June, A field crew for the Department of Natural Resources, Bureau of Engineering (hereinafter referred to as the DNR-BOE), found an iron pipe in the vicinity of the quarter corner.
- 1982 August, A DNR-BOE field crew found a bent over 2" iron pipe down 0.3 of a foot with a 1/2" iron pipe along side. The 2" iron pipe is 73.7 feet north of the section line.
- 1983 A position for the quarter corner was computed lost between the section corners east and west.
- 1991 July, A survey marker was set at the computed position and ties were taken as shown on the face of this certificate.