

CERTIFICATE OF LOCATION OF GOVERNMENT CORNER

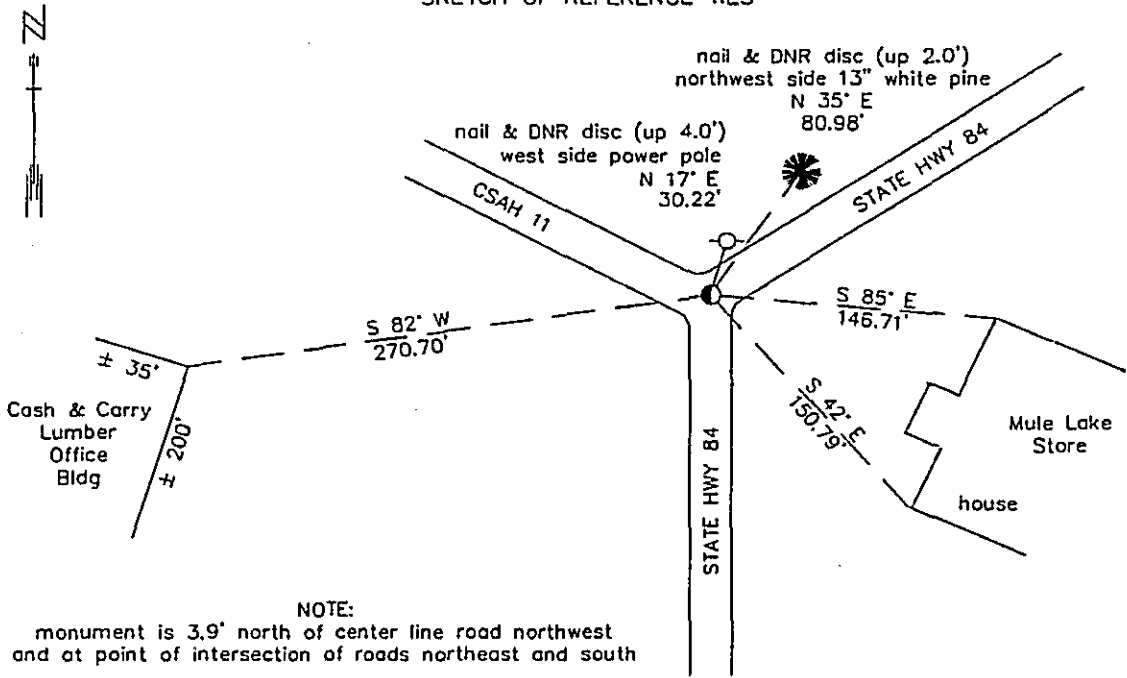
NORTHEAST Corner of Section 25, Township 140, Range 29, 5th P.M.

STATE OF MINNESOTA, County of CASS

At the corner location shown on the sketch:

- On 7-8-91 found a 1" IRON ROD (DOWN 0.2')
DATE
- left monument as found. lowered monument, removed monument (explain)
- On _____ Placed a _____
DATE

SKETCH OF REFERENCE TIES



bearings observed with a compass

Statement of evidence relative to this corner location is on back of page. 8-21-91
WMA 00355

343680

I hereby certify that this document and the data contained herein was prepared by me or under my direct supervision.
John D. Walker 3-28-92
SIGNATURE DATE

Registration No. 16098
 Land Surveyor, Professional Engineer
 County Surveyor, County Engineer

OFFICE OF THE COUNTY RECORDER
County of Cass

I hereby certify that this document was filed in the Co. recorders office at 3:40 P. M. on the 10 day of December A.D., 1992
County Recorder Clairine Kaylor
By ms Deputy
DOCUMENT NO. 343680

Northeast Corner Section 25, Township 140 North, Range 29 West

The DNR Bureau of Engineering contacted the following for survey information:

Minnesota Secretary of State's Office
Cass County Surveyor's Office
Gary Stevenson, RLS, Walker, MN
Walt Curo, RLS, Hackensack, MN
Roger Mustonen, RLS, Hackensack, MN

- 1864 This corner was established by the U.S. General Land Office marked with a post and witnessed by the following bearing trees:
R. Maple, 10" North 51° East, 16 links (10.56')
R. Maple, 7" North 3° West, 46 links (30.36')
R. Maple, 8" South 15° East, 57 links (37.62')
Basswood, 10" South 8° West, 53 links (34.98')
- 1916 July, Deputy County Surveyor, E. B. Horst, conducted a road survey through Section 19 and Section 30, Township 140 North, Range 28 West, as recorded in Book B on pages 121-127. At this corner location he found a post previously set by John W. Curo, County Surveyor.
- 1917 August, E. B. Horst finds a 2" x 48" iron monument badly bent. Horst resets the monument per previously established bearing trees. The record of his work is recorded in Book C on page 80.
- 1920 Mn/DOT highway plans for job No. 2004 show the corner to be located at PI 1000 + 78.9 with two new BT's taken.
- 1981 County Surveyor, G. H. Stevenson, found a railroad spike in the highway.
- 1982 August, A field crew of the Department of Natural Resources, Bureau of Engineering found a 1 inch iron rod down 0.2 of a foot, 4 feet north of center line of County State Aid Highway 11, and in line with the center line of State Highway 84.
- The iron rod is accepted as the section corner.
- 1991 Ties were taken as shown on the face of this certificate.