

CERTIFICATE OF LOCATION OF GOVERNMENT CORNER

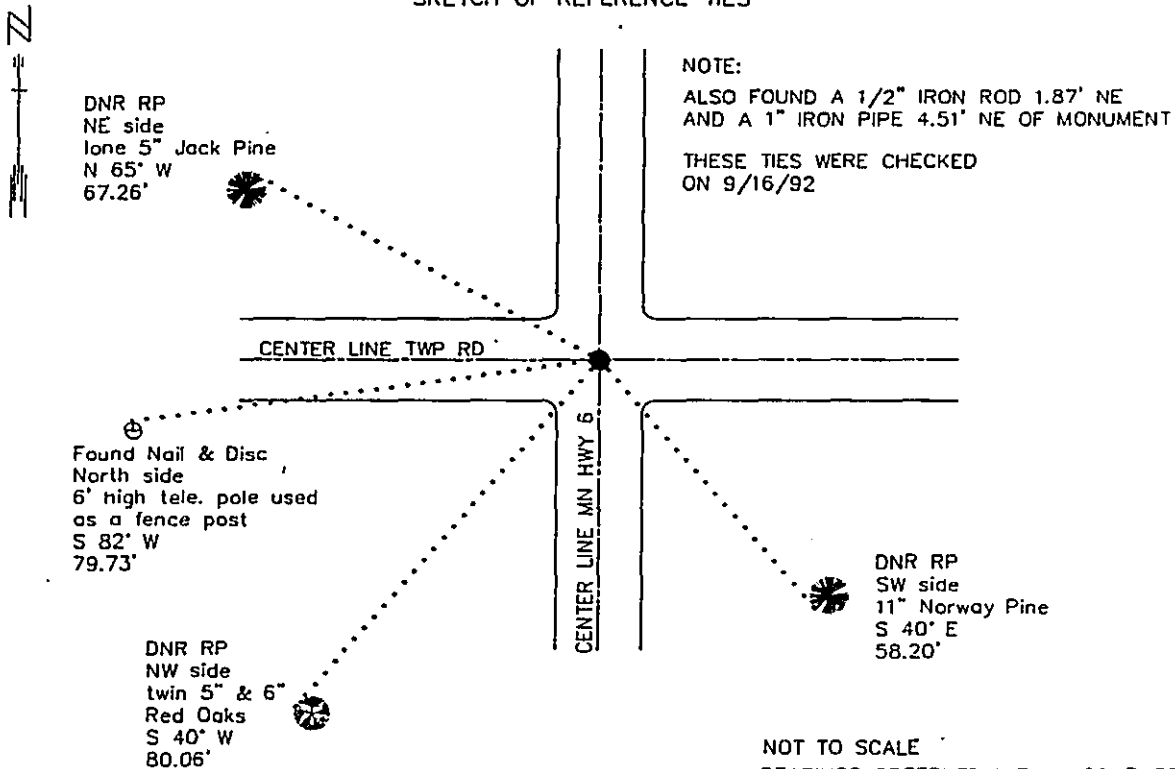
NORTHEAST Corner of Section 34 Township 140 N Range 26 W 5th P.M.

STATE OF MINNESOTA, County of CASS

At the corner location shown on the sketch:

- On 12/8/83 found a 1 1/2" iron pipe (down 1.9') in center line N-S road.
DATE
- left monument as found, lowered monument, removed monument (explain)
- On 12/8/83 Placed a 3/4" x 24" iron rod (down 0.1') over iron pipe.
DATE

SKETCH OF REFERENCE TIES



Statement of evidence relative to this corner location is on back of page. DATE 10/29/92
FILE SFT00031

I hereby certify that this document and the data contained herein was prepared by me or under my direct supervision.

John D. Walker 12-3-92
SIGNATURE DATE

Registration No. 16098

Land Surveyor, Professional Engineer
 County Surveyor, County Engineer

343674

OFFICE OF THE COUNTY RECORDER
County of Cass

I hereby certify that this document was filed in the Co. recorders office at 3:10 P. M. on the 10 day of December A.D., 1992

County Recorder Clairine Kaylor
By MS Deputy

DOCUMENT NO. 343674

Northeast Corner Section 34, Township 140 North, Range 26 West

The following offices where contacted for information on this corner:

Minnesota Secretary of State
Minnesota Department of Transportation
Cass County Surveyor
Wallace F. Buckler, RLS
Gary Stevenson & Associates
AMI Surveyors & Mappers
Widseth, Smith, Nolting, & Associates
Walt Curo Surveying

- 1871 This corner was originally established by the U.S. General Land office survey. The government notes show the corner marked with a post and witnessed by the following bearing trees:
18" White Pine, S. 9° E., 142 links (93.7')
18" White Pine, S. 7° W., 137 links (90.4')

Date
???? Survey Record No. 256 (pgs. 88-89 of County Survey Record Book "B") of State Rural Highway No. 83, by George A. Ralph shows a distance of 2646' to the quarter corner north.

The following information is from the Cass County Land Record sheet:

1915, Book "B", Pgs. 528-529, John Greene found old Govt. B.T. stumps SE and SW. A piece of rack tooth was set. Ties: 5" Norway Pine, S. 5° E., 128.8', 28" White pine stump, S. 60° W., 121.4'.

- 1953 Information on microfilm (Book 239, Page 123) in the Cass County Surveyor's office has a survey by Mr. Curo that shows an iron at the section corner with a distance of 2649.83' to a spike at the quarter corner north.

1964 The Plat of JOHANNESHOHN LOTS by Dean Anderson, RLS, shows the section corner in place with a distance of 1371.6' west to the NE corner of Lot 1.

1971 R.F. Schneider, RLS, shows a 1 1/2" iron pipe in place at the section corner with a distance of 2647.27' to the quarter corner north. Mr. Schneider shows a distance of 1372.15' west to a 2" pipe in place at the NE corner of Lot 1, JOHANNESHOHN LOTS.

1972 Plat of Survey in Gov't. Lots 4 and 5 by Wallace F. Buckler, shows an iron monument found at the section corner with a distance of 2646.40' to the quarter corner north.

1981 On a sketch of his data, Mr. Buckler shows a 1 1/2" pipe at the section corner with a distance of 1371.92' west to a pipe at the NE corner of Lot 1, JOHANNESHOHN LOTS.

Date
???? Highway Right-of-way map shows an iron monument in place at the section corner, southwest of P.I. 465+39.2.

1983 The DNR Bureau of Engineering found a 1 1/2" iron pipe in center line MN Hwy. 6, 1.87' SW of a 1/2" iron rod at Hwy. P.I. 465+39.2, and 4.51' SW of a 1" iron pipe. The remains of a large White Pine stump were found S. 69° W., 119.9'. A distance of 1372.49' was measured to a 1 1/4" iron pipe found at the NE corner of Lot 1, JOHANNESHOHN LOTS.
The 1 1/2" iron pipe was accepted as marking the section corner. An iron rod was set over the pipe to further perpetuate the corner's position.

For information regarding this survey, contact the MN Department of Natural Resources, Bureau of Engineering, Survey Section, 500 Lafayette Road, St. Paul, MN 55155-4029