

CERTIFICATE OF LOCATION OF GOVERNMENT CORNER

North Quarter Corner of Section 28, Township 141, Range 31, 5th P.M.

STATE OF MINNESOTA, County of Cass

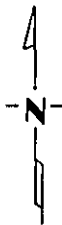
At the corner location shown on the sketch:

- On _____ found a _____
DATE
- left monument as found, lowered monument, removed monument (explain)
- On 12/2/92 placed a 2 inch by 48 inch iron monument with brass
DATE
cap

Magnetic Decl: 5° East
 Not to Scale

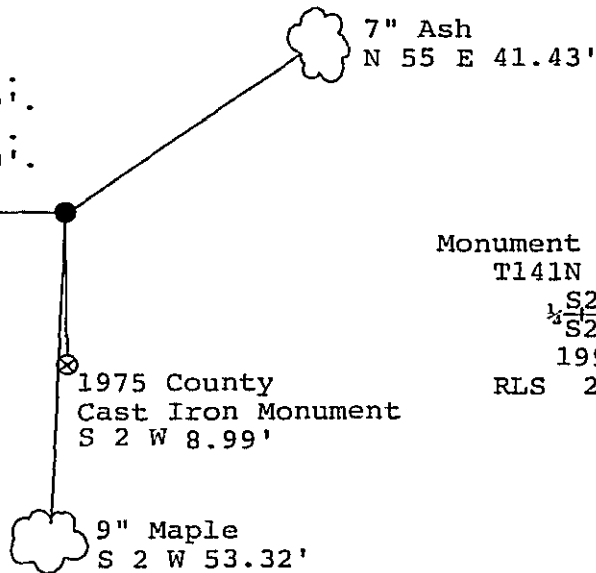
SKETCH OF REFERENCE TIES

All distances are horizontal to nail in side of tree.



8' steel sign post West 3.63'.
 8' steel sign post North 2.79'.
 8' steel sign post East 3.12'.
 8' steel sign post South 3.30'.

12" Burr Oak
 West 11.19'



Monument Stamped:
 T141N R31W
 S21
 S28
 1992
 RLS 21367

All bearing trees are scribed, painted with red enamel and marked with a 54-3 (bearing tree) tag.

Statement of evidence relative to this corner location is on back of page. 343562

I hereby certify that this survey, plan or report was prepared by me or under my direct supervision and that I am a duly Registered Land Surveyor under the laws of the State of Minnesota.

Terry L. Freeman
 Terry L. Freeman
 Date 12/8/92 Registration No. 21367

OFFICE OF THE COUNTY RECORDER

County of Cass

I hereby certify that this document was filed in the Co. Recorders office at 3:35 P.M. on the 8 day of December A.D., 1992

County Recorder Claudia Koyler

By M.J., Deputy

DOCUMENT NO. 343562

Statement of Evidence:

North Quarter corner, Section 28, Township 141 North,
Range 31 West, Cass County, Minnesota

R-11

1873 P.H. Conger, U.S. Deputy Surveyor, originally established this corner position while subdividing Township 141 North, Range 31 West. The notes indicate that he set a wood post and marked the following bearing trees: a 9 inch Burr Oak North 60 degrees East a distance of 37 links (24.42 feet); and a 5 inch Burr Oak South 70 degrees West a distance of 19 links (12.54 feet).

1975 R.F. Schneider, Registered Land Surveyor Number 5740, set a 4 inch cast iron County monument at the single proportion position and marked the following bearing trees: a 10 inch White Oak North 50 degrees West a distance of 14.0 feet; a 5 inch Maple North 70 degrees West a distance of 3.26 feet; and a 4 inch Maple South 25 degrees East a distance of 14.17 feet. He filed a Certificate of Location of Government Corner showing this information. The notes are in his Book 37, page 50, on file in the office of Landecker & Associates of Walker, Inc.

1992 on June 3, a Landecker & Associates of Walker, Inc., survey crew found the cast iron monument as set in 1975 and bearing trees in good condition. No evidence was found of the original bearing trees.

1992 on December 2, a Landecker & Associates of Walker, Inc., survey crew set a 2 inch by 48 inch iron monument with brass cap at the lost, single proportion position between the Northwest and Northeast corners of Section 28 (see note below). New bearing trees were marked as shown and steel sign post set as noted on front of this certificate.

Note: This corner position is different than that monumented by R.F. Schneider in 1975 due to the recovery of the obliterated position of the true original corner at the Northwest corner of Section 21 from which the Southwest corner of Section 21 was then re-established by double proportion methods. The 1975 survey used a different double proportion position.