

CERTIFICATE OF LOCATION OF GOVERNMENT CORNER

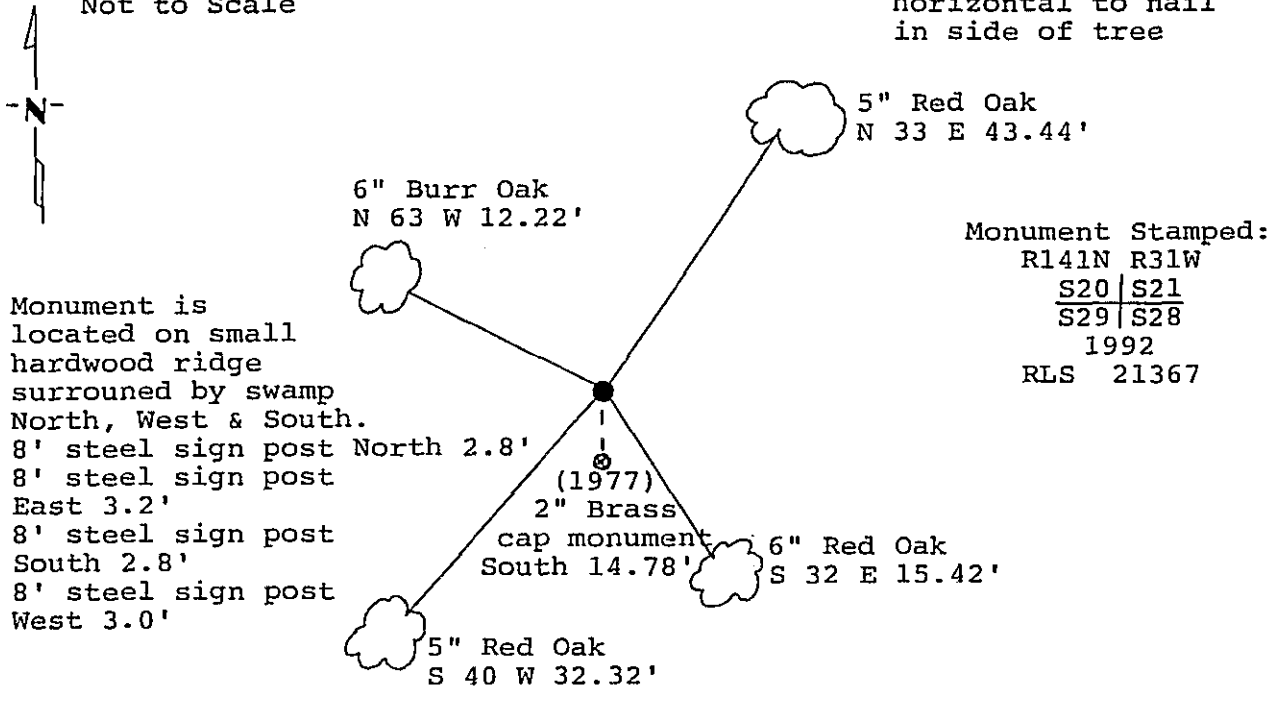
Northeast Corner of Section 29, Township 141, Range 31, 5th P.M.

STATE OF MINNESOTA, County of Cass

At the corner location shown on the sketch:

- On _____ found a _____
DATE _____
- left monument as found, lowered monument, removed monument (explain)
- On 11/16/92 placed a 2 inch by 48 inch iron monument with brass
DATE cap up 14 inches.

Magnetic Decl: 5° East SKETCH OF REFERENCE TIES All distances are horizontal to nail in side of tree
Not to Scale



All bearing trees are scribed, painted with red enamel and marked with a 54-3 (bearing tree) tag.

Statement of evidence relative to this corner location is on back of page. 343561

I hereby certify that this survey, plan or report was prepared by me or under my direct supervision and that I am a duly Registered Land Surveyor under the laws of the State of Minnesota.

Terry L. Freeman
Terry L. Freeman
Date 12/8/92 Registration No. 21367

OFFICE OF THE COUNTY RECORDER
County of Cass

I hereby certify that this document was filed in the Co. Recorders office at 3:30 P.M. on the 8 day of December A.D., 1992

County Recorder Chondra Kayler
By MJ, Deputy
DOCUMENT NO. 343561

Statement of Evidence:

Northeast corner, Section 29, Township 141
North, Range 31 West, Cass County, Minnesota

R-9

1873 P.H. Conger, U.S. Deputy Surveyor, originally established this corner position while subdividing Township 141 North, Range 31 West. The notes indicate that he set a wood post and marked the following bearing trees: a 7 inch Birch North 70 degrees East a distance of 27 links (17.82 feet); a 10 inch Birch South 60 degrees West a distance of 34 links (22.44 feet); an 8 inch Poplar North 50 degrees West a distance of 19 links (12.54 feet); a 5 inch Poplar South 30 degrees East a distance of 75 links (49.50 feet).

1975 on April 30, R.F. Schneider, Registered Land Surveyor Number 5740, searched for corner. The notes in his Book 37, page 52, indicate that he found no evidence.

1977 R.F. Schneider, Registered Land Surveyor Number 5740, surveyed for the plat of Million Lake for the United States Forest Service. The notes for Township 141 North, Range 31 West, in Book 1, page 72, indicate that United States Forest Service employee, C. Krause, set a 5 foot concrete filled, galvanized iron pipe with stamped brass cap and marked the following bearing trees: a 9 inch White Oak South 23 degrees West a distance of 70.45 feet; an 11 inch White Oak South 23 degrees East a distance of 84.59 feet; a 9 inch White Oak North 86 degrees East a distance of 110.60 feet; and a 5 inch White Oak North 20 degrees West a distance of 50.65 feet. R.F. Schneider filed a corner certificate.

1987 on February 6, United States Forest Service notes for Township 141 North, Range 31 West, Book 1, page 72, show that technicians found the 2 inch monument in place and all bearing trees alive and in good condition.

1992 on July 16, a Landecker & Associates of Walker, Inc., survey crew found United States Forest Service monument and 1977 ties.

1992 on November 16, a Landecker & Associates of Walker, Inc., survey crew set a 2 inch by 48 inch iron monument with brass cap up 14 inches at the lost, double proportion position between the Northwest corner of Section 21, the Southwest corner of Section 28 and the Northwest corner of Section 29 and the Northeast corner of Section 28 (see note below). New bearing trees were marked as shown and steel sign posts set as noted on front of this certificate.

Note: This corner position is different than that monumented by the United States Forest Service in 1977 due to the recovery of the obliterated position of the true original corner at the Northwest corner of Section 21. The 1977 monument was established by double proportion methods from the Northwest corner of Section 16, while this 1992 position is from the Northwest corner of Section 21.