

CERTIFICATE OF LOCATION OF GOVERNMENT CORNER

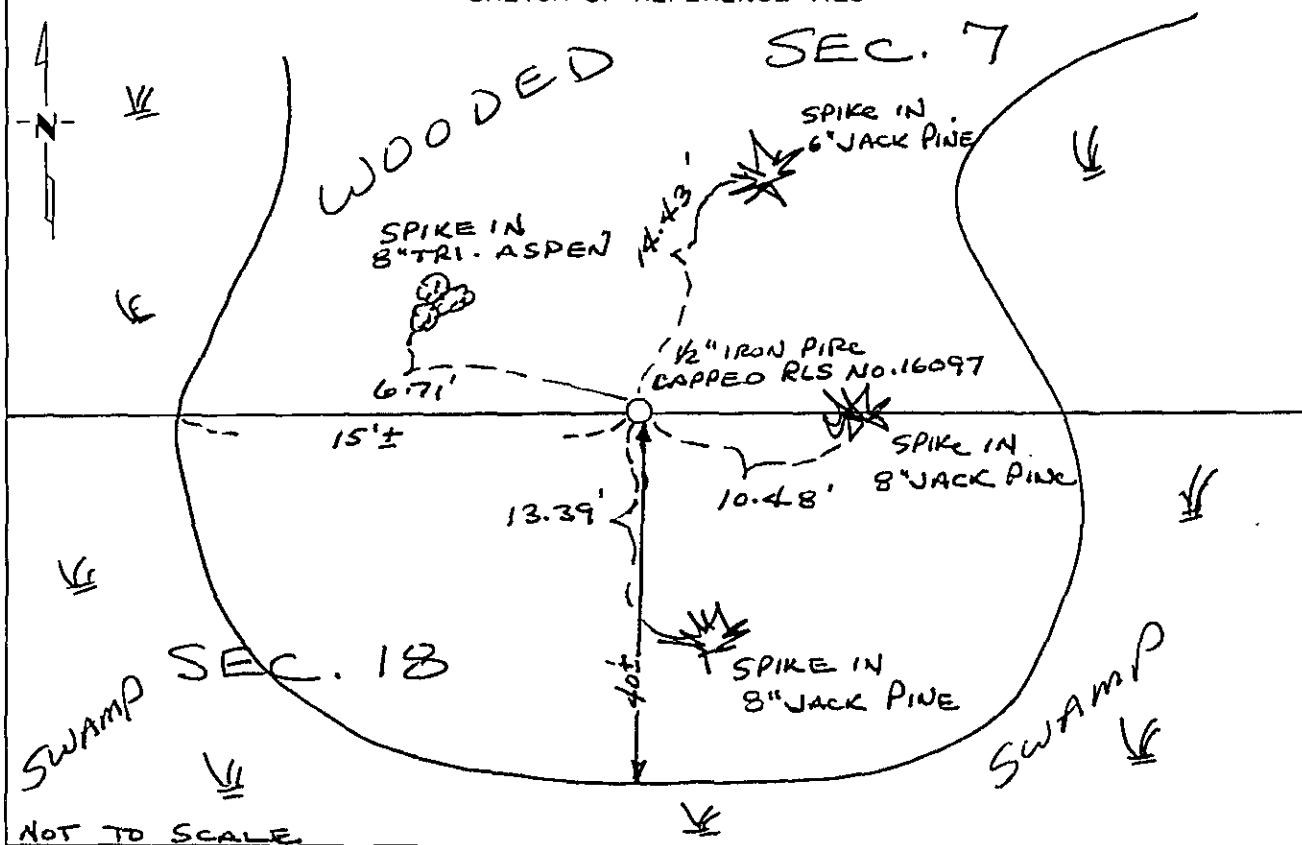
North Quarter Corner of Section 18, Township 134, Range 32, 5th P.M.

STATE OF MINNESOTA, County of Cass

At the corner location shown on the sketch:

- On _____ found a _____
- DATE
- left monument as found, lowered monument, removed monument (explain)
- On 10-12-91 placed a 1/2" iron pipe monument capped RLS No. 16097
- DATE

SKETCH OF REFERENCE TIES



Statement of evidence relative to this corner location is on back of page. 343237

I hereby certify that this document and the data contained herein was prepared by me or under my direct supervision.

Thomas J. Heenan Nov. 14, 1992
SIGNATURE DATE

Registration No. 16097

Land Surveyor, Professional Engineer

County Surveyor, County Engineer

OFFICE OF THE COUNTY RECORDER
 County of Cass

I hereby certify that this document was filed in the Co. Recorders office at 2:35 P.M. on the 24 day of November, A.D., 1992

County Recorder Chadwick Kaylor
 By M.S., Deputy

DOCUMENT NO. 343237

Statement of Evidence:

The North Quarter Corner of Section 18, Township 134, Range 32, 5th Principal Meridian, Cass County, Minnesota, was set in 1870, under the Public Land Survey as a post with 2 bearing trees. No. evidence of the post or bearing trees was found.

A search of County records revealed no additional data.

In 1991 and 1992, while subdividing Section 7, Thomas P. Thiessen, RLS No. 16097, searched the area of the North Quarter Corner of Section 18, at the lost position and found nothing. On Dec. 12, 1991, a 1/2 inch iron pipe capped RLS No. 16097, was placed at the lost position and is accepted as the position for the North Quarter Corner of Section 18.