

CERTIFICATE OF LOCATION OF GOVERNMENT CORNER

Northeast Corner of Section 4, Township 139, Range 27, 5th P.M.

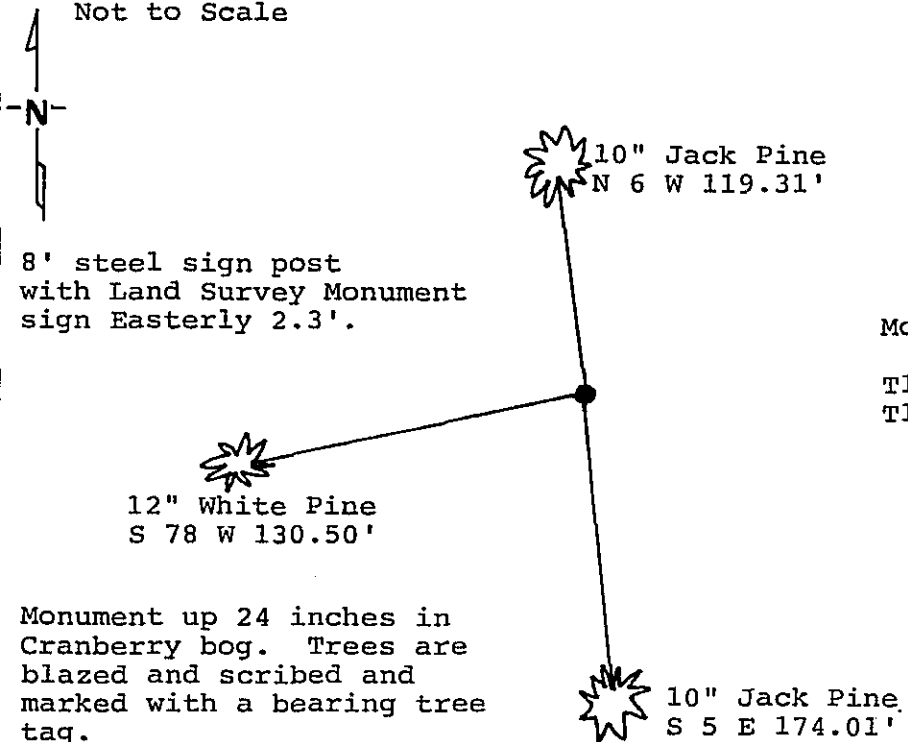
STATE OF MINNESOTA, County of Cass

At the corner location shown on the sketch:

- On 4/4/91 found a 3" x 3" wood post up 30" next to rotted wood post
DATE
 left monument as found, lowered monument, removed monument (explain)
- On 4/9/91 placed a 5' rod with 3' stabilizer and aluminum cap
DATE

Magnetic Decl: 5° East SKETCH OF REFERENCE TIES
 Not to Scale

All distances are horizontal to nail in side of tree



Monument Stamped
 R27W
 T140N S33|S34
 T139N S 4|S 3
 1991
 RLS 17008

Statement of evidence relative to this corner location is on back of page. 329228

I hereby certify that this document and the data contained herein was prepared by me or under my direct supervision

[Signature] SIGNATURE 6/10/91 DATE

Registration No. 17008
 Land Surveyor, Professional Engineer
 County Surveyor, County Engineer

OFFICE OF THE REGISTER OF DEEDS
 County of Cass

I hereby certify that this document was filed in the Reg. of Deeds office at 4:05 P. M. on the 11 day of June A.D., 1991

Register of Deeds [Signature]
 By m Deputy

DOCUMENT NO. 329228

Northeast corner of Section 4, Township 139
North, Range 27 West, Cass County, Minnesota

A - 13

1864 Johnson and Thornton, U.S. Deputy Surveyors, originally established this corner position while running the line between Townships 139 and 140 North, Range 27 West. The following bearing trees were marked: a 10 inch Aspen North 32 degrees West a distance of 147 links; a 7 inch Jack Pine North 5 and 1/2 degrees East a distance of 209 links; an 8 inch Jack Pine South 10 degrees East a distance of 265 links; and a 12 inch Jack Pine South 86 degrees West a distance of 175 links.

1936 Civilian Conservation Corps notes Book 7 page 20 show they found a square stake in place.

1991 On April 4, a Landecker & Associates of Walker, Inc. survey crew found a 3 inch squared wood post as set by the Civilian Conservation Corps in 1936 up 30 inches in Cranberry bog next to rotted original survey wood post. All four original bearing trees positions fall on edge of swamp on high ground. No evidence remains of original bearing trees. On April 9, they set a 5 foot aluminum rod with 3 foot stabilizer and stamped aluminum cap between the found wood posts. New bearing trees were marked and an 8 foot steel sign post set as noted on front of this certificate.

NOTE: See subdivision map on Sheet 2 of 2 of STEVENS LAKE HOMESITES plat of record.