

# CERTIFICATE OF LOCATION OF GOVERNMENT CORNER

Northeast Corner of Section 31, Township 142, Range 31, 5th P.M.

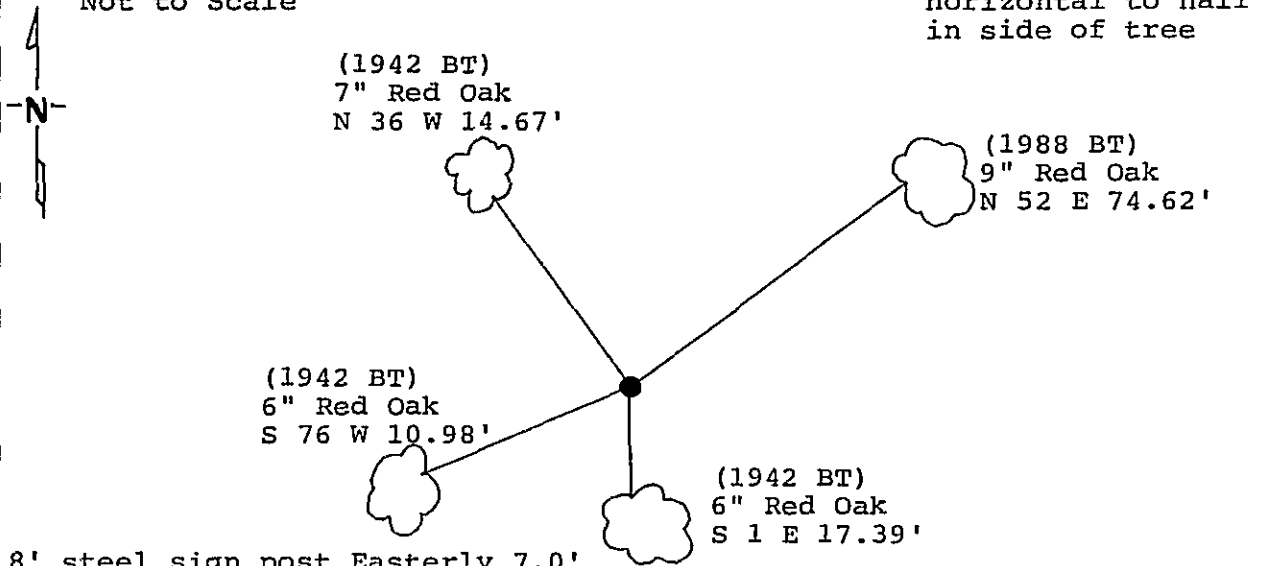
STATE OF MINNESOTA, County of Cass

At the corner location shown on the sketch:

- On 1/28/91 found a 2 inch capped iron pipe  
DATE
- left monument as found,  lowered monument,  removed monument (explain)
- On \_\_\_\_\_ placed a \_\_\_\_\_  
DATE

Magnetic Decl: 5° East SKETCH OF REFERENCE TIES  
 Not to Scale

All distances are horizontal to nail in side of tree



All trees are scribed, painted with red enamel and marked with a 54-3 (bearing tree) tag.

Monument Stamped  
 T142N R31W  
30 29  
31 32  
 1991  
 RLS 17008

Statement of evidence relative to this corner location is on back of page. 327276

I hereby certify that this document and the data contained herein was prepared by me or under my direct supervision.

Shirley A. Schuch 3/6/91  
SIGNATURE DATE

Registration No. 17008

- Land Surveyor,  Professional Engineer
- County Surveyor,  County Engineer

OFFICE OF THE REGISTER OF DEEDS  
 County of Cass

I hereby certify that this document was filed in the Reg. of Deeds office at 3:05 P. M. on the 11 day of March A.D., 19 91

Register of Deeds Claudia Kayler  
 By MS, Deputy

DOCUMENT NO. 327276

Northeast corner, Section 31, Township 142 North, Range 31 West, Cass County, Minnesota

V-5 142-31

1873 P.H. Conger, U.S. Deputy Surveyor, originally established this corner position while subdividing Township 142 North, Range 31 West. The notes indicate a wood post was set to mark the corner position and the following witnesses: an 8 inch Red Oak North 21 degrees East a distance of 15 links; a 3 inch Poplar North 65 degrees West a distance of 26 links; a 10 inch Poplar South 4 degrees West a distance of 37 links; and a 30 inch White Pine South 60 degrees East a distance of 20 links.

1911 County Surveyor's Record Book A, pages 388-389, shows survey by John Curo. The notes indicate a 2 inch by 48 inch iron monument was set using the old government bearing trees. The notes do not indicate that any bearing trees were marked.

1915 County resurvey in County Recorder's Office file cabinet E number 61 shows survey by John Curo. The notes indicate an iron monument was found.

1915 County Surveyor's Record Book C, page 516, shows survey by Scott Miller. The notes indicate an iron monument was found. The notes do not indicate that any bearing trees were marked.

1916 County Surveyor's Record Book C, page 115, shows survey by F.F. Wilson. The notes indicate an iron monument was found. The notes do not indicate that any bearing trees were marked.

1919 County resurvey in County Recorder's Office file cabinet E number 62 shows survey by E.B. Horst. The notes indicate an iron monument was found.

1919 County Surveyor's Record Book C, page 516, shows survey by E.B. Horst. The notes indicate an iron monument was found. The notes do not indicate that any bearing trees were marked.

1925 County resurvey in County Recorder's Office file cabinet E number 62 shows survey by John Greene. The notes indicate an iron monument was found.

1942 County Surveyor's Record Book D, pages 294-295, shows survey by John Curo. The following bearing trees were marked: a 6 inch Oak North 29 degrees East a distance of 10.70 feet; a 3 inch Oak South 30 degrees East a distance of 17.40 feet; a 4 inch Oak South 65 degrees 30 minutes West a distance of 11.20 feet; and a 5 inch Oak North 40 degrees 30 minutes West a distance of 14.40 feet.

1988 United States Forest Service personnel found a 2 inch capped iron pipe while traversing around Section 29. They also found the Northwest, Southwest and Southeast 1942 bearing trees. They marked one new bearing tree: a 9 inch Red Oak North 52 degrees East a distance of 74.62 feet.

1991 on January 28, a Landecker & Associates, Inc. survey crew found the 2 inch capped iron pipe up 16 inches. The three 1942 bearing trees and the 1988 USFS bearing tree are in good shape. Stamp capped monument. Sign posts were in place as noted on front of the certificate. Landecker and Associates, Inc. accepts the found capped iron pipe as a perpetuation of the original corner.