

CERTIFICATE OF LOCATION OF GOVERNMENT CORNER

W 1/16 Corner of Section 28-33, Township 143, Range 25, 5th P.M.

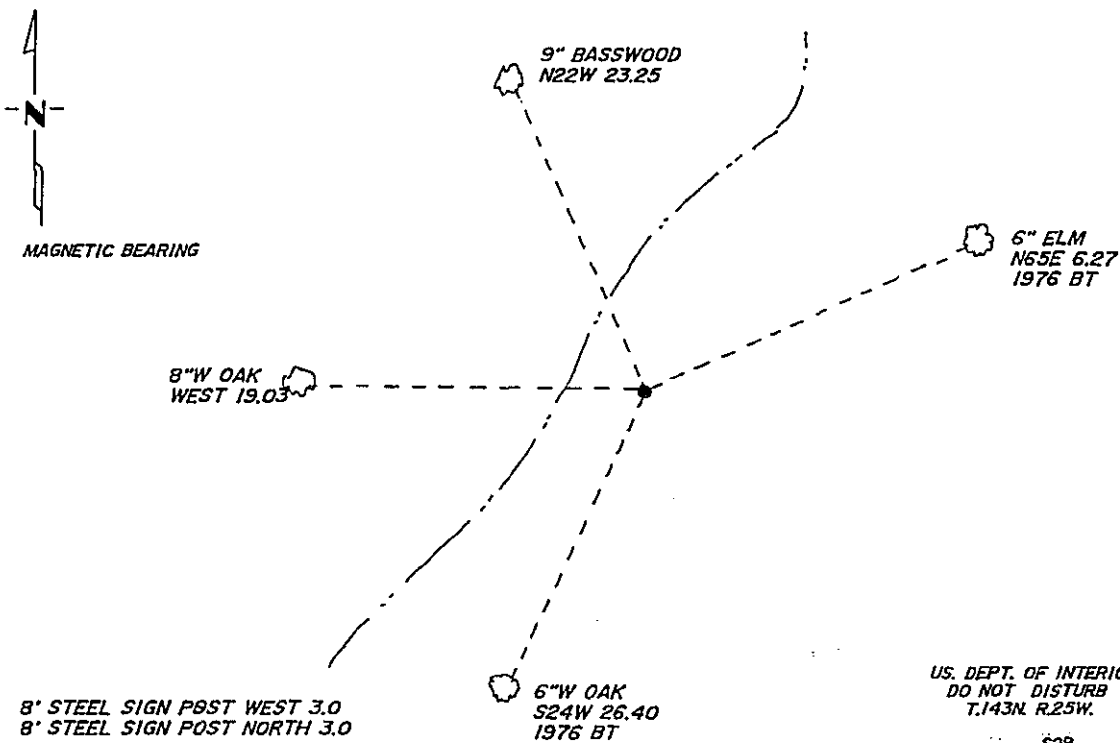
STATE OF MINNESOTA, County of CASS

At the corner location shown on the sketch:

- On 1990 found a 2 1/2" x 28" ALUM. BLM MONUMENT 10" ABOVE GROUND.
DATE
- left monument as found, lowered monument, removed monument (explain)
- On _____ placed a _____
DATE

NOT TO SCALE

SKETCH OF REFERENCE TIES



U.S. DEPT. OF INTERIOR
DO NOT DISTURB
T.143N. R.25W.

528
W 1/16 S33
1976

CADASTRAL SURVEY
BUR. OF LAND MANAGEMENT

8" STEEL SIGN POST WEST 3.0
8" STEEL SIGN POST NORTH 3.0

NOTE: ALL BT'S ARE BLAZED, SCRIBED AND PAINTED WITH RED ENAMEL PAINT WITH BT SIGNS, AND ALL MEASUREMENTS ARE HORIZONTAL TO SPIKE IN SIDE OF TREE

Statement of evidence relative to this corner location is on back of page. 326342

I hereby certify that this document and the data contained herein was prepared by me or under my direct supervision.

Walter P. Law 1-22-91
SIGNATURE DATE

Registration No. 11795

Land Surveyor
 County Surveyor

OFFICE OF THE COUNTY RECORDER
County of Cass

I hereby certify that this document was filed in the Co. Recorders office at 9:35 A.M. on the 25 day of January A.D., 1991

County Recorder Claudia Koyler
By Ms, Deputy

DOCUMENT NO. 326342

Statement of Evidence:

V-10 W 1/16 Corner to Sec. 28-33, T.143N., R.25W.

1976 B.L.M. made a dependent resurvey of part of the township set a 2 1/2" aluminum monument with aluminum cap at the proportionate position between the SW Corner and the S 1/4 corner of section 28 and marked bearing trees as follows:

6" Elm	N65E	9.51ks.
6" Oak	S42W	401ks

1989 USFS used this corner as part of a traverse around Section 28

1990 Walt Curo accepts the B.L.M. monument for this corner as the position was monumented and accepted by B.L.M. as the true position for this corner.