

CERTIFICATE OF LOCATION OF GOVERNMENT CORNER

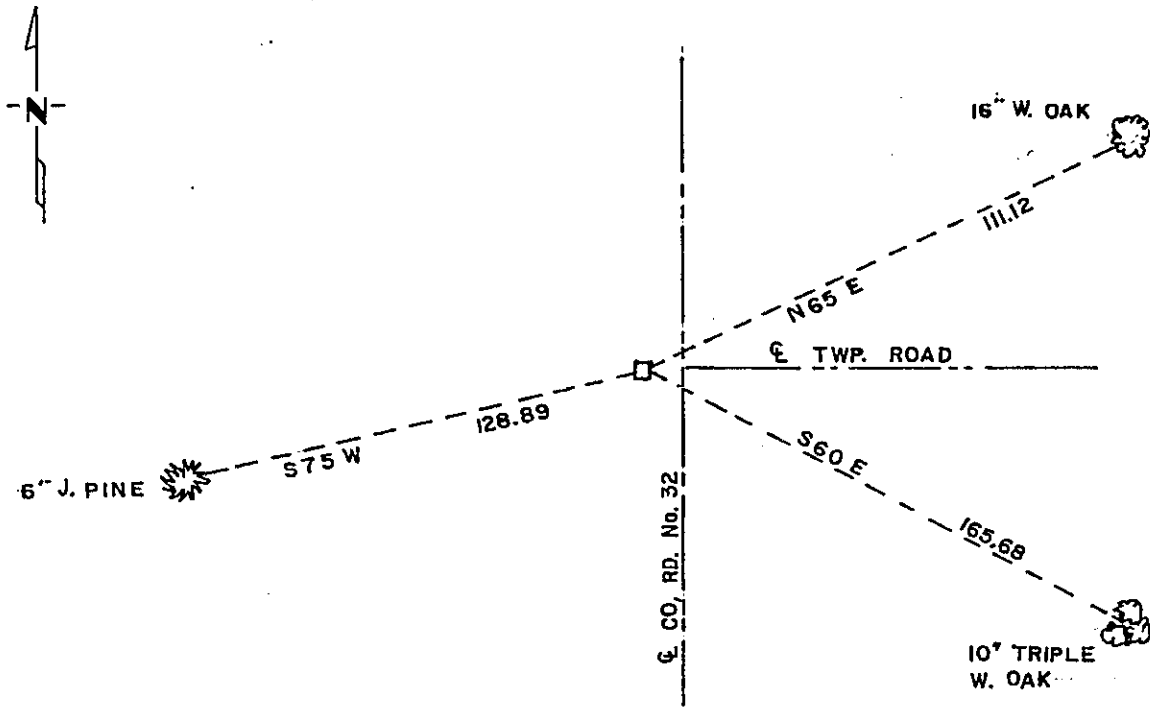
NORTH QUARTER Corner of Section 33, Township 134, Range 32, 5th P.M.

STATE OF MINNESOTA, County of CASS

At the corner location shown on the sketch:

- On 1988 found a 1" IRON MONUMENT, WHICH WAS DESTROYED IN ROAD CONSTRUCTION
 left monument as found, lowered monument, removed monument (explain)
- On 8-31-90 placed a 2" x 2" x 6" TELESAR MONUMENT WITH ALUM. CAP FLUSH WITH BLACK TOP

NOT TO SCALE SKETCH OF REFERENCE TIES



DIST. TO NAIL IN SIDE OF TREE

Statement of evidence relative to this corner location is on back of page. 325734

I hereby certify that this document and the data contained herein was prepared by me or under my direct supervision.

Walt E. Carr 12-20-90
SIGNATURE DATE

Registration No. 11395

- Land Surveyor
- County Surveyor

OFFICE OF THE COUNTY RECORDER
County of Cass

I hereby certify that this document was filed in the Co. Recorders office at 2:15 P. .M. on the 21 day of December A.D., 19 90

County Recorder Claudia Kogler
By MLS, Deputy

DOCUMENT NO. 325734

Statement of Evidence:

V 11, N $\frac{1}{4}$ corner of Sec. 33, Twp. 134, Rge. 32

1870: Original survey set a wood post and marked BT's as follows:

B. Pine 8" S 12 W 13 lks.

B. Pine 9" N 43 E 16 lks.

1988: Cass County Highway dept. survey crew found a 1" iron pipe of unknown origin 3' west of the centerline of County Road No. 32, and in line with centerline of the twp. road to the east. No original evidence remains. This monument destroyed in new road construction.

1990: Walt Curo and Cass County Hwy. Dept. survey crew reset this corner with a 2" x 2" x 6" telespar monument with aluminum cap flush with blacktop. I accept this position as monumented by others as the best evidence of the location for this corner. Mark new BT's as shown on front.