

CERTIFICATE OF LOCATION OF GOVERNMENT CORNER

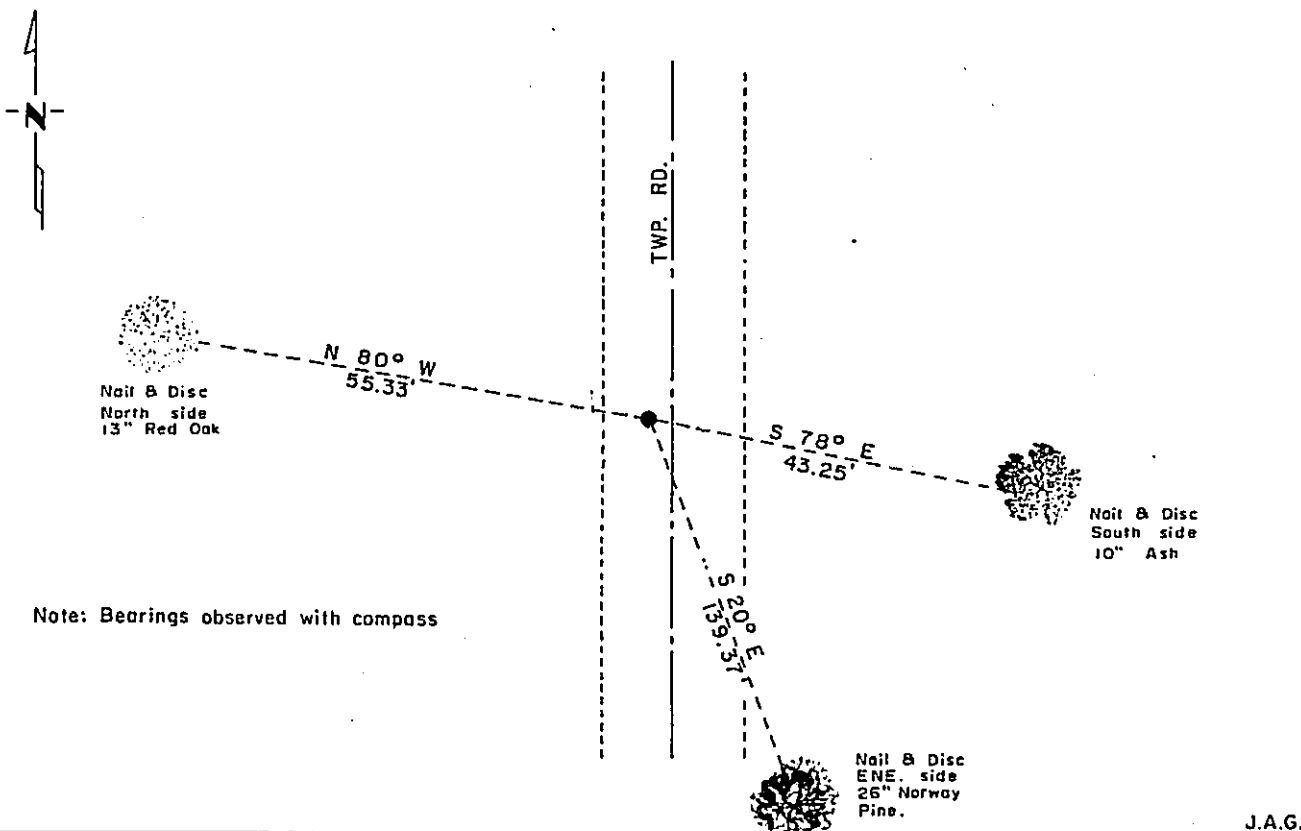
NORTHEAST Corner of Section 24, Township 140, Range 30, 5th P.M.

STATE OF MINNESOTA, County of CASS

At the corner location shown on the sketch:

- On 8-25-81 found a 3/4" x 18" Iron Pipe (down 0.3') 2.5' ± West of ℄ N-S gravel road
- left monument as found, lowered monument, removed monument (explain)
- On _____ placed a _____

SKETCH OF REFERENCE TIES



Statement of evidence relative to this corner location is on back of page. FILE: A-338

I hereby certify that this document and the data contained herein was prepared by me or under my direct supervision.

John D. Walker 11-8-90
SIGNATURE DATE
 Registration No. 16098

- Land Surveyor, Professional Engineer
- County Surveyor, County Engineer

OFFICE OF THE REGISTER OF DEEDS
 County of Cass

I hereby certify that this document was filed in the Reg. of Deeds office at 2:20 P. .M. on the 14 day of November A.D. 18 90
 Register of Deeds Claudine Kayler

By M.S., Deputy

DOCUMENT NO. 324964

Northeast corner Section 24, Township 140 North, Range 30 West

The following offices were contacted for information on this corner:
Minnesota Secretary of State
Cass County Recorder
Cass County Surveyor

- 1865 The US General Land Office field notes state that they set a post and measured to four bearing trees.
- 1919 In Book C, page 203, survey number 423, in May 1919, E.B. Horst indicates a 2"x48" iron monument at the corner. No further description or procedures are available.
- 1965 R.F. Schneider conducted a survey under contract for the DNR in the area. Schneider states an iron pipe for the corner at that time and ties were measured to the corner. Schneider gives a distance of 2564.2' to meander corner #1 in place on the south shore of Webb Lake.
- 1981 On August 25, the DNR searched for and found a 3/4" inside diameter iron pipe in place. The 3/4" iron pipe was pulled and a magnetic locator was used to search for additional monumentation but nothing else was found. Replaced the iron pipe and accepted it as the corner. Measured distance north to Meander Corner #1 proved to be 2563.89' which fits well with Schneiders 1965 distance.