

CERTIFICATE OF LOCATION OF GOVERNMENT CORNER

East Quarter Corner of Section 15, Township 143N, Range 26W, 5th P.M.

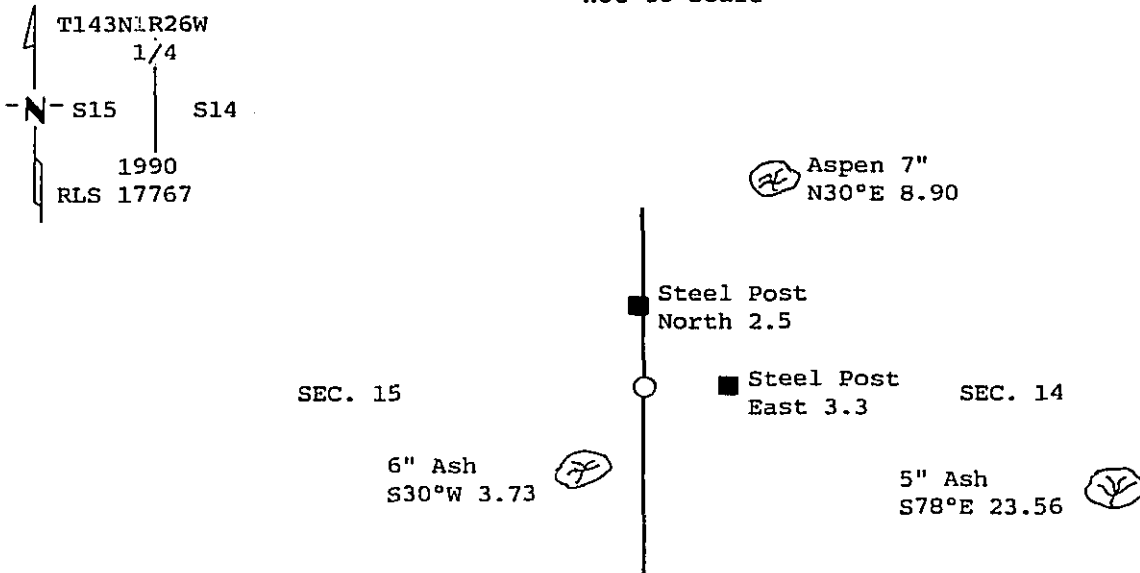
STATE OF MINNESOTA, County of Cass

At the corner location shown on the sketch:

- On _____ found a _____
DATE
- left monument as found, lowered monument, removed monument (explain)
- On 5-11-1990 placed a 2" X 54" brass capped monument on an 8' fence post.
DATE

Monument Marked

SKETCH OF REFERENCE TIES
not to scale



bearings are true

All trees are scribed, painted with a 30d spike in side and USFS 54-3 tag.

Statement of evidence relative to this corner location is on back of page.

323158

I hereby certify that this survey, plan or report was prepared by me or under my direct supervision and that I am a duly Registered Land Surveyor under the laws of the State of Minnesota.

William C. Darpas

Date 8/22/90 Registration No. 17767

OFFICE OF THE COUNTY RECORDER

County of Cass

I hereby certify that this document was filed in the Co. Recorders office at 3:17 P. M. on the 28 day of August A.D., 19 90

County Recorder Clairine Kayler

By Ms, Deputy

DOCUMENT NO. 323158

Statement of Evidence:

L17 East quarter corner section 15

1/4 Cor. 14 and 15 (E 1/4 Cor. Sec. 15)

- 1872 U.S. General Land Office survey set wood post for corner and the following references were noted:
Spruce 8" N 40 degrees W, 25 Links (16.50 feet)
Spruce 6" N 35 degrees E, 21 Links (13.86 feet)
- 1969 Curt Krause, USFS, chained to search area from the north, no evidence of corner, or BT's found.
- 11-8-1989 Personnel from Kovanen & Osufsen Inc. chain to search area from north, no evidence of corner found.
- 5-11-1990 Personnel from Kovanen & Osufsen Inc. made an additional search of area and set a 2" x 54" brass capped monument on an 8' fence post in low wet area, by single proportion measurement and on line, between the reestablished Northeast corner of Section 15 and the reestablished Southeast corner of Section 15, then witnessed as follows:
Ash 6" S 30 degrees W, 3.73 feet
Aspen 7" N 30 degrees E, 8.90 feet
Ash 5" S 78 degrees E, 23.56 feet
Set 8' steel sign post with sign attached, East 3.3 feet
Set 8' steel sign post with sign attached, North 2.5 feet

This position is not traceable to the original GLO corner, but accepted as corner for lack of further evidence.