

# CERTIFICATE OF LOCATION OF GOVERNMENT CORNER

NORTH QUARTER Corner of Section 2, Township 133 N, Range 30 W, 5<sup>th</sup> P.M.

STATE OF MINNESOTA, County of CASS

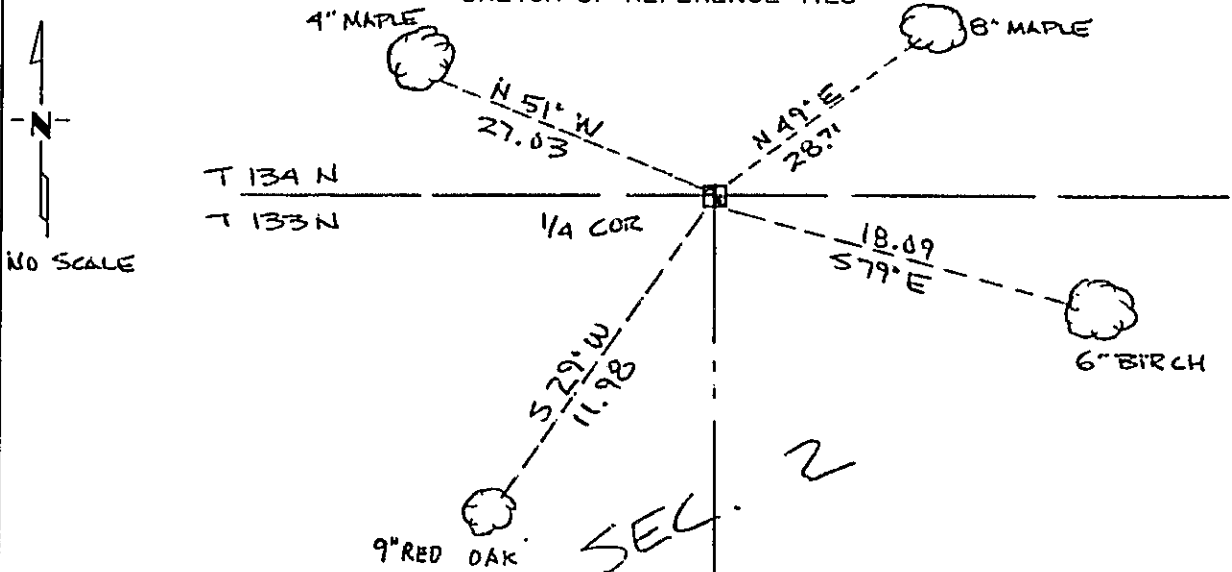
At the corner location shown on the sketch:

On \_\_\_\_\_ found a \_\_\_\_\_  
DATE

left monument as found,  lowered monument,  removed monument (explain)

On MAY 6, 1990 placed a 2 3/4" ALUMINUM CAP ON 2"x2"x 36" SIGN POST  
DATE  
MATERIAL (STANDARD COUNTY ISSUE) CAP STAMPED ACCORDINGLY.

SKETCH OF REFERENCE TIES



NOTE: BEARINGS TO TREES ARE TRUE.  
TREES ARE MARKED WITH BLAZE AND B.T.  
TAGS. DISTANCES ARE TO DUPLEX NAIL  
ON SIDE OF TREE. SIGN POST SET  
1.00 NORTH OF MONUMENT.

Statement of evidence relative to this corner location is on back of page. 320872

I hereby certify that this document and the data contained herein was prepared by me or under my direct supervision.

Jeffrey H. Burt SIGNATURE 5/14/1990 DATE

Registration No. 19095

- Land Surveyor
- County Surveyor

OFFICE OF THE COUNTY RECORDER  
County of Cass

I hereby certify that this document was filed in the Co. Recorders office at 4:15 P. M. on the 30 day of May A.D., 19 90

County Recorder Claudine Kayler

By ms, Deputy

DOCUMENT NO. 320872

Statement of Evidence:

A-19

IN 1858 THE ORIGINAL GOV'T SURVEY SET A WOOD POST TO MARK THE CORNER.

IN FEB. 1990 JEFFREY K. BRETT RLS# 19095 TRAVERSE INTO THE RECORD POSITION AND SEARCHED FOR CORNER. FOUND OLD STRING OF BARBED WIRE FENCE ~~RUNNING~~, BURIED 0.2, RUNNING EAST - WEST APPROX. 12 FEET SOUTH OF CALC POSITION.

MAY 6, 1990 JEFFREY K. BRETT RLS# 19095 DETERMINES CORNER IS LOST. STANDARD COUNTY MONUMENT IS SET BY SINGLE PROPORTIONATE MEASURE USING THE EXISTING CORNERS FOR NW OF SECTION 3 AND THE NE OF SECTION 2. AS THIS IS THE TOWNSHIP LINE, THE CORNER WAS PLACED ON THE TRUE LINE OF ARC.