

# CERTIFICATE OF LOCATION OF GOVERNMENT CORNER

Northeast Corner of Section 34, Township 140N., Range 31W., 5th P.M.

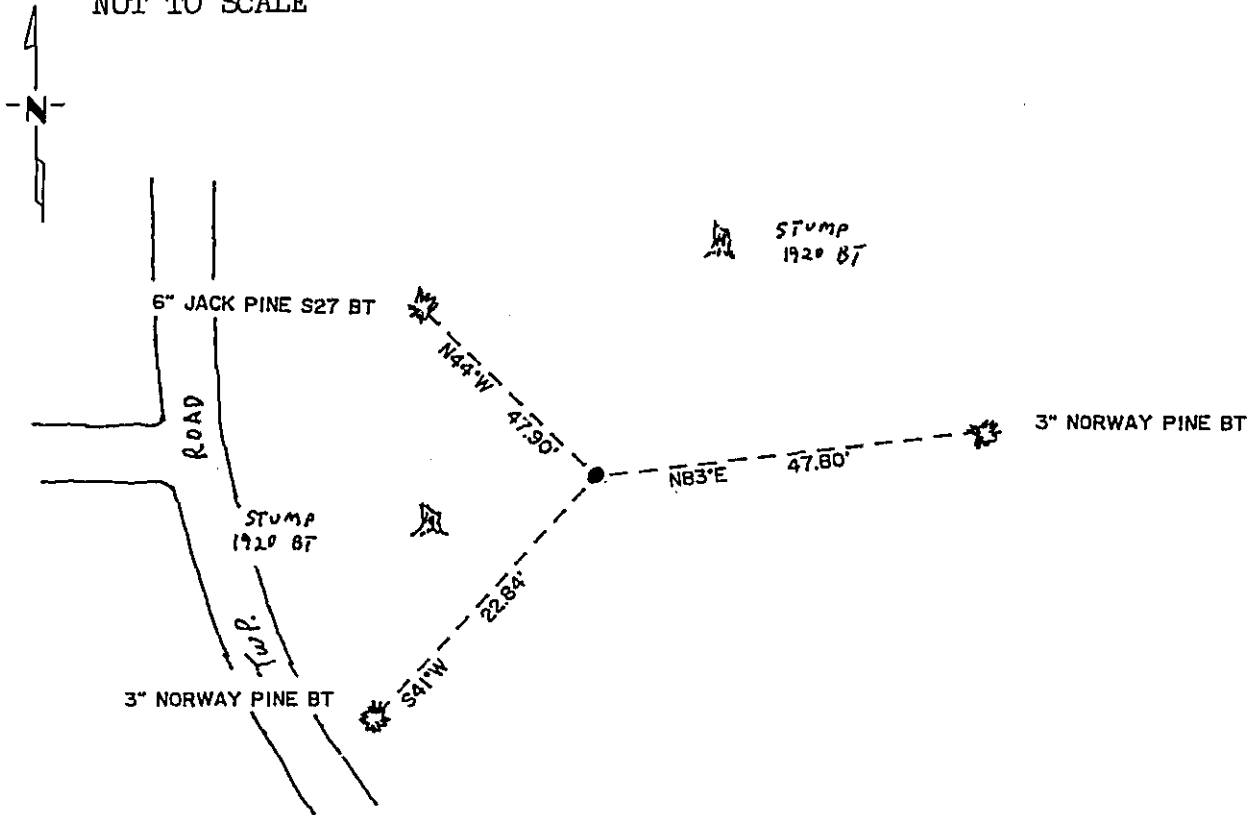
STATE OF MINNESOTA, County of Cass

At the corner location shown on the sketch:

- On 10/6/87. found a 2" capped I.P. and remains of all four 1920 B.T."s
  - left monument as found,  lowered monument,  removed monument (explain)
- On \_\_\_\_\_ placed a \_\_\_\_\_

### SKETCH OF REFERENCE TIES

NOT TO SCALE



Statement of evidence relative to this corner location is on back of page.

I hereby certify that this document and the data contained herein was prepared by me or under my direct supervision.

Walter E. Claus 4-18-90  
SIGNATURE DATE

Registration No. 11395

- Land Surveyor
- County Surveyor

319821  
OFFICE OF THE COUNTY RECORDER  
County of Cass

I hereby certify that this document was filed in the Co. Recorders office at 10:35 A. .M. on the 23rd day of April A.D., 1990

County Recorder Claudine Kaylor  
By DJK, Deputy

DOCUMENT NO. 319821

Statement of Evidence:

V 17

Northeast Corner Section 34, T.140N., R.31W., 5th P.M.

- 1870 U.S. General Land Office Survey set a wood post for this corner and marked the following bearing trees: 8" S.P. Pine S76½E 18 lks., 12" S.P. Pine N46E 25 lks., 14" Sp. Pine N77"2W 19 lks.
- 1920 County Surveyor, E.B. Horst's notes, Curo notes Book 166, page 23, show he found stamps of Northwest and Southeast Government B.T.'s, set 2½" x 30" I.M., and marked four new B.T.'s: 6" Jack Pine N31-00E 77.2', 6" Jack Pine N28-30W 14', 5" Jack Pine S82-30W 11', 6" Jack Pine S77-00E 10.6'.
- 1983 County Survey Technician Terry Freeman and County Forester Larry Olson found 2" I.P. with cap and Southwest and Southeast 1920 B.T.'s still living. Temporary ties: 12" Jack Pine S27E 21.91'tag, 12" Aspen N47E 21.07'.
- 1987 On October 6, Terry Freeman and Dan Marcum, County Forrester, find I.P.'s still in good condition, Southwest 1920 B.T. cut off and 1983 temporary tie Southeast cut off. Also find stump of 1920 B.T. Northeast and stump hole and piece of pine wood with axe marks at bearing and distance to 1920 Northwest B.T.  
Marked three new B.T.'s: Norway Pine N83E 47.80' scribed "B.T.", 3" Norway Pine S41W 22.84 scribed "BT", 6" Jack Pine N44W 47.90' scribed "S27 BT". Set 7' steel sign post and survey monument sign 1' west.