

CERTIFICATE OF LOCATION OF GOVERNMENT CORNER

Northeast Corner of Section 32, Township 143N, Range 26W, 5th P.M.

STATE OF MINNESOTA, County of Cass

At the corner location shown on the sketch:

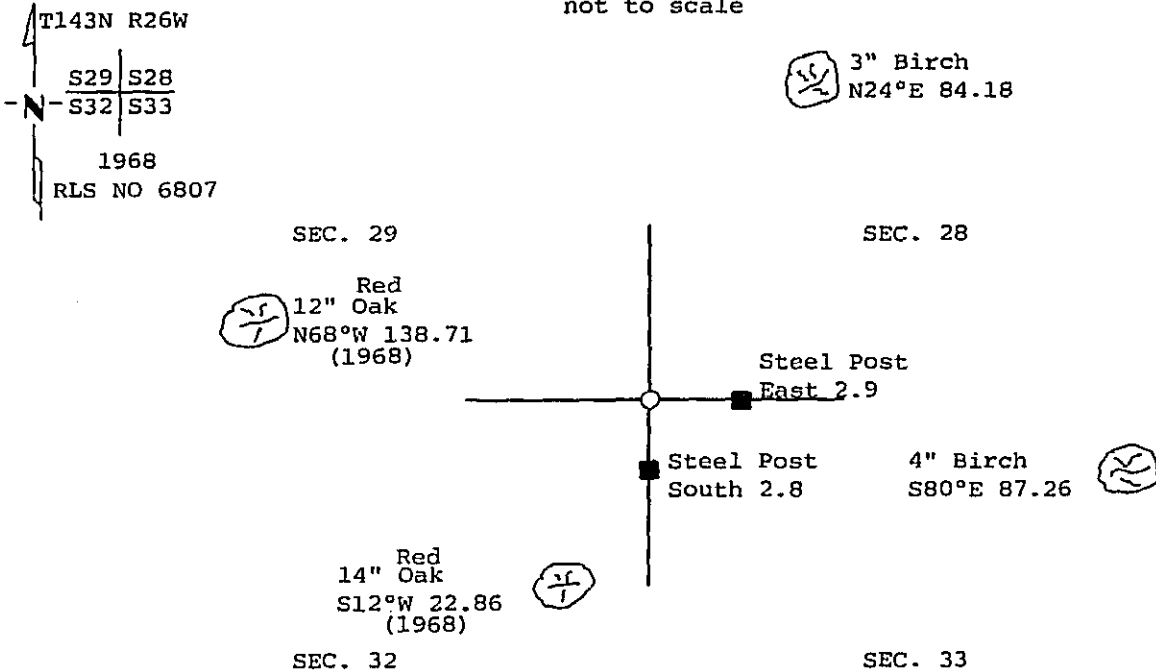
On 1-17-1990 found a 6" X 5' concrete cylinder with a 3" bronze tablet.
DATE

left monument as found, lowered monument, removed monument (explain)

On _____ placed a _____
DATE

Monument Marked

SKETCH OF REFERENCE TIES
not to scale



bearings are true All trees are scribed, painted with a 30d spike in side and USFS 54-3 tag.

Statement of evidence relative to this corner location is on back of page. 319620

I hereby certify that this survey, plan or report was prepared by me or under my direct supervision and that I am a duly Registered Land Surveyor under the laws of the State of Minnesota.

William C. Osborn

Date 3/20/90 Registration No. 17767

OFFICE OF THE COUNTY RECORDER
County of Cass

I hereby certify that this document was filed in the Co. Recorders office at 10:30 A.M. on the 12 day of April A.D., 19 90

County Recorder Claudine Kayler
By MS, Deputy

DOCUMENT NO. 319620

Statement of Evidence:

V9 Northeast corner section 32

Cor. 28,29,32 and 33 (NE Cor. Sec. 32)

- 1872 U.S. General Land Office survey set wood post for corner and the following references were noted:
Fir 5" N 18 degrees E, 20 Links (13.20 feet)
Birch 5" N 51 degrees W, 15 Links (9.90 feet)
White Pine 26" S 50 degrees W, 20 Links (13.20 feet)
Birch 7" S 44 degrees E, 40 Links (26.40 feet)
- 1916 E.B. Horst, for J. Curo, Cass County field Book #68, Page 28 found post and Birch BT plainly marked, he set iron monument.
- 1918 J.H. Flynn, Cass County field Book C, Page 151, found monument set by Horst and witnessed as follows:
Black Oak 14" N 45 degrees 30 minutes E, 35.5 feet
Basswood 14" N 11 degrees 15 minutes E, 64.5 feet
- 1968 U.S.F.S. found iron monument, no BT's, they set 6"x 5' concrete cylinder with 3" bronze tablet and witnessed as follows:
Red Oak 9" N 70 degrees W, 138.74 feet
Red Oak 9" S 12 degrees W, 23.0 feet
White Oak 8" N 35 degrees E, 224.63 feet
REA Pole 9" S 41 degrees W, 52.05 feet
Cedar post 4"x4" with sign attached, South 3.8 feet
An affidavit as to location of Government corner was filed for record in the Cass County Recorders Office from the above information by William H. Okerman, RLS, on June 3, 1970.
- 1969 Cass County Highway Department County Road #65 map lists found monument.
- 10-3-1985 G. Kosenko, U.S.F.S., found monument and measured to witnesses;
Red Oak 13" N 68 degrees W, 138.71 feet
Red Oak 14" S 12 degrees W, 22.86 feet
White Oak 11" N 37 degrees E, 224.68 feet
REA Pole 9" S 39 degrees W, 51.94 feet
they add the following:
Steel sign post with sign attached, South 3.0 feet
Steel sign post with sign attached, East 3.0 feet
- 1-16-1990 Personnel from Kovanen & Osufsen Inc. found monument in good condition and BT's as follow:
Red Oak 12" N 68 degrees W, 138.71 feet
Red Oak 14" S 12 degrees W, 22.86 feet
Birch 3" N 24 degrees E, 84.18 feet
Birch 4" S 80 degrees E, 87.26 feet
Steel sign post with sign attached, South 2.8 feet
Steel sign post with sign attached, East 2.9 feet

This position is traceable to the original GLO corner.