

CERTIFICATE OF LOCATION OF GOVERNMENT CORNER

East Quarter Corner of Section 31, Township 134N., Range 31W., 5th P.M.

STATE OF MINNESOTA, County of Cass

At the corner location shown on the sketch:

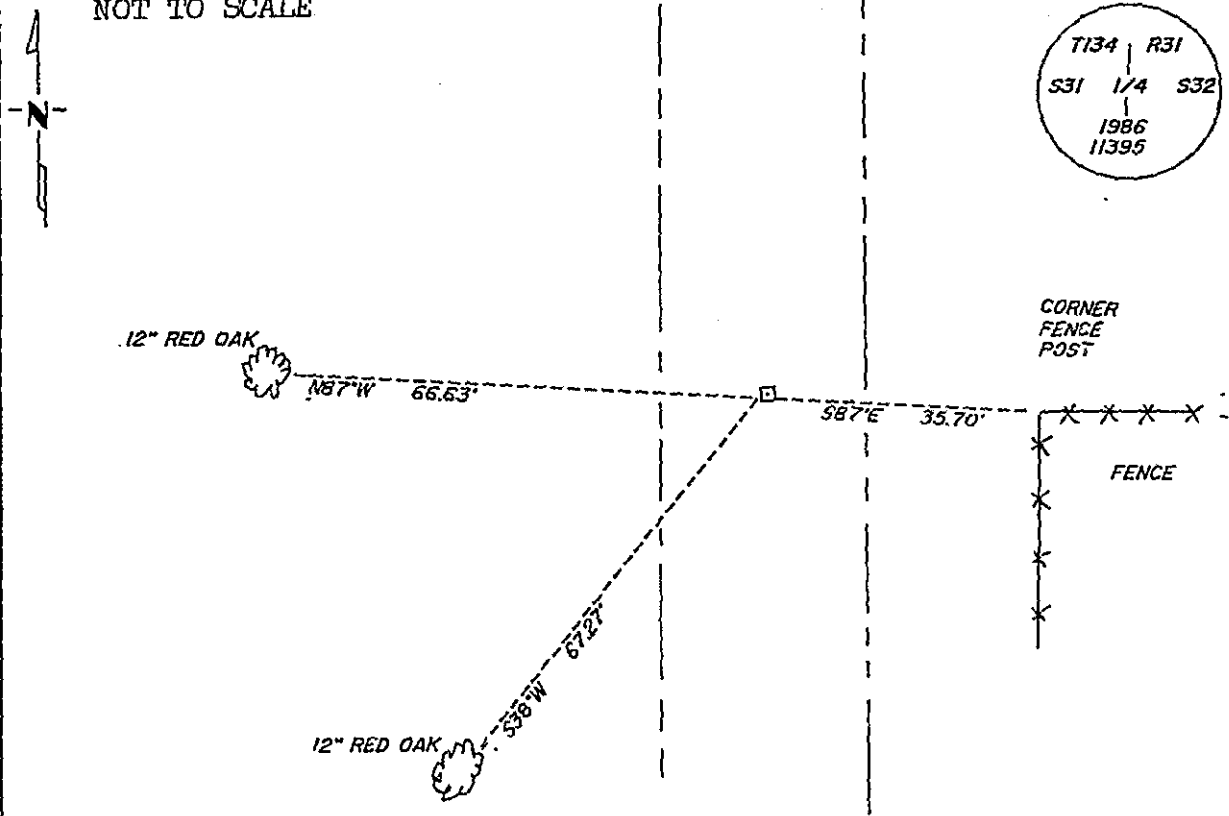
On _____ found a _____
DATE

left monument as found, lowered monument, removed monument (explain)

On 1986 placed a 2" x 18" telespar monument with a stamped
DATE aluminum cap down 8" in centerline of north to south road.

SKETCH OF REFERENCE TIES

NOT TO SCALE



Statement of evidence relative to this corner location is on back of page. 319107

I hereby certify that this document and the data contained herein was prepared by me or under my direct supervision.

Walter E. Brown 3-15-90
SIGNATURE DATE

Registration No. 11395

Land Surveyor

County Surveyor

OFFICE OF THE COUNTY RECORDER

County of Cass

I hereby certify that this document was filed in the Co. Recorders office at 4:18 P. M. on the 19 day of March A.D., 19 90

County Recorder Cherline Kayler

By ms, Deputy

DOCUMENT NO. 319107

Statement of Evidence:

X-5

East Quarter Corner, Section 31, T.134N., R.31W., 5th P.M.

- 1869 U.S. General Land Office survey set a wood post for this corner and marked the following bearing trees: a 4" Aspen N60E 15 links and a 5" Aspen west 17 lks.
- 1985 On November 7, Terry Freeman of the Cass County Surveyors Office and backhoe operator Glen Williams dug in the area of the road going north to south and a fence to the east. They dug 12' north to south by 12' east to west by 2½' deep. They found a ½' of sand top, 1' of fill and dug 1' into natural sandy clay.
- 1986 Terry Freeman placed a 2"x 18" telespar monument with a stamped aluminum cap down 8" in the centerline of road going north to south.