

CERTIFICATE OF LOCATION OF GOVERNMENT CORNER

North Quarter _____ Corner of Section 32, Township 134N, Range 31W, 5th P.M.

STATE OF MINNESOTA, County of Cass

At the corner location shown on the sketch:

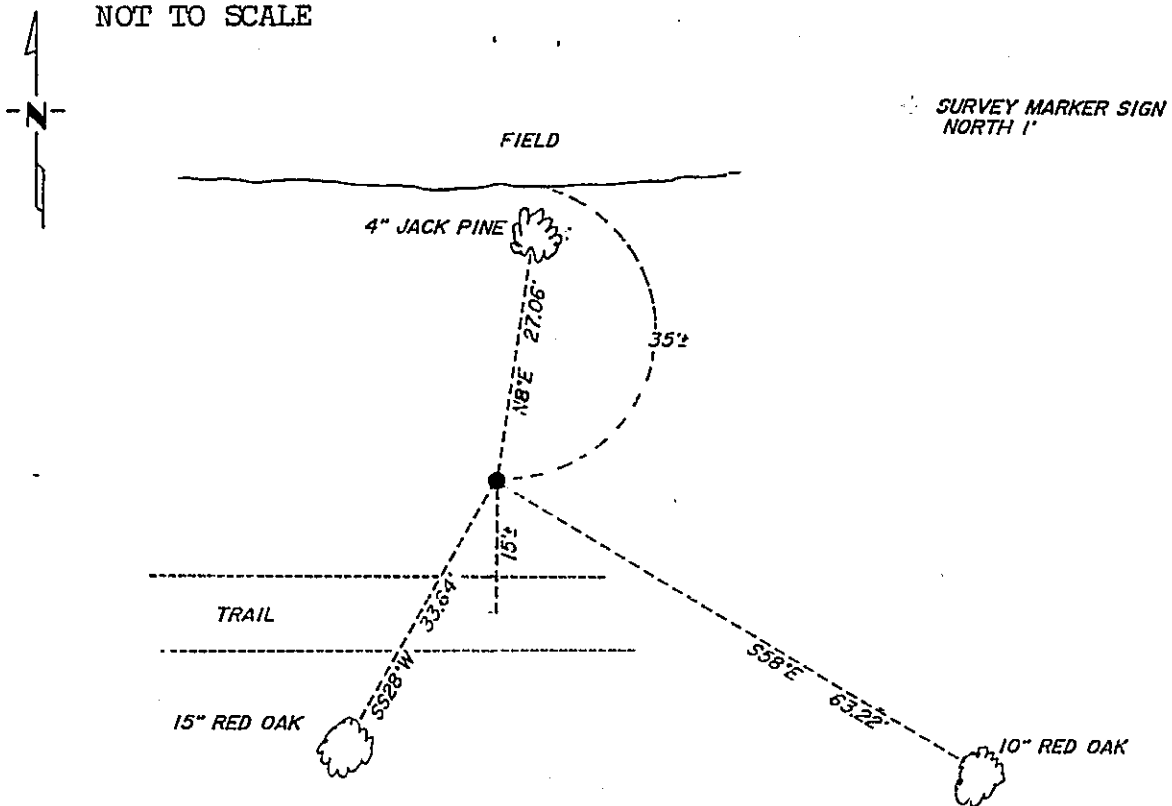
On 11/7/85 found a 2" capped iron pipe up 6"
DATE

left monument as found, lowered monument, removed monument (explain)

On _____ placed a _____
DATE

SKETCH OF REFERENCE TIES

NOT TO SCALE



Statement of evidence relative to this corner location is on back of page.

319104

I hereby certify that this document and the data contained herein was prepared by me or under my direct supervision.

Walter E. Larson 3-15-90
SIGNATURE DATE

Registration No. 11395

- Land Surveyor
- County Surveyor

OFFICE OF THE COUNTY RECORDER

County of Cass

I hereby certify that this document was filed in the Co. Recorders office at 4:15 P. .M. on the 19 day of March A.D., 19 90

County Recorder Clondise Kaylor

By (Ms) Deputy

DOCUMENT NO. 319104

Statement of Evidence:

V-7

North Quarter Corner, Section 32, T.134N., R.31W., 5th P.M.

- 1869 U.S. General Land Office survey set a wood post for this corner and marked the following bearing trees: a 7" Oak N22E 32 links and a 6" Oak S47E 9 links.
- 1915 County Survey Record Book "B", pages 484-495, show a survey by N.D. Gorman. He set the corner proportionally.
- 1985 On October 30, Cass County Survey Technician Terry Freeman found a 2" capped iron pipe.
- 1986 On October 28, Terry Freeman and Norman Morris marked bearing trees as shown on the front of this certificate.