

CERTIFICATE OF LOCATION OF GOVERNMENT CORNER

North Quarter Corner of Section 22, Township 134 N., Range 31 W., 5th P.M.

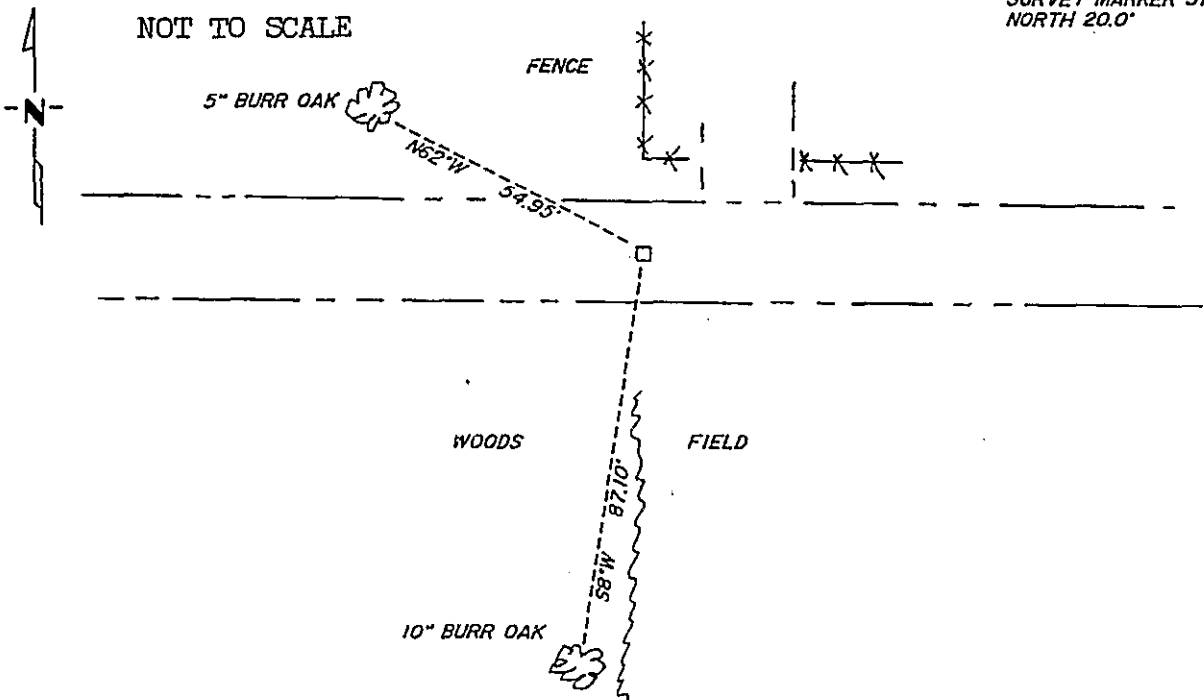
STATE OF MINNESOTA, County of Cass

At the corner location shown on the sketch:

- On _____ found a _____
DATE
- left monument as found, lowered monument, removed monument (explain)
- On 9/24/86 placed a 2" x 18" telespar monument down 6" in
DATE
East to West Centerline in line with fence N and field line S.

SKETCH OF REFERENCE TIES

SURVEY MARKER SIGN
NORTH 20.0°



Statement of evidence relative to this corner location is on back of page. 318883

I hereby certify that this document and the data contained herein was prepared by me or under my direct supervision.

Walter S. Olson 2-28-90
SIGNATURE DATE

Registration No. 11395

- Land Surveyor
- County Surveyor

OFFICE OF THE COUNTY RECORDER

County of Cass

I hereby certify that this document was filed in the Co. Recorders office at 3:50 P. M. on the 6 day of March A.D., 19 90

County Recorder Clondine Kayler

By ms, Deputy

DOCUMENT NO. 318883

Statement of Evidence:

N-15

North Quarter Corner, Section 22, T. 134 N., R. 31 W., 5th P.M.

1869 U. S. General Land Office survey set a wood post for this corner, and marked the following bearing trees: 10" Spruce, S 20 E, 25 Lks, 8" Spruce N. 38 E, 35 Lks.

1986 On May 16, Terry Freeman, Cass County Survey Technician, and Glen Williams, backhoe operator, dug in the area of East to West road and fences North and south. Dug 9', North to South by 12' East to West by 1.25' deep. Slight cut in road. 3" top, dug 1' into sandy clay natural ground.

1986 On September 24, Terry Freeman placed a 2"x 18" telespar monument down 6" in the centerline of the road going east to west in line with the fence to the north and the field line to the south.