

CERTIFICATE OF LOCATION OF GOVERNMENT CORNER

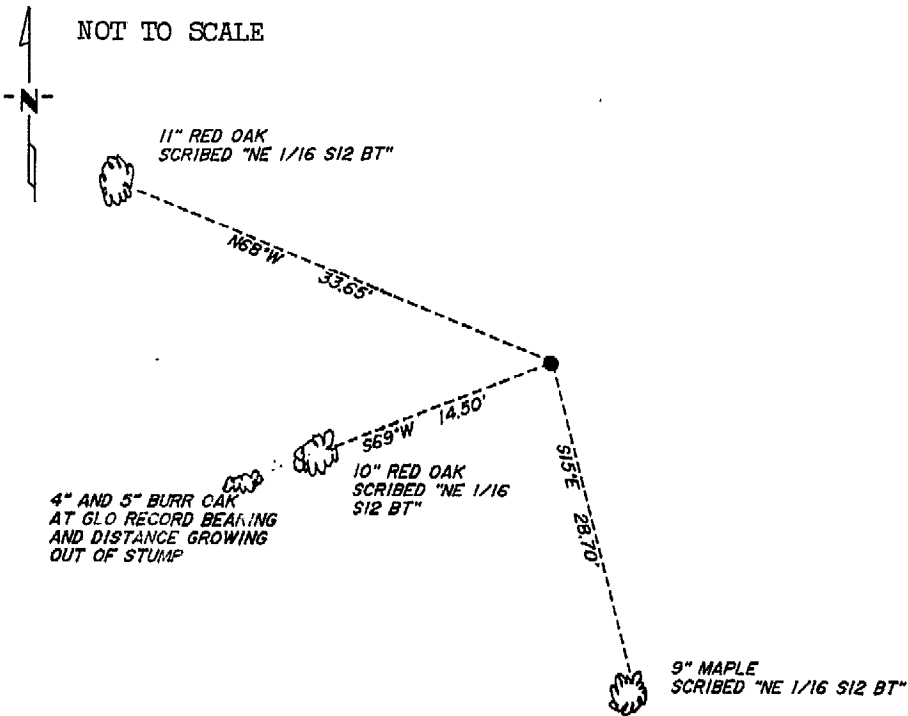
Northeast 1/16th Corner of Section 12, Township 141N, Range 29W, 5th P.M.

STATE OF MINNESOTA, County of Cass

At the corner location shown on the sketch:

- On 7/27/87 found a 1" GLO brass cap monument
DATE
- left monument as found, lowered monument, removed monument (explain)
- On _____ placed a _____
DATE

SKETCH OF REFERENCE TIES



Statement of evidence relative to this corner location is on back of page. 317973

I hereby certify that this document and the data contained herein was prepared by me or under my direct supervision.

Walter E. Linn 1-22-90
SIGNATURE DATE

Registration No. 11395
 Land Surveyor
 County Surveyor

OFFICE OF THE COUNTY RECORDER
 County of Cass

I hereby certify that this document was filed in the Co. Recorders office at 2:55 P.M. on the 22 day of January A.D., 19 90

County Recorder Clairine Kayler
 By M.S., Deputy
 DOCUMENT NO. 317973

Statement of Evidence:

F-24

Northeast One-sixteenth Corner, Section 12, T.141N., R.29W., 5th PM

- 1918 U.S. General Land Office dependent resurvey set a 1"x 36" iron pipe with a marked brass cap for this corner and marked the following bearings: 8" Poplar N82½E 33 links and a 4" White Oak S68E 30 links.
- 1987 On July 27, Terry Freeman of the Cass County Surveyor's office and Curt Krause of the U.S. Forestry Service found monument in good condition. Cass County had previously chained into the corner from the east and to the north. The distances check well. The corner is at the northeast corner of the slope to the south and west, near the top of the ridge. Three large rocks were piled around the monument. Three new bearings were marked as shown on the front of this certificate.